

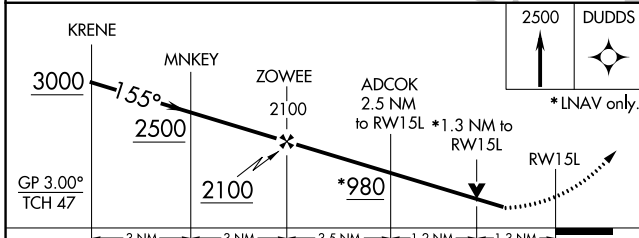
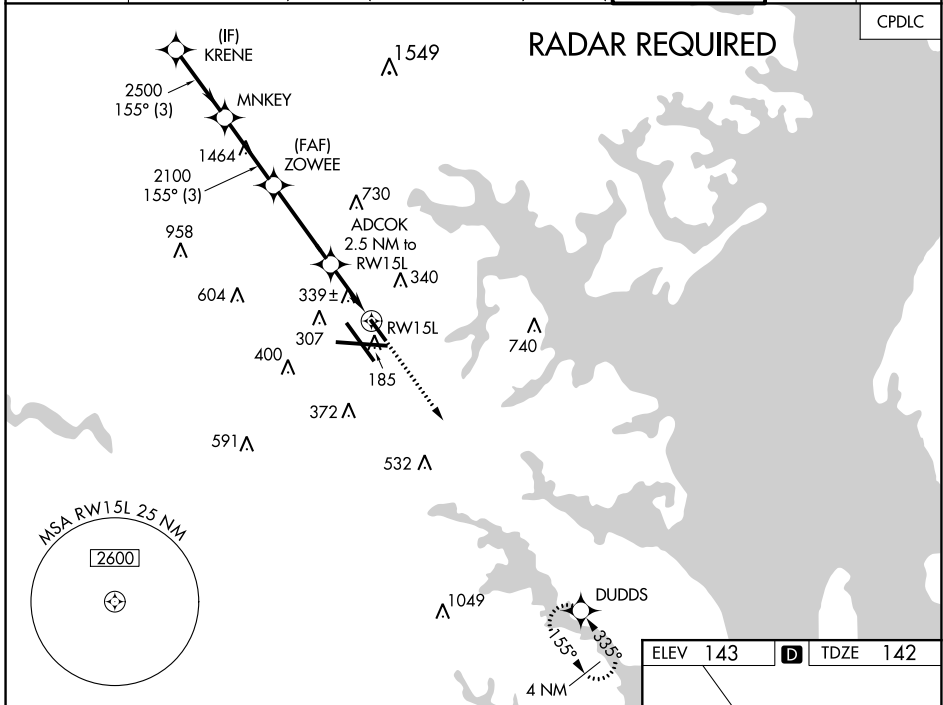
WAAS CH <b>40108</b> <b>W15A</b>	APP CRS <b>155°</b>	Rwy Idg TDZE Apt Elev	<b>5000</b> <b>142</b> <b>143</b>
--	------------------------	-----------------------------	---

BALTIMORE/ **RNAV (GPS) RWY 15L**  
WASHINGTON INTL THURGOOD MARSHALL (BWI)

▼ For uncompensated Baro-VNAV systems, LNAV/VNAV NA below -13°C (9°F) or above 54°C (130°F). DME/DME RNP-0.3 NA. Helicopter visibility reduction below RVR 4000 NA. Simultaneous approach authorized. Use of FD or AP providing RNAV track guidance required during simultaneous operations. LNAV procedure NA during simultaneous operations.

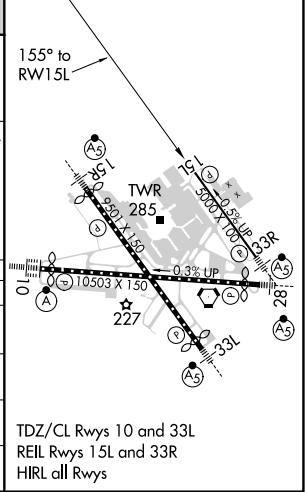
MISSED APPROACH: Climb to 2500 direct DUDDS and hold.

D-ATIS <b>115.1 127.8</b>	POTOMAC APP CON (020°-100°) <b>119.7 290.475</b> (101°-130°) <b>128.7 307.9</b>	(131°-180°) (181°-019°)	<b>BALTIMORE TOWER</b> <b>119.4 257.8</b>	GND CON <b>121.9</b>	CLNC DEL <b>118.05</b>
------------------------------	---	----------------------------	--	-------------------------	---------------------------



ELEV 143	<b>D</b> TDZE 142
----------	-------------------

CATEGORY	A	B	C	D
LPV DA	544-1 $\frac{3}{8}$	402 (500-1 $\frac{1}{2}$ )		NA
LNAV/VNAV DA	656-1 $\frac{3}{4}$	514 (600-1 $\frac{3}{4}$ )		NA
LNAV MDA	600/55	458 (500-1)		NA
<b>C</b> CIRCLING	640-1 497 (500-1)	660-1 517 (600-1)		NA



NE-3, 08 AUG 2024 to 05 SEP 2024

NE-3, 08 AUG 2024 to 05 SEP 2024