

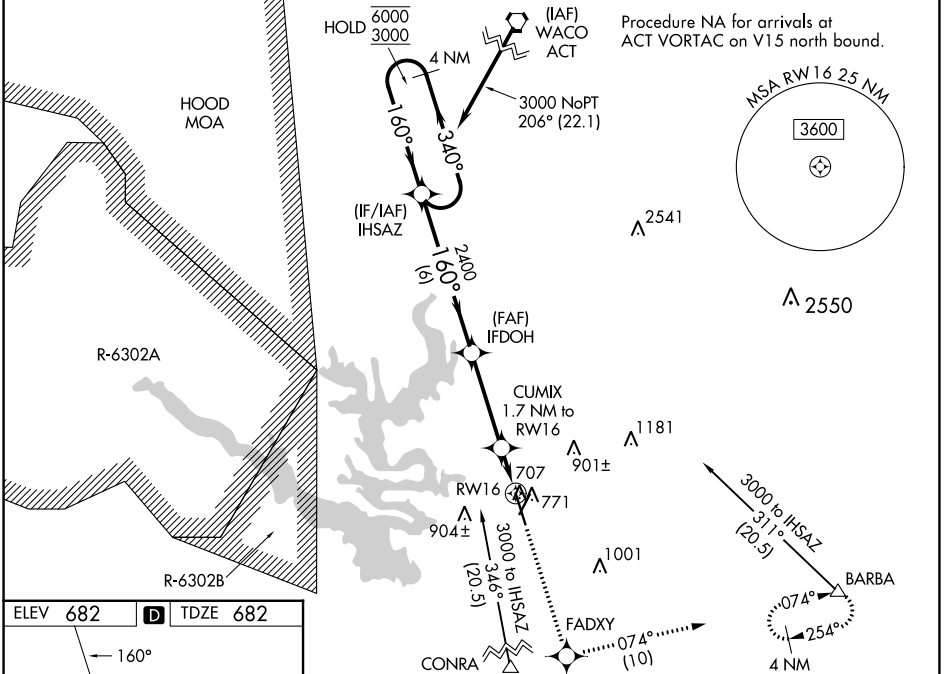
WAAS CH 78101 W16A	APP CRS 160°	Rwy Idg TDZE Apt Elev	7000 682 682
--	------------------------	-----------------------------	---

RNAV (GPS) RWY 16

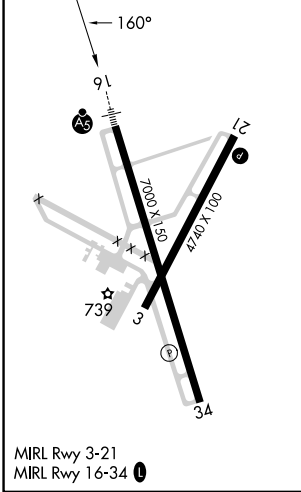
DRAUGHON-MILLER CENTRAL TEXAS RGNL (TPL)

RNP APCH - GPS.		MALSR	MISSED APPROACH: Climb to 3600 direct FADXY and on track 074° to BARBA and hold, continue climb-in-hold to 3600.
⚠	For uncompensated Baro-VNAV systems, LNAV/VNAV NA below -16°C or above 54°C. For inop ALS, increase LNAV/VNAV all Cats visibility to ¾ SM and LNAV Cats C/D visibility to ⅞ SM.		

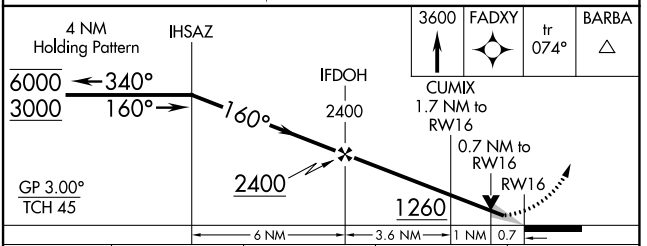
AWOS-3PT 134.975	GRAY APP CON 120.075 370.0	CLNC DEL 125.9	UNICOM 123.0 (CTAF) 📻
----------------------------	--------------------------------------	--------------------------	--



ELEV 682	D	TDZE 682
-----------------	----------	-----------------



MIRL Rwy 3-21
MIRL Rwy 16-34 **📻**



CATEGORY	A	B	C	D
LPV DA		882-½	200 (200-½)	
LNAV/VNAV DA		932-½	250 (300-½)	
LNAV MDA		960-½	278 (300-½)	
C CIRCLING	1140-1 458 (500-1)	1200-1 518 (600-1)	1280-1½ 598 (600-1½)	1420-2¼ 738 (800-2¼)

TEMPLE, TEXAS
Amdt 3 08SEP22

SC-3, 08 AUG 2024 to 05 SEP 2024

SC-3, 08 AUG 2024 to 05 SEP 2024