

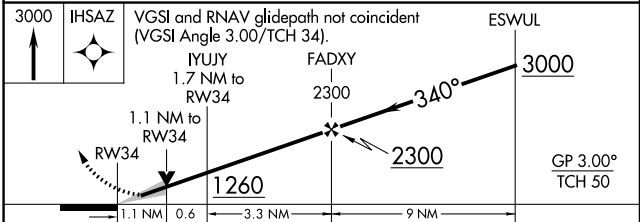
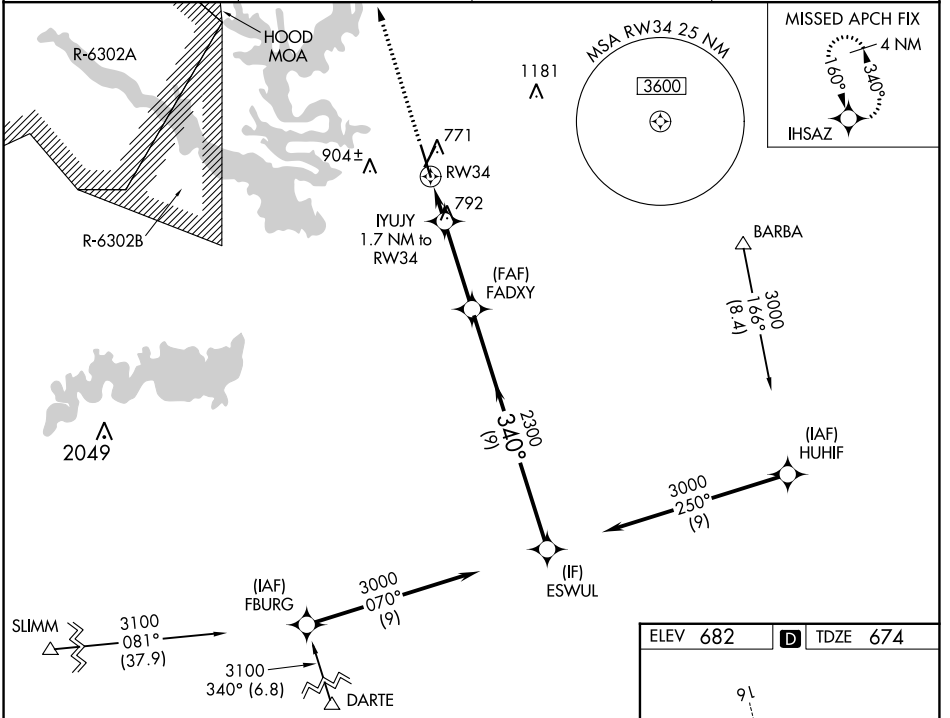
WAAS CH <b>82401</b> <b>W34A</b>	APP CRS <b>340°</b>	Rwy Idg TDZE Apt Elev	<b>7000</b> <b>674</b> <b>682</b>
--	------------------------	-----------------------------	---

# RNAV (GPS) RWY 34

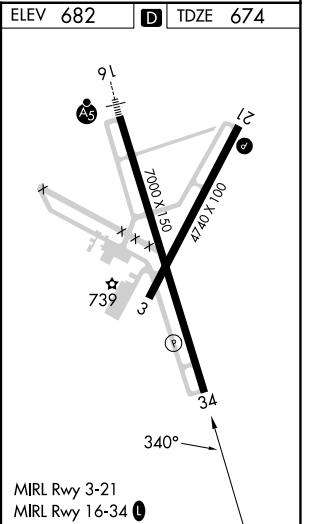
DRAUGHON-MILLER CENTRAL TEXAS RGNL (TPL)

RNP APCH.	MISSED APPROACH: Climb to 3000 direct ILSAZ and hold.
<p>▼ For uncompensated Baro-VNAV systems, LNAV/VNAV NA below -16°C or above 54°C .</p>	

AWOS-3PT <b>134.975</b>	GRAY APP CON <b>120.075 370.0</b>	CLNC DEL <b>125.9</b>	UNICOM <b>123.0</b> (CTAF) <b>U</b>
----------------------------	--------------------------------------	--------------------------	--



CATEGORY	A	B	C	D
LPV DA		874- <sup>3</sup> / <sub>4</sub>	200 (200- <sup>3</sup> / <sub>4</sub> )	
LNAV/VNAV DA		924- <sup>3</sup> / <sub>4</sub>	250 (300- <sup>3</sup> / <sub>4</sub> )	
LNAV MDA	1060-1	386 (400-1)	1060-1 <sup>1</sup> / <sub>8</sub>	386 (400-1 <sup>1</sup> / <sub>8</sub> )
CIRCLING	1140-1 458 (500-1)	1200-1 518 (600-1)	1280-1 <sup>1</sup> / <sub>2</sub> 598 (600-1 <sup>1</sup> / <sub>2</sub> )	1420-2 <sup>1</sup> / <sub>4</sub> 738 (800-2 <sup>1</sup> / <sub>4</sub> )



SC-3, 08 AUG 2024 to 05 SEP 2024

SC-3, 08 AUG 2024 to 05 SEP 2024