


VORTAC ELW <b>108.6</b> Chan 23	APP CRS <b>039°</b>	Rwy Idg <b>6002</b> TDZE <b>758</b> Apt Elev <b>782</b>
---------------------------------------	------------------------	---------------------------------------------------------------

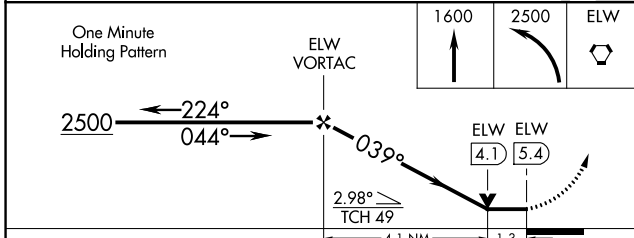
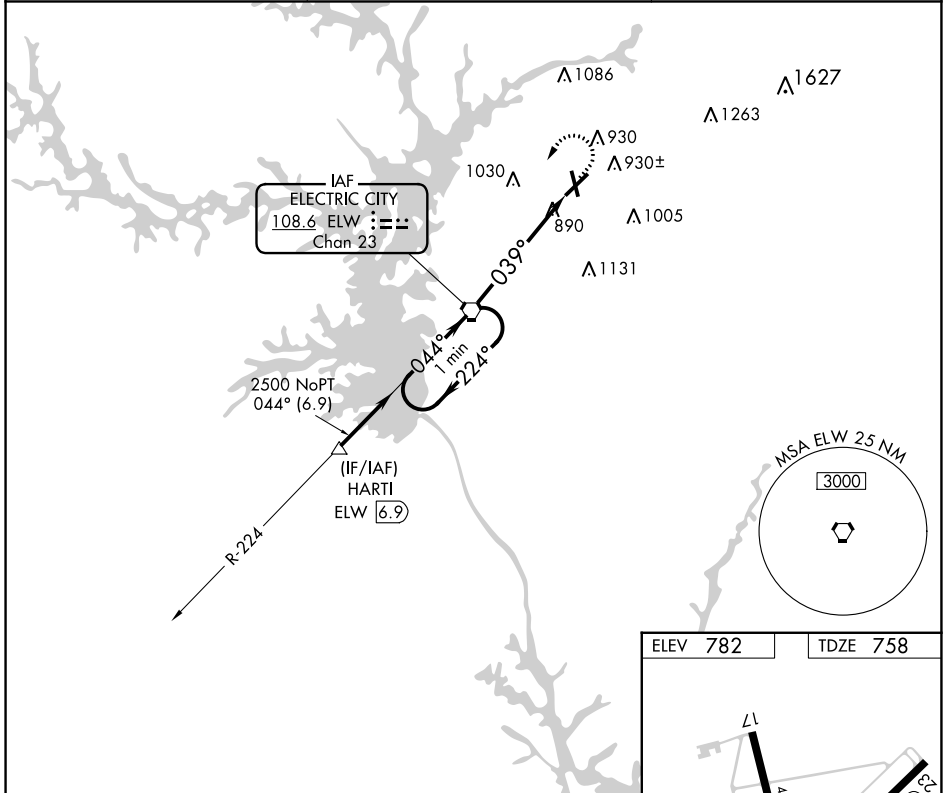
# VOR RWY 5

ANDERSON RGNL (A.ND)

⚠ If local altimeter setting not received, use Clemson altimeter setting and increase all MDAs 60 feet. VDP NA when using Clemson altimeter setting.  
 ⚠ Circling Rwy 17, 35 NA at night. 17, 35 helicopter visibility reduction below 1 SM NA.

MALSRL  
 MISSED APPROACH: Climb to 1600 then climbing left turn to 2500 direct ELW VORTAC and hold.

ASOS <b>120.675</b>	GREER APP CON ★ <b>118.8 270.275</b>	CTAF <b>123.6</b>
------------------------	-----------------------------------------	----------------------



ELEV 782	TDZE 758
----------	----------

FAF to MAP 5.4 NM	Knots	60	90	120	150	180
	Min:Seq	5:24	3:36	2:42	2:10	1:48

SE-2, 08 AUG 2024 to 05 SEP 2024

SE-2, 08 AUG 2024 to 05 SEP 2024