

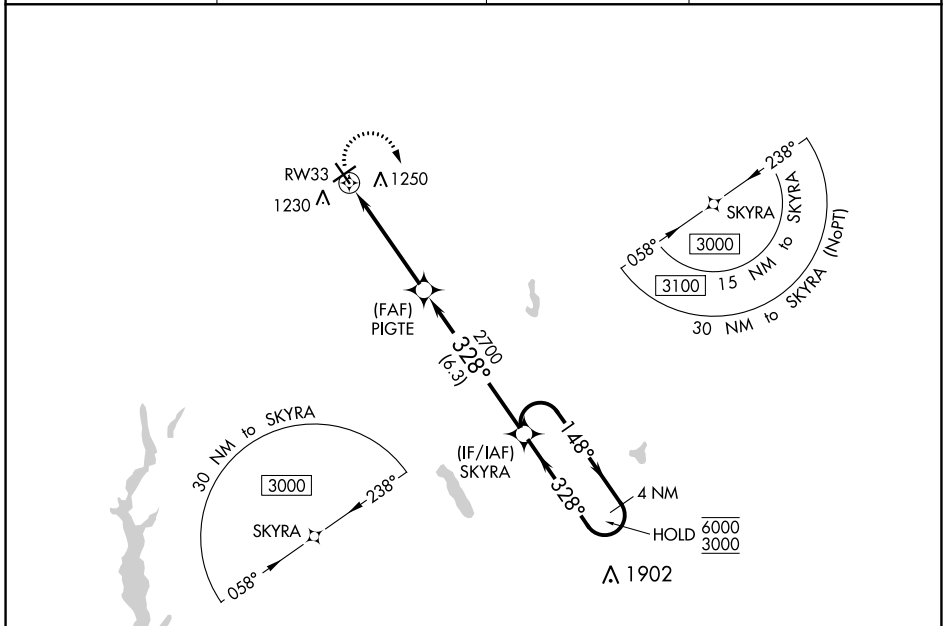
WAAS CH 78242 W33A	APP CRS 328°	Rwy Idg 4999 TDZE 1140 Apr Elev 1140
--	------------------------	---

RNAV (GPS) RWY 33

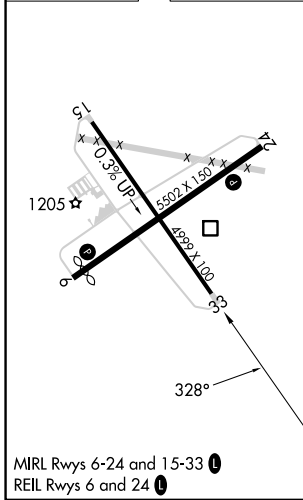
RICHMOND MUNI (RID)

RNP APCH.	<p>⚠ Circling Rwy 15 NA at night. Rwy 33 helicopter visibility reduction below ¾ SM NA.</p>	MISSED APPROACH: Climbing right turn to 3000 direct SKYRA and hold.
-----------	---	---

AWOS-3 121.225	COLUMBUS APP CON 134.45 352.05	CLNC DEL 133.55	UNICOM 122.7 (CTAF) 0
--------------------------	--	---------------------------	---------------------------------



ELEV 1140	D	TDZE 1140
-----------	----------	-----------



MIRL Rwy 6-24 and 15-33
REIL Rwy 6 and 24

	3000 SKYRA	PIGTE	SKYRA	4 NM Holding Pattern	
		1.2 NM to RWY 33			
		3.04° TCH 45°			
		2700			
		1.2 NM	3.5 NM	6.3 NM	
CATEGORY		A	B	C	D
LP MDA		1560-1	420 (500-1)	1560-1½	420 (500-1½)
LNAV MDA		1560-1	420 (500-1)	1560-1½	420 (500-1½)
C CIRCLING		1600-1	460 (500-1)	1600-1½	1700-2 460 (500-1½) 560 (600-2)

EC-2, 08 AUG 2024 to 05 SEP 2024

EC-2, 08 AUG 2024 to 05 SEP 2024