

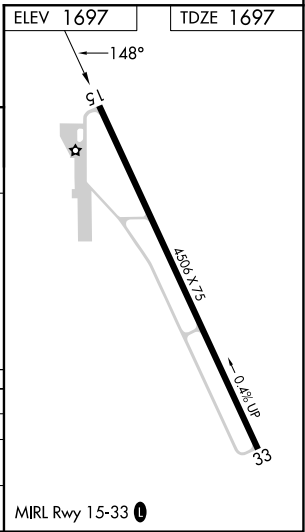
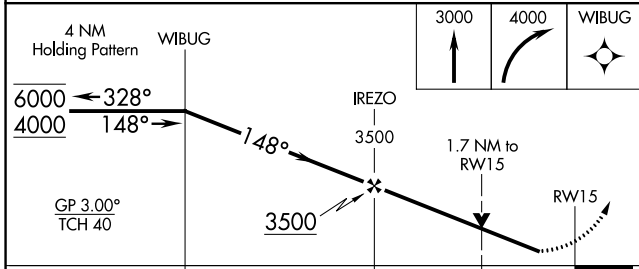
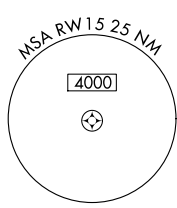
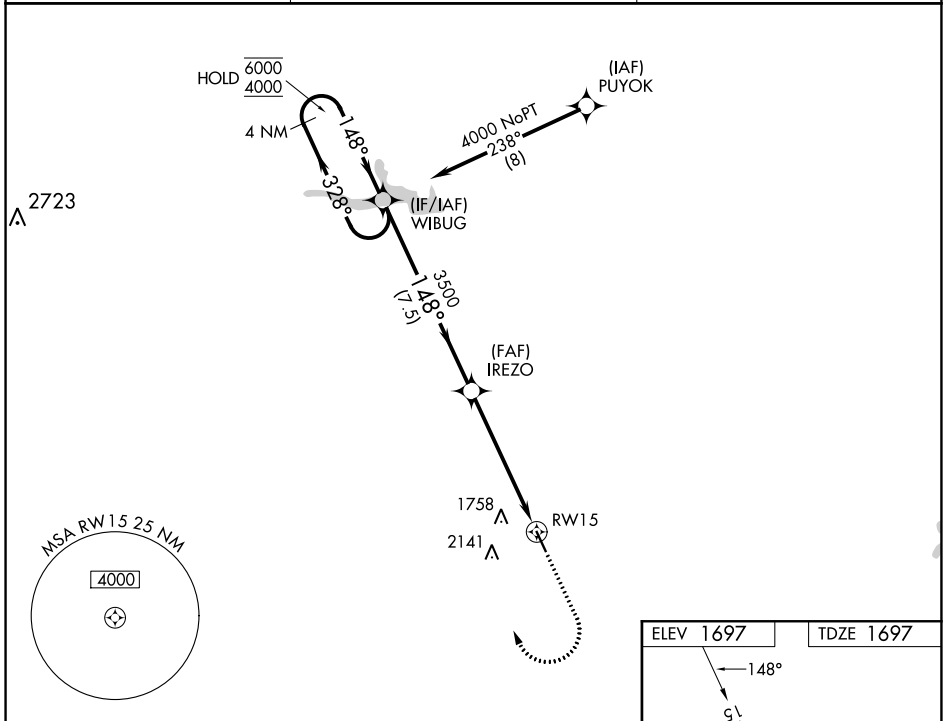
WAAS CH 86529 W15A	APP CRS 148°	Rwy Idg TDZE Apt Elev	4506 1697 1697
--	------------------------	-----------------------------	---

RNAV (GPS) RWY 15

COLEMAN MUNI (COM)

RNP APCH - GPS.	MISSED APPROACH: Climb to 3000 then climbing right turn to 4000 direct WIBUG and hold.
<p>▼ Rwy 15 helicopter visibility reduction below 3/4 SM NA.</p> <p>▲ For uncompensated Baro-VNAV systems, LNAV/VNAV NA below -18°C or above 54°C.</p>	

AWOS-3PT 119.1	FORT WORTH CENTER 127.45 290.3	UNICOM 122.8 (CTAF) 0
--------------------------	--	---------------------------------



CATEGORY	A	B	C	D
LPV DA	1947-3/4	250 (300-3/4)		NA
LNAV/VNAV DA	2238-15/8	541 (600-15/8)		NA
LNAV MDA	2280-1	583 (600-1)	2280-13/4 583 (600-13/4)	NA

SC-3, 08 AUG 2024 to 05 SEP 2024

SC-3, 08 AUG 2024 to 05 SEP 2024