

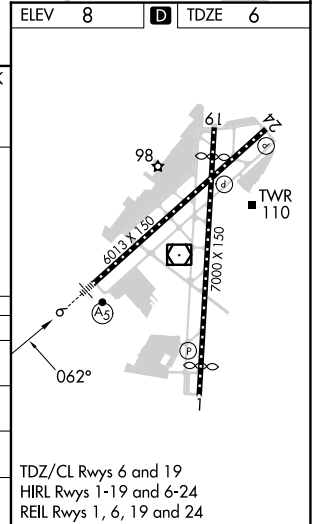
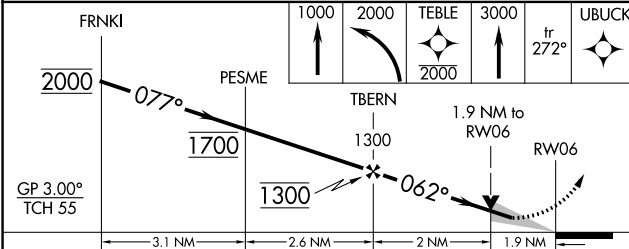
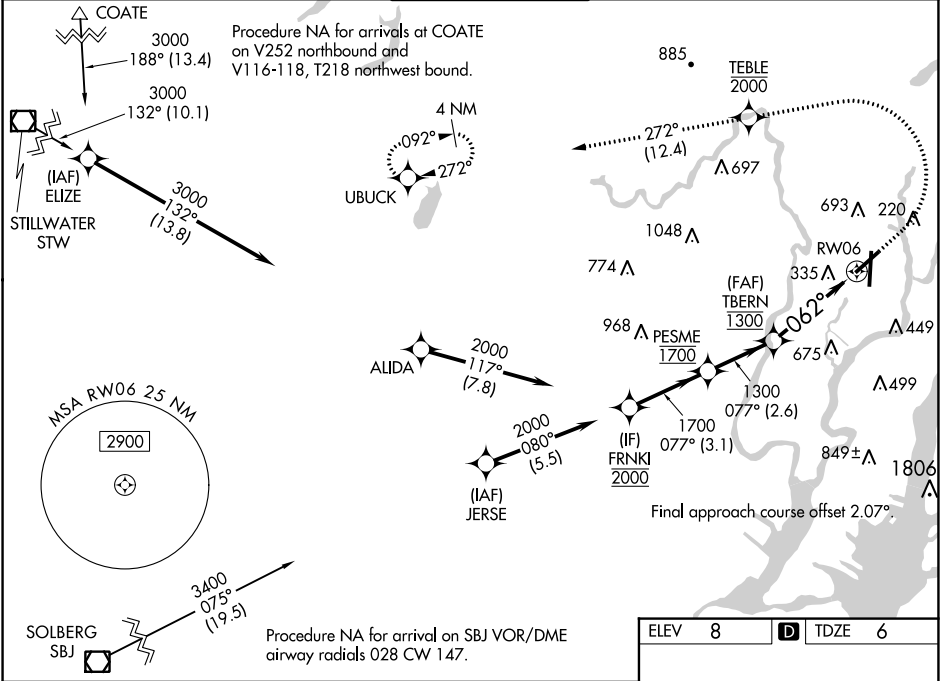
WAAS CH 65634 W06B	APP CRS 062°	Rwy Idg TDZE Apt Elev	6013 6 8
--	------------------------	-----------------------------	-------------------------------------

RNAV (GPS) X RWY 6

TETERBORO (TEB)

RNP APCH - GPS. RADAR required.	MALSR	MISSED APPROACH: Climb to 1000, then climbing left turn to 2000 direct TEBLE, cross TEBLE at or below 2000, then climb to 3000 on track 272° to UBUCK and hold.
▼ Circling NA for Cats B, C and D northwest of Rws 6 and 19. For uncompensated Baro-VNAV systems, LNAV/VNAV NA below -13°C or above 54°C. For inop ALS, increase LPV all Cats visibility to 1½ SM, and LNAV/VNAV all Cats visibility to 1¾ SM.	AS	

D-ATIS 114.2 132.85	NEW YORK APP CON 127.6 379.9	TETERBORO TOWER 119.5	GND CON 121.9	CLNC DEL 128.05	CPDLC
-------------------------------	--	---------------------------------	-------------------------	---------------------------	-------



CATEGORY	A	B	C	D
LPV DA	459/45		453 (500-¾)	
LNAV/VNAV DA	672-1½		666 (700-1½)	
LNAV MDA	660/24 654 (700-½)		660-1¾ 654 (700-1¾)	
CIRCLING	760-1 752 (800-1)		820-2½ 812 (900-2½) 1040-3 1032 (1100-3)	

NE-2, 08 AUG 2024 to 05 SEP 2024

NE-2, 08 AUG 2024 to 05 SEP 2024