

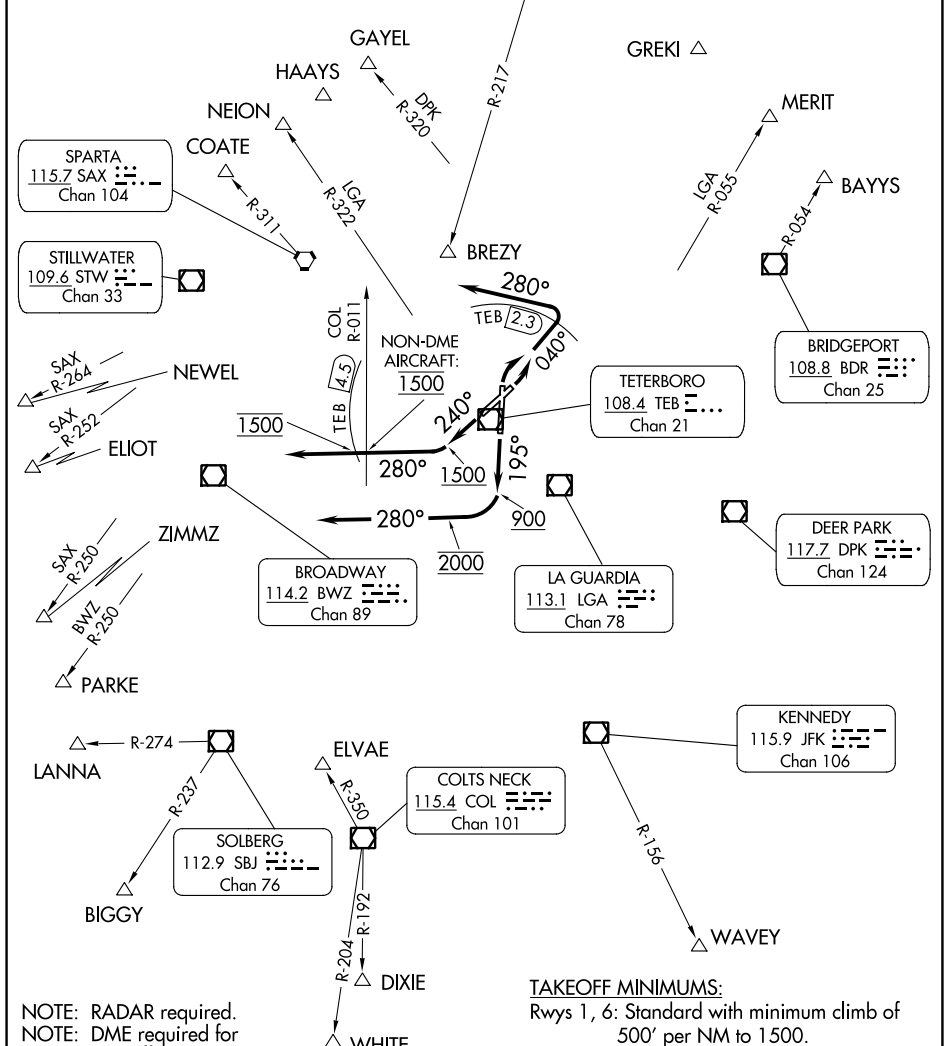
TETERBORO FOUR DEPARTURE

D-ATIS
114.2 132.85
CLNC DEL 128.05
CPDLC
GND CON 121.9
TETERBORO TOWER
119.5
NEW YORK DEP CON
119.2 126.7 379.9

HUGENOT
116.1 HHO
Chan 108

**TOP ALTITUDE:
2000**

KINGSTON
117.6 IGN
Chan 123



NE-2, 08 AUG 2024 to 05 SEP 2024

NE-2, 08 AUG 2024 to 05 SEP 2024

NOTE: RADAR required.
NOTE: DME required for
Takeoff Rwy 1, 6.
NOTE: GPS required for
GREKI Departures.

TAKEOFF MINIMUMS:
Rwys 1, 6: Standard with minimum climb of
500' per NM to 1500.
Rwy 19: 600-2¼ or Standard with minimum
climb of 352' per NM to 700.
Rwy 24: 400-1¾ or Standard with minimum
climb of 463' per NM to 1500.

Note: Chart not to scale.

TETERBORO FOUR DEPARTURE