

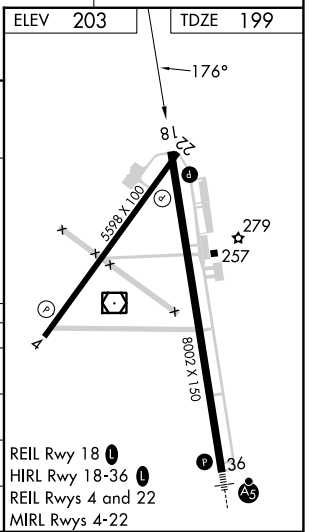
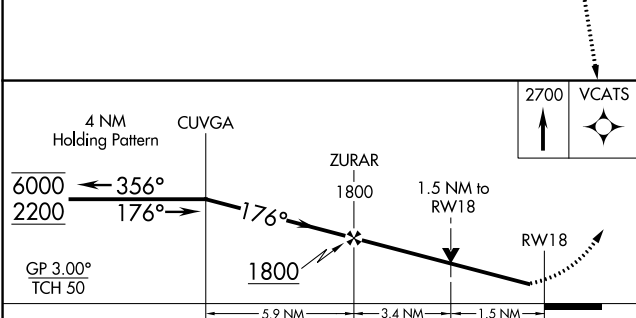
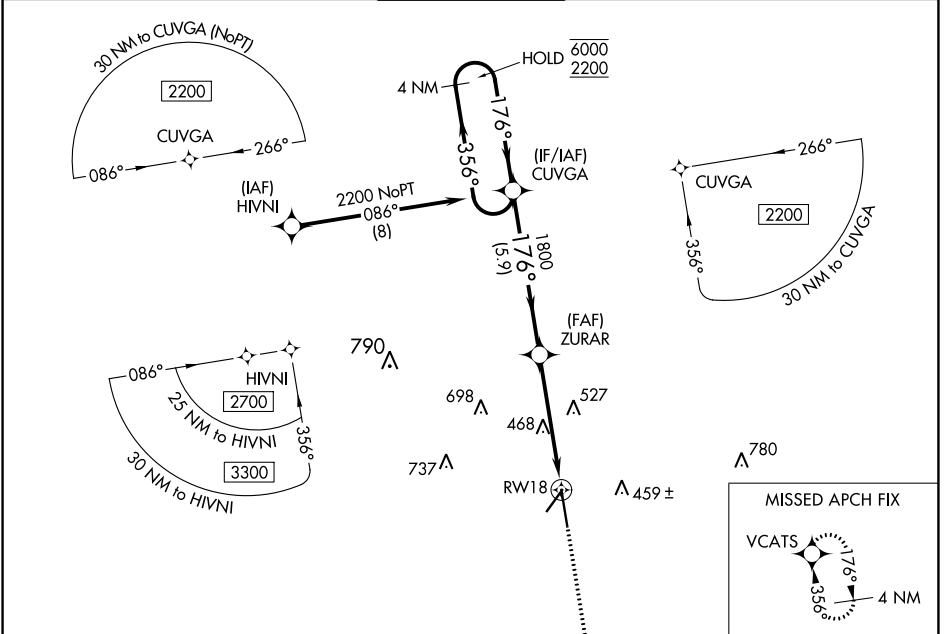
WAAS CH <b>87101</b> <b>W18A</b>	APP CRS <b>176°</b>	Rwy Idg <b>8002</b> TDZE <b>199</b> Apt Elev <b>203</b>
--	------------------------	--

# RNAV (GPS) RWY 18

VALDOSTA RGNL (VLD)

RNP APCH - GPS.		<p><b>▼</b> Rwy 18 helicopter visibility reduction below 3/4 SM NA. For uncompensated Baro-VNAV systems, LNAV/VNAV NA below -4°C or above 54°C.</p> <p><b>▲</b> MISSED APPROACH: Climb to 2700 direct VCATS and hold.</p>	
-----------------	--	---	--

ASOS <b>126.225</b>	VALDOSTA APP CON * <b>126.6 285.6</b>	VALDOSTA TOWER * <b>128.35 (CTAF) 0</b>	GND CON <b>121.7</b>	UNICOM <b>122.95</b>
------------------------	--	--	-------------------------	-------------------------



CATEGORY	A	B	C	D
LPV DA		454-3/4	255 (300-3/4)	
LNAV/VNAV DA		458-3/4	259 (300-3/4)	
LNAV MDA	720-1	521 (600-1)	720-1 1/2	521 (600-1 1/2)
CIRCLING	720-1	517 (600-1)	900-2	1020-2 3/4
			697 (700-2)	817 (900-2 3/4)

SE-4, 08 AUG 2024 to 05 SEP 2024

SE-4, 08 AUG 2024 to 05 SEP 2024