

APP CRS **041°**  
 Rwy Idg **5598**  
 TDZE **202**  
 Apt Elev **203**

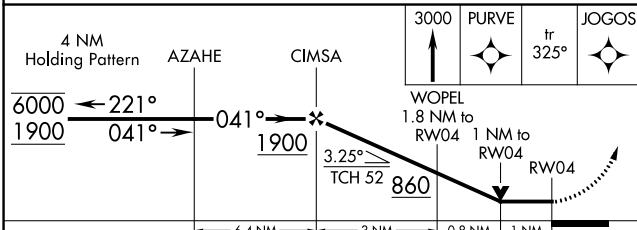
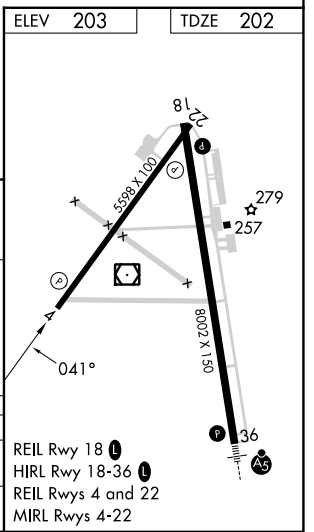
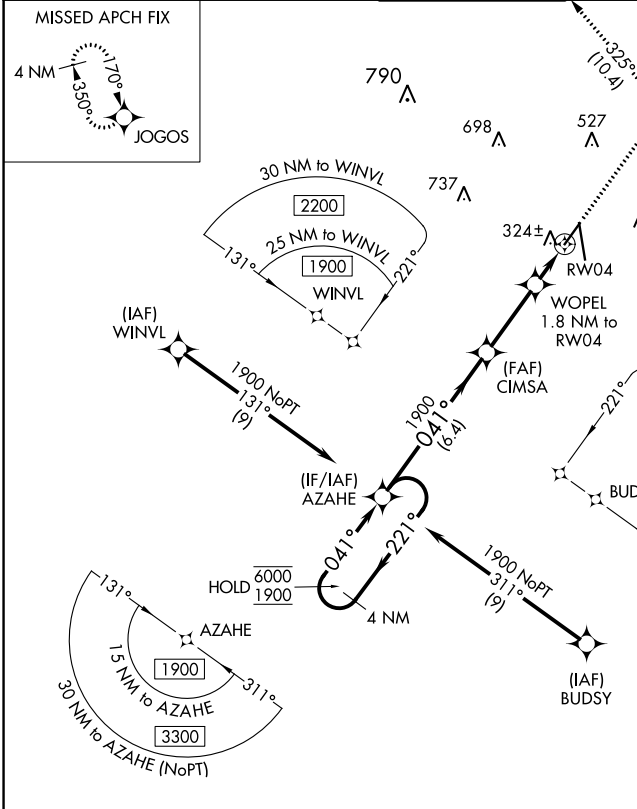
# RNAV (GPS) RWY 4

VALDOSTA RGNL (VLD)

RNP APCH - GPS.  
 Rwy 4 helicopter visibility reduction below 3/4 SM NA.

MISSED APPROACH: Climb to 3000 direct PURVE and on track 325° to JOGOS and hold.

ASOS <b>126.225</b>	VALDOSTA APP CON * <b>126.6 285.6</b>	VALDOSTA TOWER * <b>128.35 (CTAF) 0</b>	GND CON <b>121.7</b>	UNICOM <b>122.95</b>
------------------------	--	--	-------------------------	-------------------------



CATEGORY	A	B	C	D
LNAV MDA	580-1 378 (400-1)			
CIRCLING	640-1 437 (500-1)	700-1 497 (500-1)	900-2 697 (700-2)	1020-2 3/4 817 (900-2 3/4)

REIL Rwy 18 0  
 HIRL Rwy 18-36 0  
 REIL Rws 4 and 22  
 MIRL Rws 4-22

SE-4, 08 AUG 2024 to 05 SEP 2024

SE-4, 08 AUG 2024 to 05 SEP 2024