

VOR/DME OTK 114.8 Chan 95	APP CRS 190°	Rwy Idg 8002 TDZE 199 Apt Elev 203
---	------------------------	---

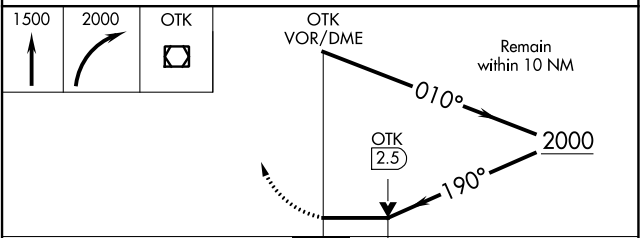
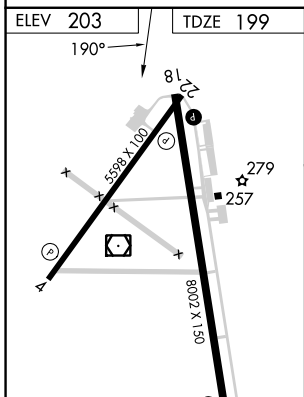
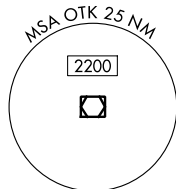
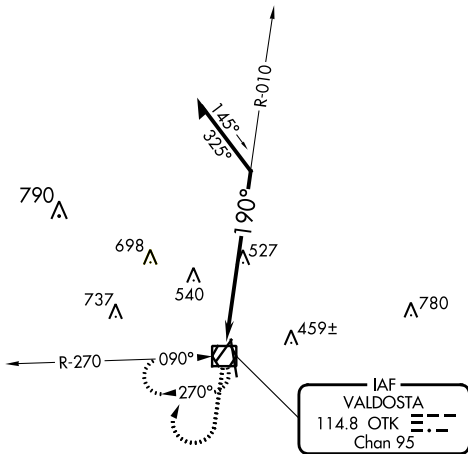
VOR RWY 18

VALDOSTA RGNL (VLD)

▼
▲ Rwy 18 helicopter visibility reduction below ¼ SM NA.

MISSED APPROACH: Climb to 1500 then climbing right turn to 2000 direct OTK VOR/DME and hold, continue climb-in-hold to 2000.

ASOS 126.225	VALDOSTA APP CON * 126.6 285.6	VALDOSTA TOWER * 128.35 (CTAF) 0	GND CON 121.7	UNICOM 122.95
------------------------	--	---	-------------------------	-------------------------



CATEGORY	A	B	C	D
S-18	840-1 641 (700-1)		840-1 7/8 641 (700-1 7/8)	840-2 641 (700-2)
CIRCLING	840-1 637 (700-1)		900-2 697 (700-2)	1020-2 3/4 817 (900-2 3/4)

REIL Rwy 18 **0**
HIRL Rwy 18-36 **1**
REIL Rwy 4 and 22
MIRL Rwy 4-22

SE-4, 08 AUG 2024 to 05 SEP 2024

SE-4, 08 AUG 2024 to 05 SEP 2024