

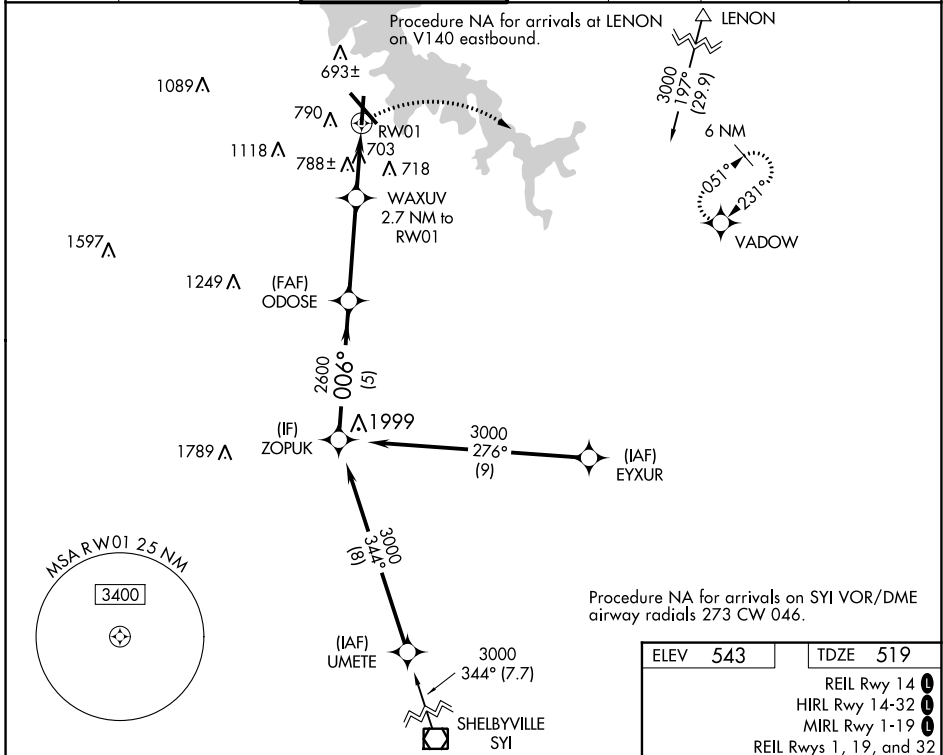
WAAS CH <b>86632</b> W01A	APP CRS <b>006°</b>	Rwy Idg <b>5546</b> TDZE <b>519</b> Apt Elev <b>543</b>
---------------------------------	------------------------	---

# RNAV (GPS) RWY 1

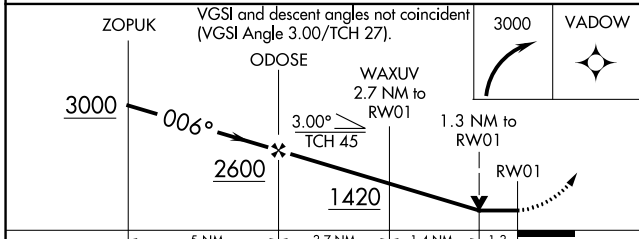
SMYRNA (MQY)

<b>⚠</b> DME/DME RNP-0.3 NA. When local altimeter setting not received, use Nashville Intl altimeter setting and increase all MDA 40. Helicopter visibility reduction below 3/4 SM NA.	MISSED APPROACH: Climbing right turn to 3000 direct VADOW and hold.
--	---

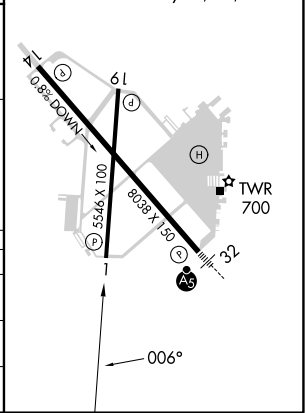
AWOS-3PT <b>119.125</b>	NASHVILLE APP CON <b>118.4 360.7</b>	SMYRNA TOWER ★ <b>118.5 (CTAF) 0 233.1</b>	GND CON <b>121.4</b>	CLNC DEL <b>121.4</b>	CLNC DEL <b>121.7</b> (When twr closed)	UNICOM <b>122.95</b>
----------------------------	---	---	-------------------------	--------------------------	---	-------------------------



ELEV <b>543</b>	TDZE <b>519</b>
REIL Rwy 14 <b>1</b>	
HIRL Rwy 14-32 <b>1</b>	
MIRL Rwy 1-19 <b>1</b>	
REIL Rws 1, 19, and 32 <b>1</b>	



CATEGORY	A	B	C	D
LP MDA	960-1	441 (500-1)	960-1 3/8	441 (500-1 3/8)
RNAV MDA	1100-1	581 (600-1)	1100-1 3/4	581 (600-1 3/4)
<b>C</b> CIRCLING	1100-1 557 (600-1)	1200-1 657 (700-1)	1240-2 697 (700-2)	1480-3 937 (1000-3)



SE-1, 08 AUG 2024 to 05 SEP 2024

SE-1, 08 AUG 2024 to 05 SEP 2024