

HI-TACAN Z RWY 5L

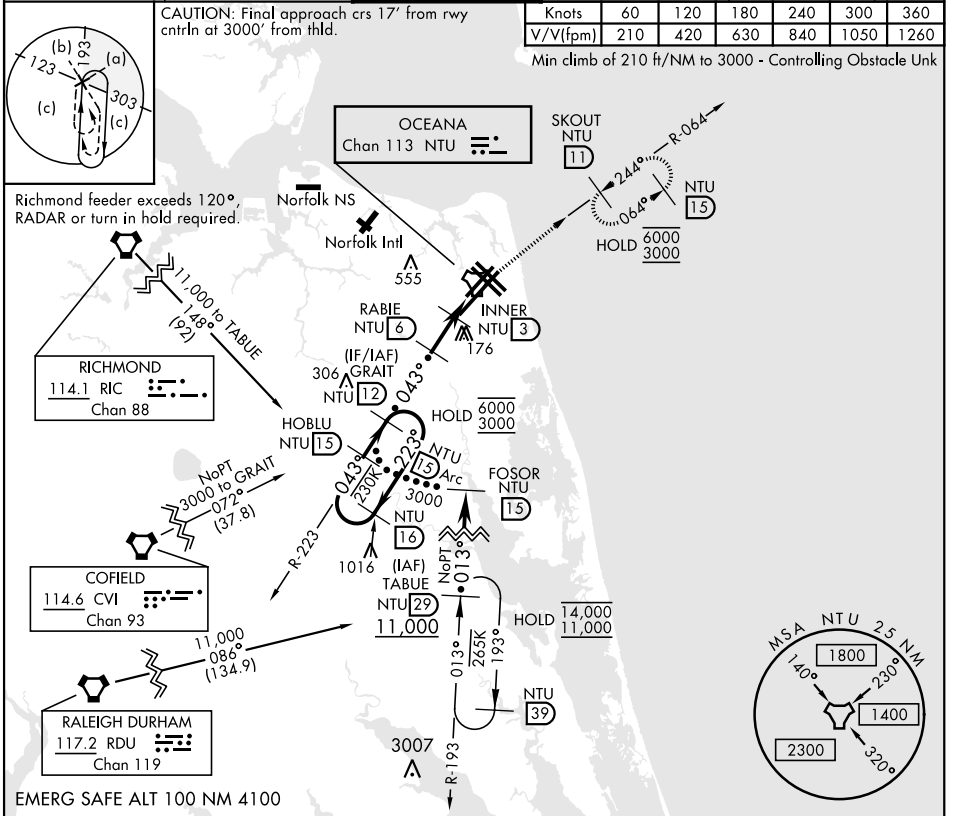
TACAN NTU Chan 113	APCH CRS 043°	Rwy Idg 8000 TDZE 20 Arprt Elev 22	AL-934 [USN]	OCEANA NAS (APOLLO SOUCEK FLD)	(KNTU)
-----------------------	------------------	---	--------------	--------------------------------	--------

MISSED APPROACH: Climb to 3000 via R-223 to NTU TACAN and via R-064 to SKOUT and hold.

ATIS 317.6	APP/DEP CON 123.9 266.8	TOWER 127.075 360.2	GND CON 119.6 336.4	CLNC DEL 254.4	ASR/ PAR
---------------	----------------------------	------------------------	------------------------	-------------------	-------------

CAUTION: Final approach crs 17° from rwy cntrl at 3000' from thld.	Knots	60	120	180	240	300	360
	V/V(fpm)	210	420	630	840	1050	1260

Min climb of 210 ft/NM to 3000 - Controlling Obstacle Unk



NE-3, 08 AUG 2024 to 05 SEP 2024

NE-3, 08 AUG 2024 to 05 SEP 2024

EMERG SAFE ALT 100 NM 4100			3000 NTU R-223	NTU	NTU R-064	ELEV 22	TDZE 20
CATEGORY	C	D	E				
S-5L	420-1½		400 (400-1½)				
CIRCLING	600-1½ 578 (600-1½)	600-2 578 (600-2)	900-3 878 (900-3)				

HI-TACAN Z RWY 5L

HIRL all Rwy
Wave-Off Lgt all Rwy