

# HI-TACAN Z RWY 5R

TACAN NTU Chan <b>113</b>	APCH CRS <b>043°</b>	Rwy Idg TDZE Arprt Elev <b>12,001</b> <b>19</b> <b>22</b>
------------------------------	-------------------------	--

AL-934 [USN] OCEANA NAS (APOLLO SOUCEK FLD) (KNTU)

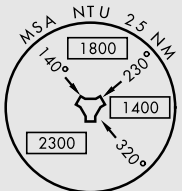
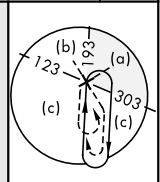
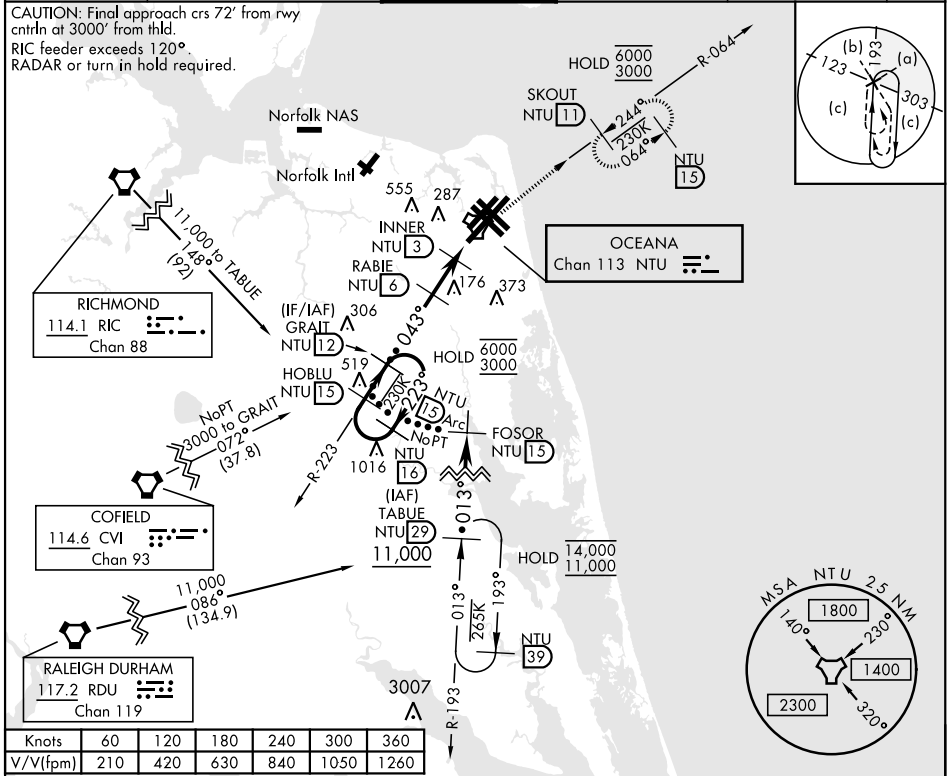
\* When ALS inop, increase CAT CDE vis to 1½ miles.

ALSF-1

MISSED APPROACH: Climb to 3000 via R-223 to NTU TACAN, and via R-064 to SKOUT and hold.

ATIS <b>317.6</b>	APP/DEP CON <b>123.9 266.8</b>	TOWER <b>127.075 360.2</b>	GND CON <b>119.6 336.4</b>	CLNC DEL <b>254.4</b>	ASR/ PAR
----------------------	-----------------------------------	-------------------------------	-------------------------------	--------------------------	-------------

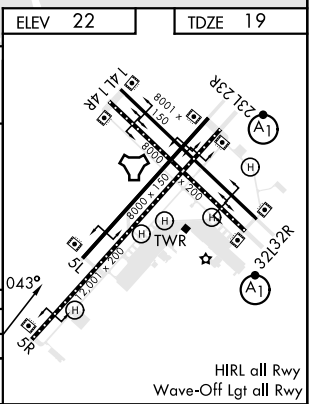
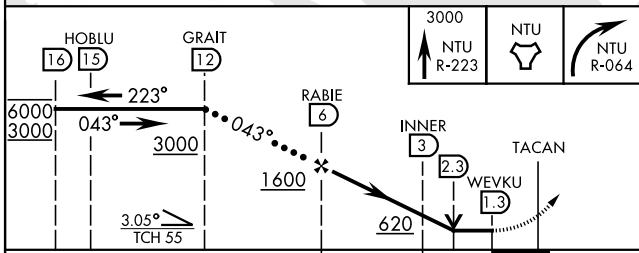
CAUTION: Final approach crs 72° from rwy cntrln at 3000' from thld.  
RIC feeder exceeds 120°.  
RADAR or turn in hold required.



Knots	60	120	180	240	300	360
V/V(fpm)	210	420	630	840	1050	1260

Min climb of 210 ft/NM to 3000 - Controlling Obstacle Unk  
EMERG SAFE ALT 100 NM 4100

ELEV	22	TDZE	19
------	----	------	----



CATEGORY	C	D	E
S-5R *	420-¾	401	(400-¾)
CIRCLING	600-1½ 578 (600-1½)	600-2 578 (600-2)	900-3 878 (900-3)

HIRL all Rwy  
Wave-Off Lgt all Rwy

VIRGINIA BEACH, VIRGINIA 36°49'N-76°02'W OCEANA NAS (APOLLO SOUCEK FLD) (KNTU)

Orig 27JAN22

# HI-TACAN Z RWY 5R

NE-3, 08 AUG 2024 to 05 SEP 2024

NE-3, 08 AUG 2024 to 05 SEP 2024