

RNAV (GPS) RWY 32L/R

APCH CRS 325°	Rwy Idg	32L	32R
	TDZE	8000	8001
	Arprt Elev	22	20

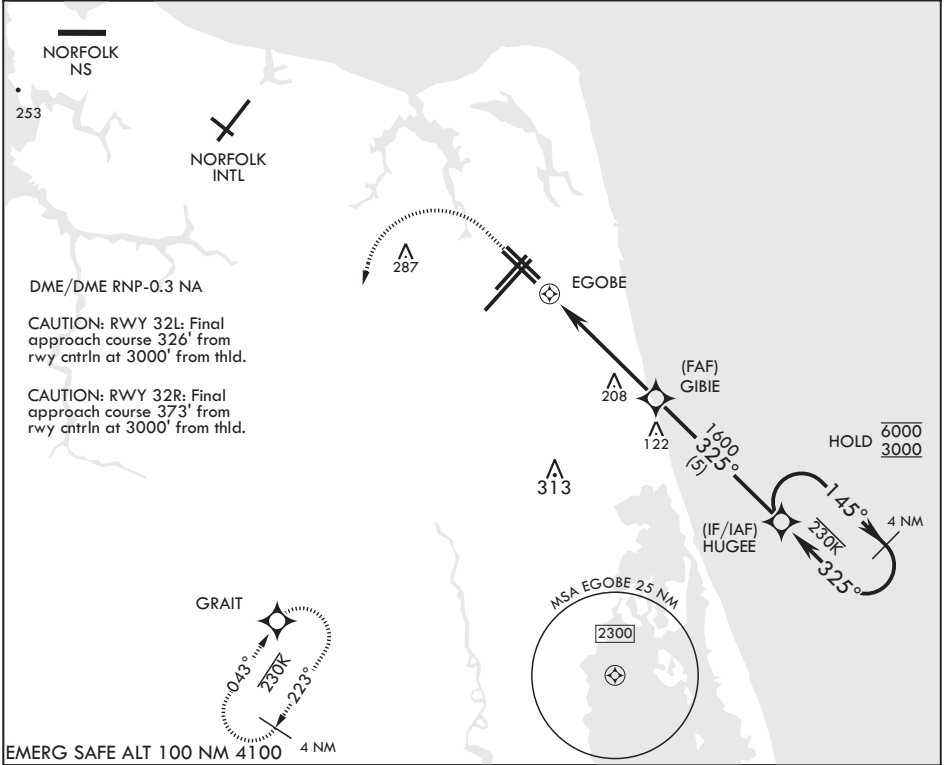
AL-934 (USN) OCEANA NAS (APOLLO SOUCEK FLD) (KNTU)

▼ * When ALS inop increase CAT AB vis to 1 mile, CAT CD vis to 1 1/8 miles.

Rwy 32L
ALSF-1

MISSED APPROACH: Climbing 1100 then climbing left turn to 3000 direct GRAIT and hold.

ATIS 317.6	APP CON/DEP CON 123.9 266.8	TOWER 127.075 360.2	GND CON 119.6 336.4	CLNC DEL 254.4	ASR/PAR
---------------	--------------------------------	------------------------	------------------------	-------------------	---------



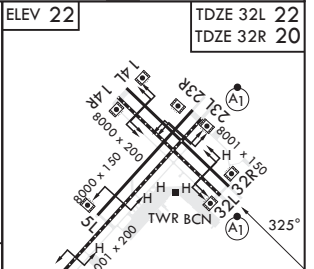
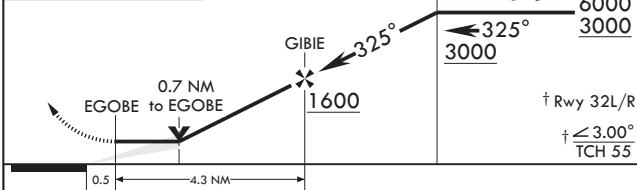
1100	3000	GRAIT
crs 325°		

RNAV TCH not coincident with PAR TCH (50ft).

4 NM Holding Pattern

ELEV 22

TDZE 32L 22
TDZE 32R 20



CATEGORY	A	B	C	D
LNVA MDA	460-1	440 (500-1)	460-1¼	440 (500-1¼)
LNVA MDA*	460-½	438 (500-½)	460-¾	438 (500-¾)
◻ CIRCLING	500-1	478 (500-1)	600-1½ 578 (600-1½)	600-2 578 (600-2)

HIRL all Rwys
Wave-Off Lights all Rwys

RNAV (GPS) RWY 32L/R

NE-3, 08 AUG 2024 to 05 SEP 2024

NE-3, 08 AUG 2024 to 05 SEP 2024