

VIRGINIA BEACH, VIRGINIA

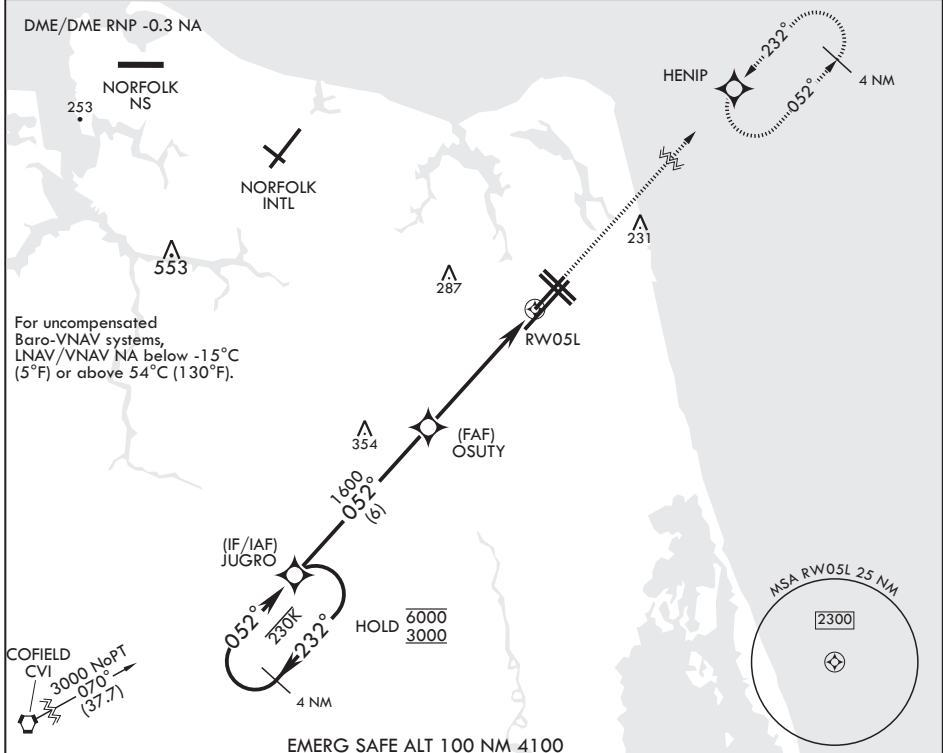
RNAV (GPS) RWY 5L

WAAS CH 63997 W05A	APCH CRS 052°	Rwy ldg TDZE Arprt Elev	8000 20 22
---------------------------------	-------------------------	-------------------------------	---------------------------------------

AL-934 (USN) OCEANA NAS (APOLLO SOUCEK FLD) (KNTU)

▽ MISSED APPROACH: Climb to 3000 direct HENIP and hold. Continue climb in hold to 3000.

ATIS 317.6	APP CON/DEP CON 123.9 266.8	TOWER 127.075 360.2	GND CON 119.6 336.4	CLNC DEL 254.4	ASR/PAR
----------------------	---------------------------------------	-------------------------------	-------------------------------	--------------------------	---------

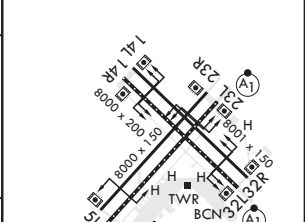
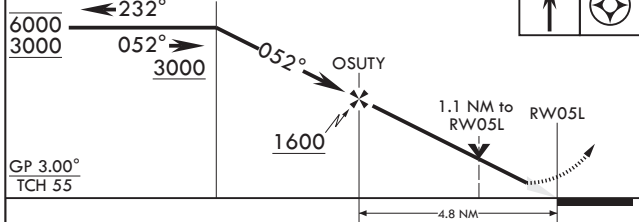


NE-3, 08 AUG 2024 to 05 SEP 2024

NE-3, 08 AUG 2024 to 05 SEP 2024

EMERG SAFE ALT 100 NM 4100

4 NM Holding Pattern	JUGRO	RNAV TCH not coincident with PAR TCH (50ft).	3000	HENIP	ELEV 22	TDZE 20
----------------------	-------	--	------	-------	---------	---------



CATEGORY	A	B	C	D
LPV DA	220- ³ / ₈		200	(200- ³ / ₈)
LNAV/VNAV DA	305- ⁷ / ₈ 285 (300- ⁷ / ₈)	316- ⁷ / ₈ 296 (300- ⁷ / ₈)	324- ⁷ / ₈ 304 (400- ⁷ / ₈)	335- ⁷ / ₈ 315 (400- ⁷ / ₈)
LNAV MDA	440-1	420 (500-1)	440-1 ¹ / ₂	420 (500-1 ¹ / ₂)
C CIRCLING	500-1	478 (500-1)	600-1 ¹ / ₂ 578 (600-1 ¹ / ₂)	600-2 578 (600-2)

HIRL all Rws
Wave-Off Lights all Rws

VIRGINIA BEACH, VIRGINIA

36°49'N - 76°02'W OCEANA NAS (APOLLO SOUCEK FLD) (KNTU)

Amdt 4 27JAN22

RNAV (GPS) RWY 5L