

VIRGINIA BEACH, VIRGINIA

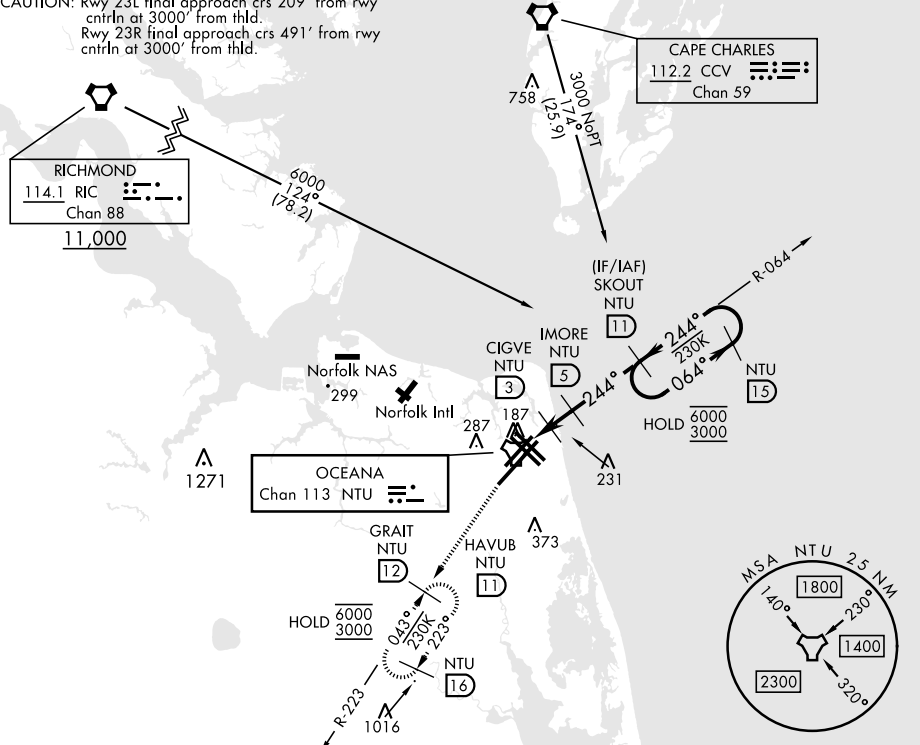
TACAN Y RWY 23L/R

TACAN NTU Chan 113	APCH CRS 244°	Rwy ldg 23L 12,001 23R 8000 TDZE 23L 21 23R 20 Arprt Elev	AL-934 [USN] OCEANA NAS (APOLLO SOUCEK FLD) (KNTU)
-----------------------	------------------	---	---

ALSIF-1
 * When ALS inop, increase CAT AB vis to 1 mile, CAT CD vis to 1½ miles.
 MISSED APPROACH: Climb to 3000 via R-064 to NTU TACAN and via R-223 to GRAIT and hold.

ATIS 317.6	APP/DEP CON 123.9 266.8	TOWER 127.075 360.2	GND CON 119.6 336.4	CLNC DEL 254.4	ASR/ PAR
---------------	----------------------------	------------------------	------------------------	-------------------	-------------

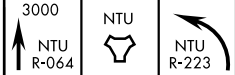
CAUTION: Rwy 23L final approach crs 209° from rwy ctrln at 3000' from thld.
Rwy 23R final approach crs 491° from rwy ctrln at 3000' from thld.



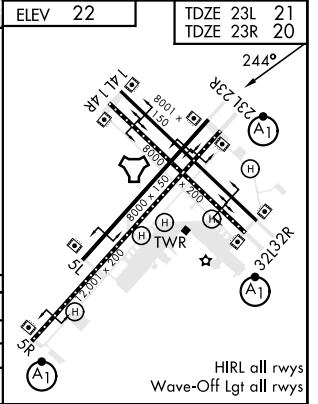
NE-3, 08 AUG 2024 to 05 SEP 2024

NE-3, 08 AUG 2024 to 05 SEP 2024

EMERG SAFE ALT 100 NM 4100



CATEGORY	A	B	C	D
S-23L *	440-½	419 (500-½)	440-¾	419 (500-¾)
S-23R	440-1	420 (500-1)	440-1⅛	420 (500-1⅛)
CIRCLING	500-1	478 (500-1)	600-1½ 578 (600-1½)	600-2 578 (600-2)



VIRGINIA BEACH, VIRGINIA

36° 49' N-76° 02' W

OCEANA NAS (APOLLO SOUCEK FLD) (KNTU)

Orig 27JAN22

TACAN Y RWY 23L/R