

TACAN Y RWY 5R

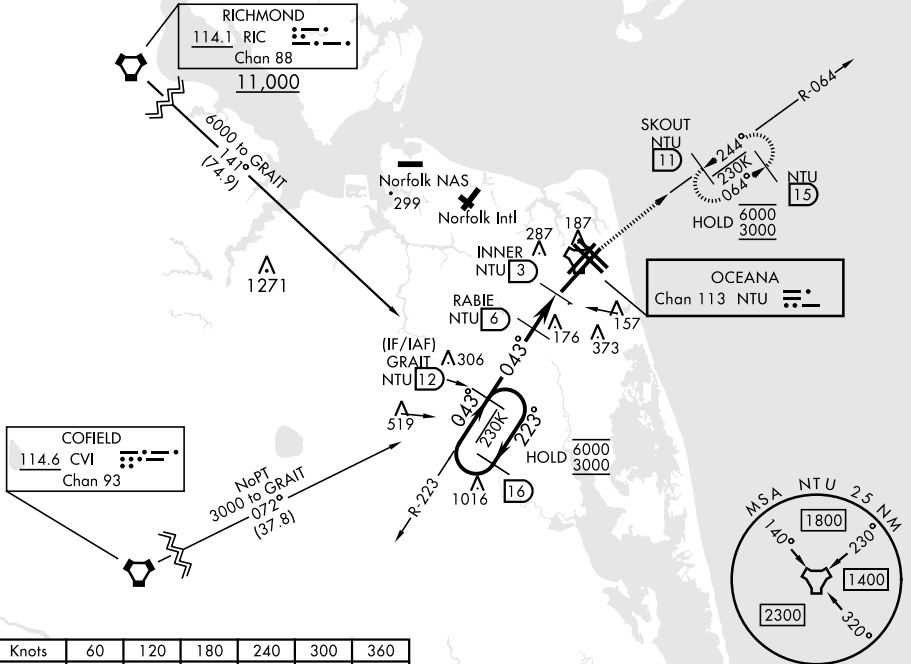
TACAN NTU Chan 113	APCH CRS 043°	Rwy Idg 12,001	TDZE 19	Arprt Elev 22
-----------------------	------------------	-------------------	------------	------------------

AL-934 [USN] OCEANA NAS (APOLLO SOUCEK FLD) (KNTU)

▼ * When ALS inop, increase CAT AB vis to 1 mile, CAT CD vis to 1½ miles.
ALSF-1
MISSED APPROACH: Climb to 3000 via R-223 to NTU TACAN and via R-064 to SKOUT and hold.

ATIS 317.6	APP/DEP CON 123.9 266.8	TOWER 127.075 360.2	GND CON 119.6 336.4	CLNC DEL 254.4	ASR/ PAR
---------------	----------------------------	------------------------	------------------------	-------------------	-------------

CAUTION: Final approach course 72° from rwy cntrln at 3000' from thld.



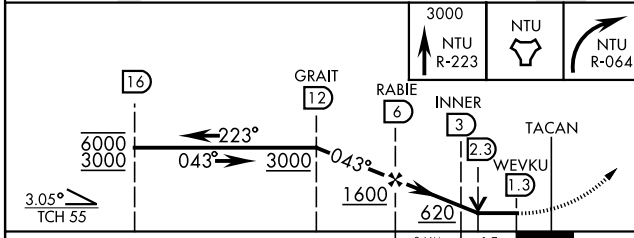
NE-3, 08 AUG 2024 TO 05 SEP 2024

NE-3, 08 AUG 2024 TO 05 SEP 2024

Knots	60	120	180	240	300	360
V/V(fpm)	210	420	630	840	1050	1260

Min climb of 210 ft/NM to 3000 - Controlling Obstacle Unk

EMERG SAFE ALT 100 NM 4100



CATEGORY	A	B	C	D
S-5R *	420-½	401 (400-½)	420-¾ 401 (400-¾)	
CIRCLING	500-1	478 (500-1)	600-1½ 578 (600-½)	600-2 578 (600-2)

ELEV 22	TDZE 19
---------	---------

Detailed diagram of the runway and taxiway layout, showing:

- Runway 5R (1000 x 150 ft).
- Runway 5L (1000 x 150 ft).
- Runway 12R (1000 x 150 ft).
- Runway 12L (1000 x 150 ft).
- Runway 15 (1000 x 150 ft).
- Runway 16 (1000 x 150 ft).
- Runway 17 (1000 x 150 ft).
- Runway 18 (1000 x 150 ft).
- Runway 19 (1000 x 150 ft).
- Runway 20 (1000 x 150 ft).
- Runway 21 (1000 x 150 ft).
- Runway 22 (1000 x 150 ft).
- Runway 23 (1000 x 150 ft).
- Runway 24 (1000 x 150 ft).
- Runway 25 (1000 x 150 ft).
- Runway 26 (1000 x 150 ft).
- Runway 27 (1000 x 150 ft).
- Runway 28 (1000 x 150 ft).
- Runway 29 (1000 x 150 ft).
- Runway 30 (1000 x 150 ft).
- Runway 31 (1000 x 150 ft).
- Runway 32 (1000 x 150 ft).
- Runway 33 (1000 x 150 ft).
- Runway 34 (1000 x 150 ft).
- Runway 35 (1000 x 150 ft).
- Runway 36 (1000 x 150 ft).
- Runway 37 (1000 x 150 ft).
- Runway 38 (1000 x 150 ft).
- Runway 39 (1000 x 150 ft).
- Runway 40 (1000 x 150 ft).
- Runway 41 (1000 x 150 ft).
- Runway 42 (1000 x 150 ft).
- Runway 43 (1000 x 150 ft).
- Runway 44 (1000 x 150 ft).
- Runway 45 (1000 x 150 ft).
- Runway 46 (1000 x 150 ft).
- Runway 47 (1000 x 150 ft).
- Runway 48 (1000 x 150 ft).
- Runway 49 (1000 x 150 ft).
- Runway 50 (1000 x 150 ft).
- Runway 51 (1000 x 150 ft).
- Runway 52 (1000 x 150 ft).
- Runway 53 (1000 x 150 ft).
- Runway 54 (1000 x 150 ft).
- Runway 55 (1000 x 150 ft).
- Runway 56 (1000 x 150 ft).
- Runway 57 (1000 x 150 ft).
- Runway 58 (1000 x 150 ft).
- Runway 59 (1000 x 150 ft).
- Runway 60 (1000 x 150 ft).

VIRGINIA BEACH, VIRGINIA 36° 49' N - 76° 02' W OCEANA NAS (APOLLO SOUCEK FLD) (KNTU)

Orig 27JAN22

TACAN Y RWY 5R

HIRL all rwy's
Wave-Off Lgt all rwy's