

WAAS CH <b>61399</b> <b>W10A</b>	APP CRS <b>108°</b>	Rwy Idg <b>6500</b> TDZE <b>337</b> Apt Elev <b>342</b>
--	------------------------	---

# RNAV (GPS) RWY 10

CAPE GIRARDEAU RGNL (CGI)

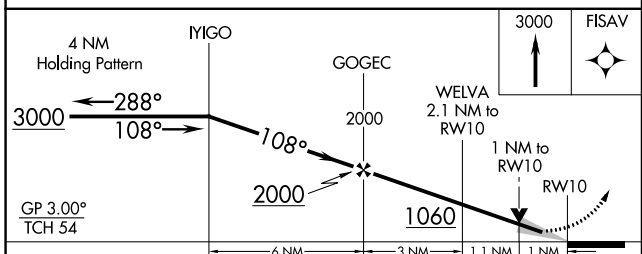
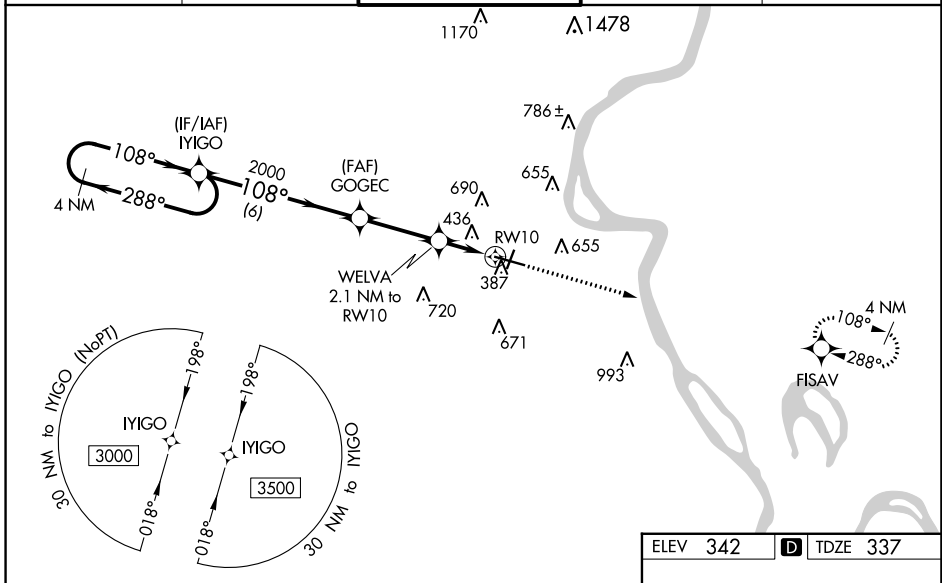
RNP APCH - GPS.

**⚠** For uncompensated Baro-VNAV systems, LNAV/VNAV NA below -17°C or above 54°C. When local altimeter setting not received, use Cairo altimeter setting and increase LPV DA to 585 feet, LNAV/VNAV DA to 761 feet, and all visibilities 1/8 SM. Increase all MDAs 60 feet and LNAV Cat C/D visibility 1/8 SM, and Circling Cats C/D visibility to 1/4 SM. Baro-VNAV and VDP NA when using Cairo Rgnl altimeter setting. For inop ALS, increase LNAV/VNAV visibility all Cats and LNAV visibility Cat C/D to 1 SM. For inop ALS, when using Cairo altimeter setting, increase LNAV/VNAV all Cats and LNAV Cat C/D visibility to 1 SM.

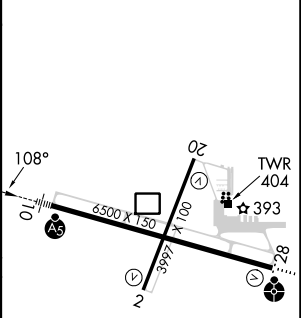


MISSED APPROACH:  
Climb to 3000 direct FISAV and hold.

ASOS <b>120.55</b>	MEMPHIS CENTER <b>133.65 292.15</b>	CAPE GIRARDEAU TOWER ★ <b>125.525 (CTAF)</b> <b>📻</b>	GND CON <b>124.7</b>	UNICOM <b>122.95</b>
-----------------------	--	--	-------------------------	-------------------------



ELEV 342	<b>D</b> TDZE 337
----------	-------------------



CATEGORY	A	B	C	D
LPV DA		537-1/2	200 (200-1/2)	
LNAV/VNAV DA		713-5/8	376 (400-5/8)	
LNAV MDA	700-1/2	363 (400-1/2)	700-5/8	363 (400-5/8)
<b>C</b> CIRCLING	880-1 538 (600-1)	960-1 618 (700-1)	1000-13/4 658 (700-13/4)	1080-21/4 738 (800-21/4)

MIRL Rwy 2-20 **📻**  
HIRL Rwy 10-28 **📻**

NC-3, 08 AUG 2024 to 05 SEP 2024

NC-3, 08 AUG 2024 to 05 SEP 2024