

WAAS CH <b>42832</b> W20A	APP CRS <b>203°</b>	Rwy Idg TDZE Apt Elev	<b>3997</b> <b>339</b> <b>342</b>
---------------------------------	------------------------	-----------------------------	---

## RNAV (GPS) RWY 20

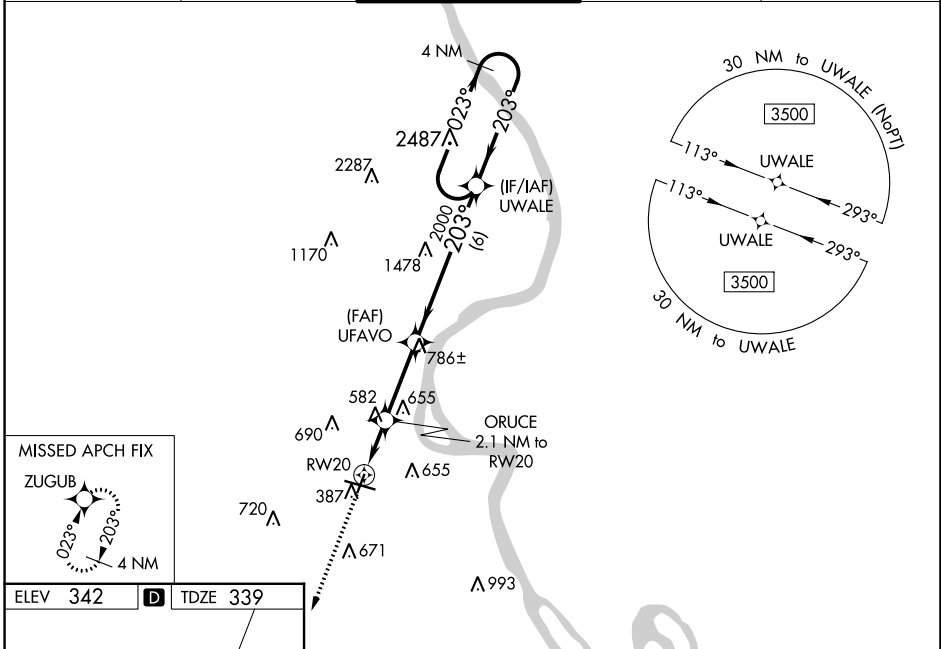
CAPE GIRARDEAU RGNL (CGI)

RNP APCH-GPS.

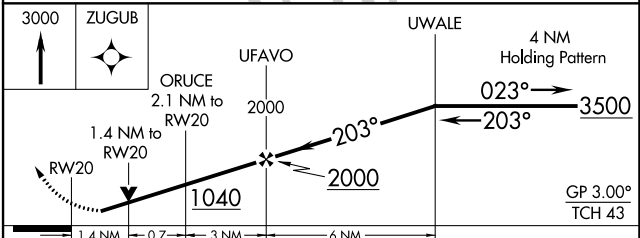
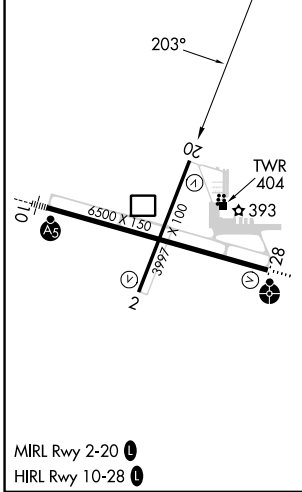
**▼** For uncompensated Baro-VNAV systems, LNAV/VNAV NA below -17°C or above 54°C.  
**▲** When local altimeter setting not received, use Cairo altimeter setting and increase LPV DA to 637 feet and all visibilities  $\frac{1}{8}$  SM; increase LNAV/VNAV DA to 652 feet; increase all MDAs 60 feet; increase LNAV and Circling visibility Cats C and D  $\frac{1}{4}$  SM. Rwy 20 helicopter visibility reduction below  $\frac{3}{4}$  SM NA. Baro-VNAV and VDP NA when using Cairo altimeter setting.

**MISSED APPROACH:** Climb to 3000 direct ZUGUB and hold.

ASOS <b>120.55</b>	MEMPHIS CENTER <b>133.65 292.15</b>	<b>CAPE GIRARDEAU TOWER * 125.525 (CTAF) 1</b>	GND CON <b>124.7</b>	UNICOM <b>122.95</b>
-----------------------	--	--	-------------------------	-------------------------



ELEV <b>342</b>	<b>D</b>	TDZE <b>339</b>
-----------------	----------	-----------------



CATEGORY	A	B	C	D
LPV DA		589-1	250 (300-1)	
LNAV/VNAV DA		604-1	265 (300-1)	
LNAV MDA	840-1	501 (500-1)	840- $\frac{1}{8}$	501 (500- $\frac{1}{8}$ )
<b>C</b> CIRCLING	860-1 518 (600-1)	960-1 618 (700-1)	1000- $\frac{3}{4}$ 658 (700- $\frac{1}{4}$ )	1080-2 $\frac{1}{4}$ 738 (800-2 $\frac{1}{4}$ )

NC-3, 08 AUG 2024 to 05 SEP 2024

NC-3, 08 AUG 2024 to 05 SEP 2024