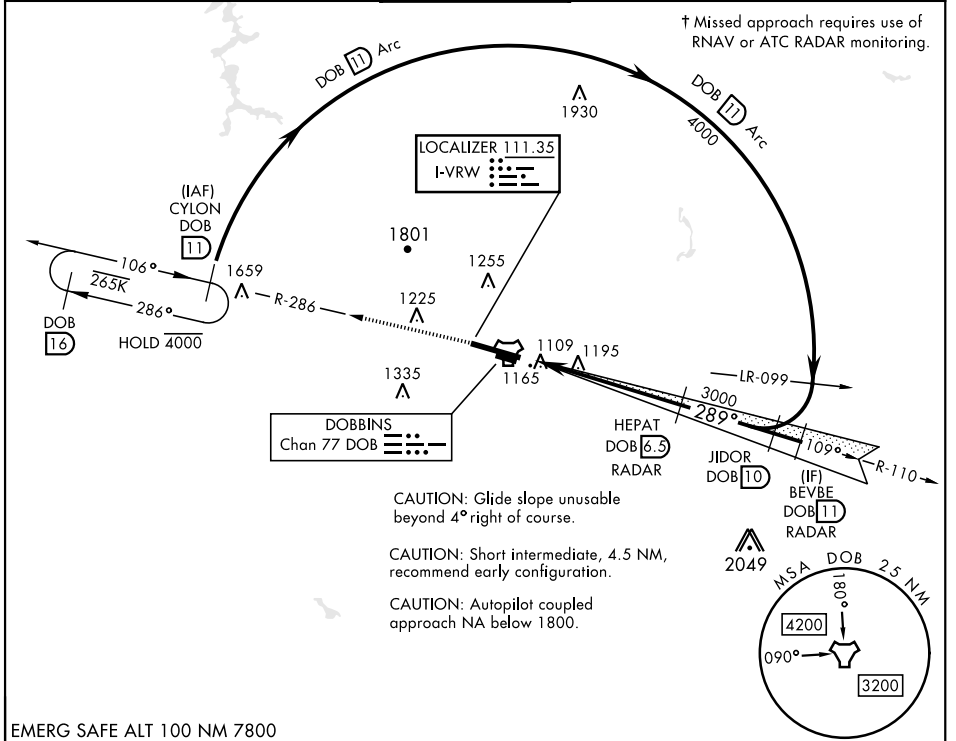


# ILS or LOC RWY 29

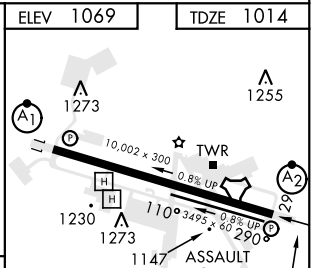
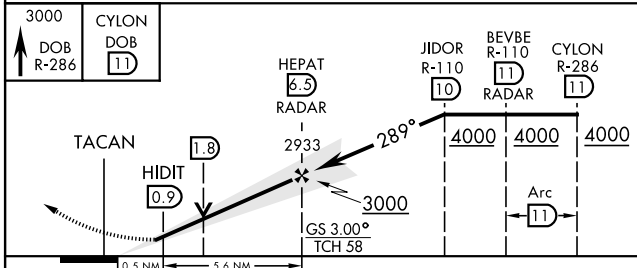
LOC I-VRW <b>111.35</b>	APCH CRS <b>289°</b>	Rwy Idg <b>10,002</b> TDZE <b>1014</b> Arprt Elev <b>1069</b>	[USAF]	DOBBINS ARB (KMGE)
----------------------------	-------------------------	---	--------	--------------------

TACAN or RADAR required. * When ALS inop, increase CAT AB RVR to 55 and vis to 1 mile, CAT CDE vis to 1 3/8 miles. ** Circling not authorized N of Rwy 11-29 for CAT DE aircraft. Circling to assault strip not authorized.	SALS A2	† MISSED APPROACH: Climb to 3000 on DOB TACAN R-286 to CYLON and hold.
---	------------	--

ATIS ★ <b>269.5</b>	ATLANTA APP CON <b>121.0 268.7</b>	TOWER ★ <b>120.75 370.875</b>	GND CON <b>125.3 275.8</b>	ASR
------------------------	---------------------------------------	----------------------------------	-------------------------------	-----



EMERG SAFE ALT 100 NM 7800



CATEGORY	A	B	C	D	E
S-ILS 29		1214/40	200	(200-3/4)	
S-LOC 29*	1520/40	506 (500-3/4)	1520-1 1/4	506 (500-1 1/4)	
** CIRCLING	1580-1 511 (600-1)	1620-1 551 (600-1)	1760-2 691 (700-2)	1760-2 1/4 691 (700-2 1/4)	1760-2 1/2 691 (700-2 1/2)

HIRL Rwy 11-29					
REIL Rwy 11 and 29					
FAF to MAP 5.5 NM					
Knots	60	90	120	150	180
Min:Sec	5:30	3:40	2:45	2:12	1:50

# ILS or LOC RWY 29

SE-4, 08 AUG 2024 to 05 SEP 2024

SE-4, 08 AUG 2024 to 05 SEP 2024