


MARIETTA, GEORGIA

RNAV (GPS) RWY 29

APCH CRS 289°	Rwy Idg 10,002
	TDZE 1014
	Arprt Elev 1069

- (USAF)

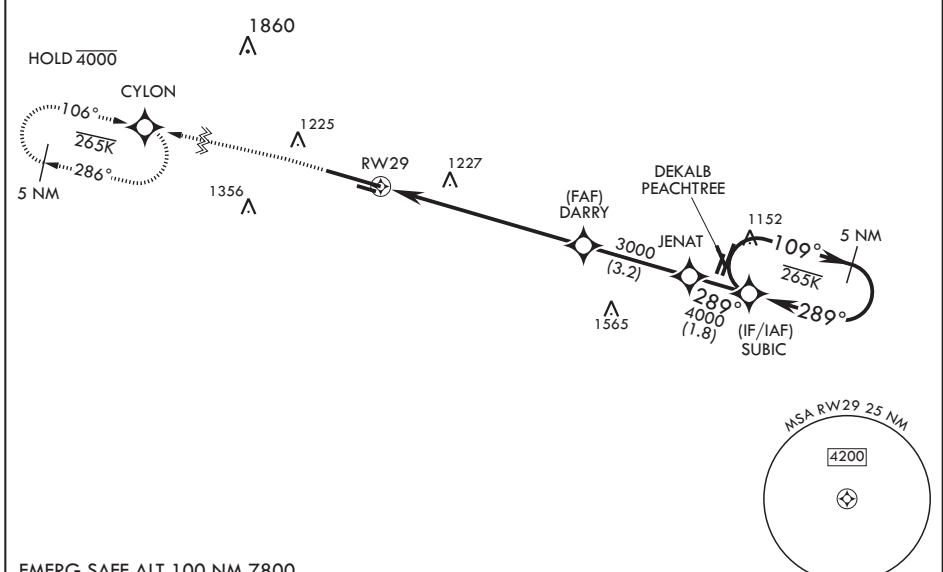
DOBBINS ARB (KMGE)

RNP APCH. DME/DME RNP- 0.3 NA	SALS 	MISSED APPROACH: Climb to 2000 then climbing left turn to 3000 direct CYLON and hold.
<p>▼ * When ALS inop, increase vis to 1 3/8 miles. ** When ALS inop, increase CAT AB RVR to 55 and vis to 1 mile, CAT CDE vis to 1 3/8 miles.</p>		

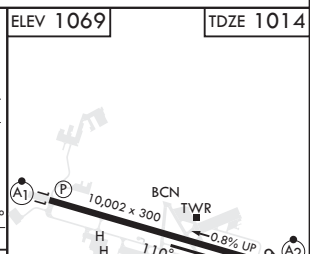
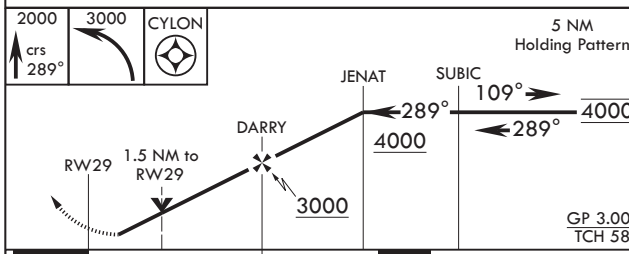
ATIS* 269.5	ATLANTA APP CON/DEP CON 121.0 268.7	TOWER* 120.75 370.875	GND CON 125.3 275.8	ASR
-----------------------	---	---------------------------------	-------------------------------	-----


*** Circling not authorized N of Rwy 11-29 for CAT DE. Circling to assault strip not authorized.

For uncompensated Baro-VNAV systems, LNAV/VNAV NA below -17°C or above 54°C.



EMERG SAFE ALT 100 NM 7800



CATEGORY	A	B	C	D	E
LNAV/VNAV DA*	1480/60		466	(500-1½)	
LNAV MDA**	1520/40	506 (500-¾)	1520-1¼	506	(500-1½)
 CIRCLING***	1580-1 511 (600-1)	1620-1 551 (600-1)	1760-2 691 (700-2)	1760-2¼ 691 (700-2¼)	1760-2½ 691 (700-2½)

HIRL all Rwys REIL Rwys 11, 29

MARIETTA, GEORGIA

33°55'N - 84°31'W

DOBBINS ARB (KMGE)

Amdt 3 11JUL24

RNAV (GPS) RWY 29

SE-4, 08 AUG 2024 to 05 SEP 2024

SE-4, 08 AUG 2024 to 05 SEP 2024