

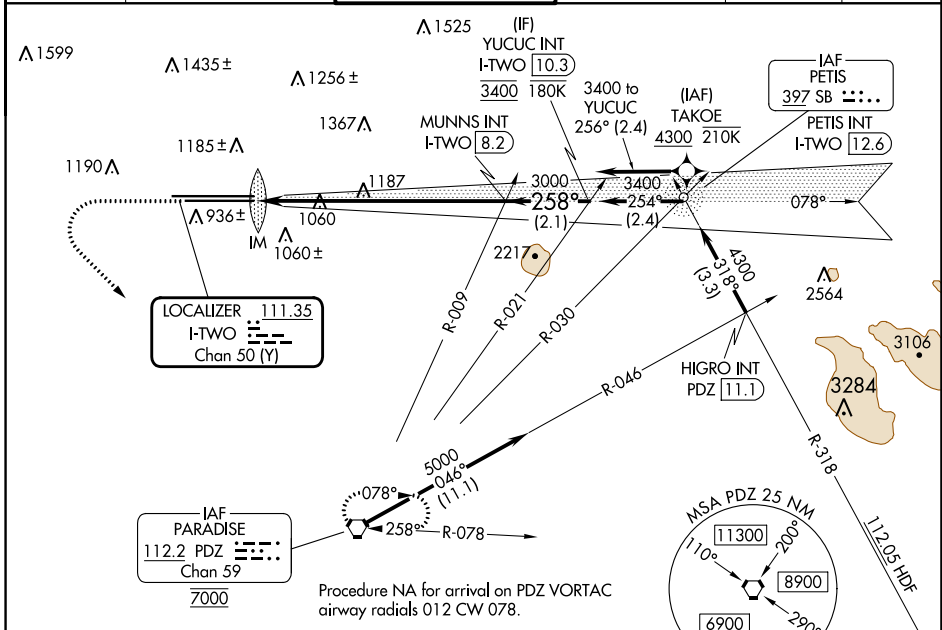
LOC/DME I-TWO <b>111.35</b> Chan <b>50(Y)</b>	APP CRS <b>258°</b>	Rwy Idg TDZE <b>10200</b> <b>926</b> Apt Elev <b>944</b>
---	------------------------	--

# ILS RWY 26L (CAT II & III)

ONTARIO INTL (ONT)

RNP APCH - GPS. From TAKOE.	ALSIF-2 	MISSED APPROACH: Climb to 2800 then climbing left turn to 5400 direct PDZ VORTAC and hold, continue climb-in-hold to 5400.
-----------------------------	-------------	--

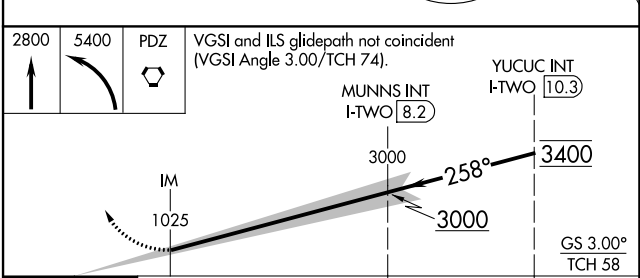
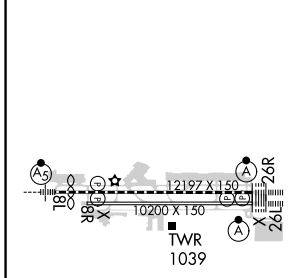
D-ATIS <b>124.25</b>	SOCAL APP CON <b>127.0 318.2</b>	ONTARIO TOWER <b>120.6 360.775</b>	GND CON <b>121.9 257.8</b>	CLNC DEL <b>132.9</b>	CPDLC
-------------------------	-------------------------------------	---------------------------------------	-------------------------------	--------------------------	-------



SW-3, 08 AUG 2024 to 05 SEP 2024

SW-3, 08 AUG 2024 to 05 SEP 2024

ELEV 944	<b>D</b>	TDZE 926
----------	----------	----------



1163'	6.3 NM	2.1 NM	
CATEGORY	A	B	C
S-ILS 26L	CAT II RA 103/12 100 DA 1026		
S-ILS 26L	CAT III RVR 06		

## CATEGORY II & III ILS - SPECIAL AIRCREW & AIRCRAFT CERTIFICATION REQUIRED