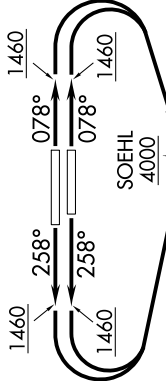
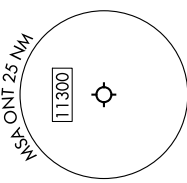


SW-3, 08 AUG 2024 to 05 SEP 2024

SOCAL DEP CON
135.4 377.125
D-ATIS
124.25
CINC DEL
132.9
GND CON
121.9 257.8
ONTARIO TOWER
120.6 360.775

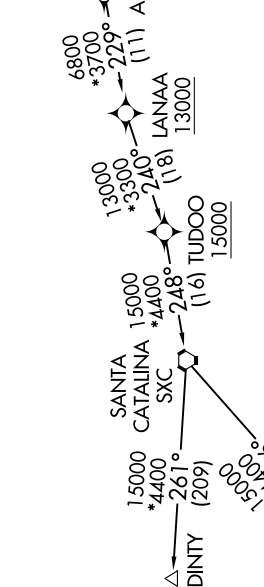
RNAV 1 - DME/DME/IRU or GPS: OTAY, MTBAL and AVRRY Transitions.
RNAV 1 - GPS: DINTY and MALIT Transitions.
RADAR required for non-GPS equipped aircraft.

**TOP ALTITUDE
DINTY AND MALIT TRANSITIONS:
15000**
**ALL OTHER TRANSITIONS:
ASSIGNED BY ATC**



NOTE: Parachute jumping and ultralight activities over L65, 14500' and below, north of track between ELLBO and ARRDY.

TAKEOFF MINIMUMS
Rwys 8L/R, 26L/R: Standard with minimum climb of 500'/NM to 1460.



NOTE: Turbopjet and turboprop aircraft only.
NOTE: MALIT and DINTY Transitions available between 2200 and 0600 local only.
NOTE: DINTY Transition ATC assigned only.

NOTE: Chart not to scale.

(CONTINUED ON FOLLOWING PAGE)

SW-3, 08 AUG 2024 to 05 SEP 2024