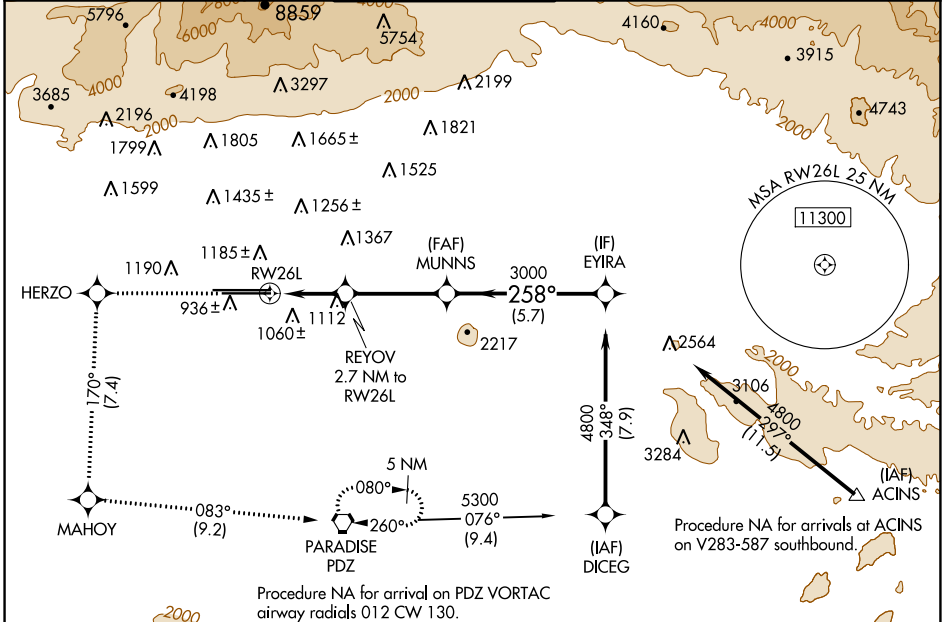


WAAS CH 90407 W26B	APP CRS 258°	Rwy Idg 10200 TDZE 926 Apt Elev 944
--	------------------------	--

RNAV (GPS) Y RWY 26L

ONTARIO INTL (ONT)

RNP APCH - GPS.		ALSF-2	MISSED APPROACH: Climb to 4700 direct HERZO and on track 170° to MAHOY and on track 083° to PDZ VORTAC, continue climb in hold to 4700.		
<p>▼ Circling NA north of Rwy 8L-26R. For uncompensated Baro-VNAV systems, procedure NA below 2°C or above 54°C. For inop ALS, increase all Cats LNAV/VNAV visibility to RVR 5500.</p>					
D-ATIS 124.25	SOCAL APP CON 127.0 318.2	ONTARIO TOWER 120.6 360.775	GND CON 121.9 257.8	CLNC DEL 132.9	CPDLC



SW-3, 08 AUG 2024 to 05 SEP 2024

SW-3, 08 AUG 2024 to 05 SEP 2024

ELEV 944	D	TDZE 926
-----------------	----------	-----------------

TDZ/CL Rwy 8L, 26L and 26R
HIRL Rwy 8L-26R and 8R-26L

4700	HERZO	MAHOY	PDZ	VGS and RNAV glidepath not coincident (VGS Angle 3.00/TCH 74).	
↑				MUNNNS	EYIRA
	tr 170°	tr 083°			
	REYOV 2.7 NM to RWY 26L		3000	258°	4800
	1.2 NM to RWY 26L	1.5 NM	1840	3000	GP 3.00° TCH 58
	1.2 NM	1.5 NM	3.6 NM	5.7 NM	
CATEGORY	A	B	C	D	
LPV DA		1126/18	200 (200-½)		
LNAV/VNAV DA		1267/30	341 (400-¾)		
LNAV MDA	1380/24	454 (500-½)	1380/45	454 (500-¾)	
C CIRCLING	1400-1	456 (500-1)	1500-1½	556 (600-1½)	1540-2
				596 (600-2)	