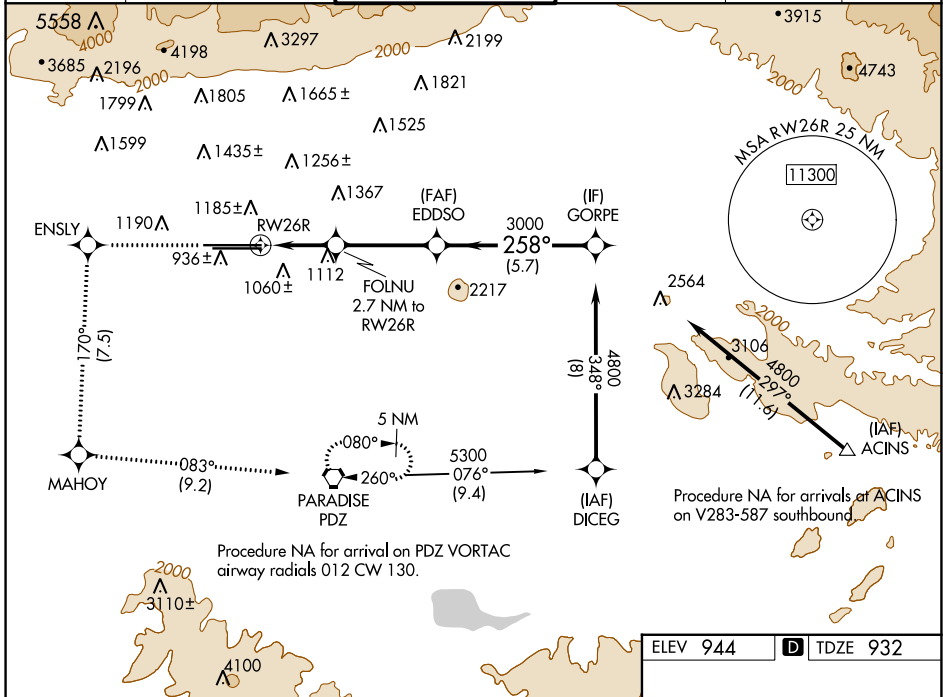


WAAS CH <b>53406</b> <b>W26A</b>	APP CRS <b>258°</b>	Rwy Idg <b>12197</b> TDZE <b>932</b> Apt Elev <b>944</b>
--	------------------------	--

# RNAV (GPS) Y RWY 26R

ONTARIO INTL (ONT)

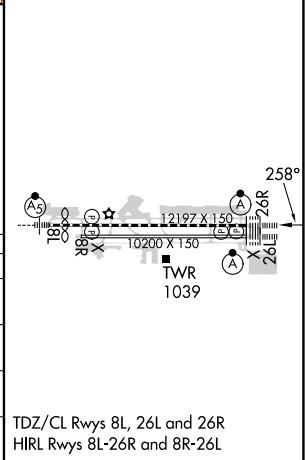
RNP APCH - GPS.		ALSIF-2	MISSED APPROACH: Climb to 4700 direct ENSLY and on track 170° to MAHOY and on track 083° to PDZ VORTAC and hold, continue climb-in-hold to 4700.					
▼ Circling NA north of Rwy 8L-26R. For uncompensated Baro-VNAV systems, procedure NA below 2°C or above 54°C.			D-ATIS <b>124.25</b>	SOCAL APP CON <b>127.0 318.2</b>	ONTARIO TOWER <b>120.6 360.775</b>	GND CON <b>121.9 257.8</b>	CLNC DEL <b>132.9</b>	CPDLC



SW-3, 08 AUG 2024 to 05 SEP 2024

SW-3, 08 AUG 2024 to 05 SEP 2024

ELEV 944	<b>D</b> TDZE 932
4700	↑
ENSLY tr 170° MAHOY tr 083° PDZ	VGS1 and RNAV glidepath not coincident (VGS1 Angle 3.00/TCH 75). EDDSO 3000 GORPE 4800
FOLNU 2.7 NM to RWY 26R RWY 26R 1.2 NM to RWY 26R	3000 258° 4800 GP 3.00° TCH 60
1.2 NM 1.5 NM 3.6 NM 5.7 NM	1840 3000
CATEGORY	A B C D
LPV DA	1132/18 200 (200-½)
LNAV/VNAV DA	1267/55 335 (400-1)
LNAV MDA	1380/24 448 (500-½) 1380/45 448 (500-¾)
<b>C</b> CIRCLING	1400-1 456 (500-1) 1500-1½ 556 (600-1½) 1540-2 596 (600-2)



TDZ/CL Rwys 8L, 26L and 26R  
HIRL Rwys 8L-26R and 8R-26L