

LOC I-OFK 111.5	APP CRS 014°	Rwy Idg 5801	TDZE 1573
		Apt Elev 1573	

ILS or LOC RWY 2

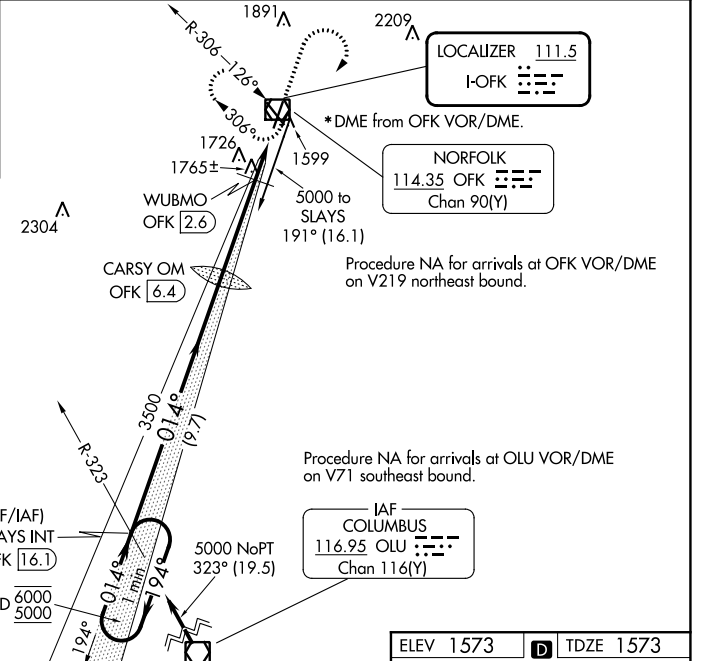
NORFOLK RGNL/KARL STEFAN MEML FLD (OFK)

<p>⚠ For inop ALS, increase S-LOC 2 Cat C/D visibility to 1½ SM.</p>	<p>MALS R</p>	<p>MISSED APPROACH: Climb to 3000 then climbing right turn to 4000 direct OFK VOR/DME and hold.</p>
---	---------------	---

ASOS 119.025	MINNEAPOLIS CENTER 125.025 235.625	UNICOM 122.7 (CTAF) 1
------------------------	--	---------------------------------

ALTERNATE MISSED APCH FIX

COLUMBUS OLU
116.95
Chan 116(Y)



2704 A

3304 A

WUBMO OFK [2.6]

CARSY OM OFK [6.4]

(IF/IAF) SLAYS INT OFK [16.1]

HOLD 6000/5000

5000 NoPT 323° (19.5)

3500 014° (9.7)

3300 014° (9.7)

194°

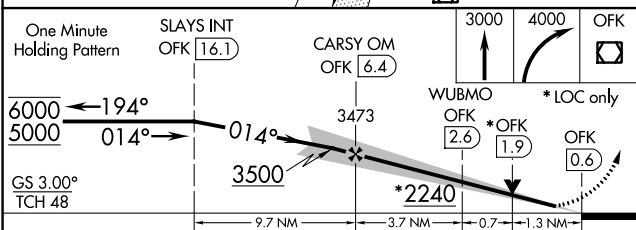
MSA OFK 25 NM

090°

360°

3800

4800



CATEGORY	A	B	C	D
S-ILS 2	1773-½ 200 (200-½)			
S-LOC 2	2240-½ 667 (700-½)		2240-1½ 667 (700-1½)	
C CIRCLING	2240-1 667 (700-1)		2260-2 687 (700-2) 2360-2½ 787 (800-2½)	
WUBMO FIX MINIMUMS (DME REQUIRED)				
S-LOC 2	2020-½ 447 (500-½)		2020-¾ 447 (500-¾)	
C CIRCLING	2080-1 507 (600-1) 2100-1 527 (600-1)		2260-2 687 (700-2) 2360-2½ 787 (800-2½)	

ELEV 1573 **D** TDZE 1573

0.425 UP

0.91

0.7

580 X 100

580 X 100

1598

HIRL Rwy 2-20 1

MIRL Rwy 14-32 1

REIL Rwys 20 and 32 1

014°

2

FAF to MAP 5.7 NM

Knots	60	90	120	150	180
Min:Sec	5:42	3:48	2:51	2:17	1:54

NC-2, 08 AUG 2024 to 05 SEP 2024

NC-2, 08 AUG 2024 to 05 SEP 2024

ILS or LOC RWY 2