

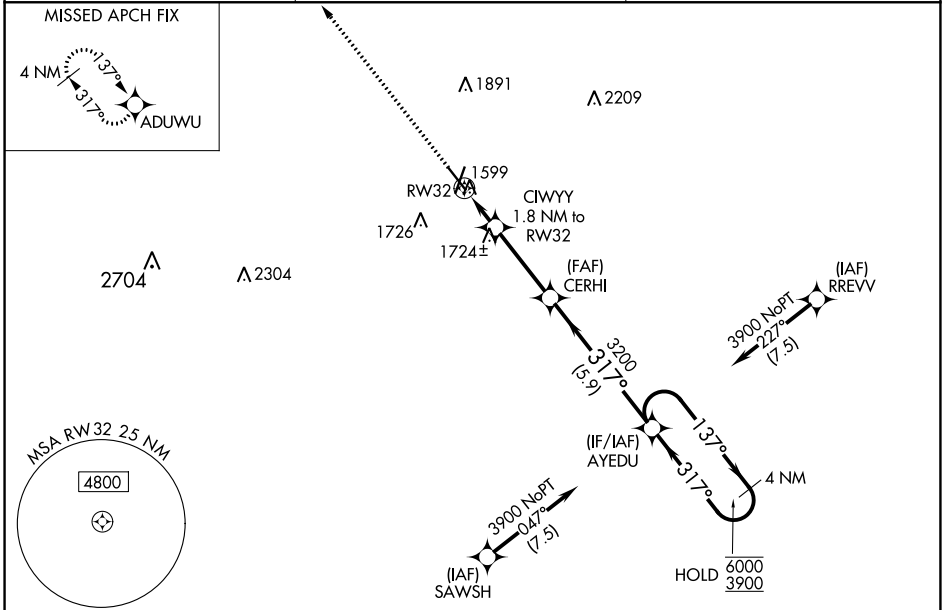
WAAS CH <b>86415</b> <b>W32A</b>	APP CRS <b>317°</b>	Rwy Idg TDZE Apt Elev	<b>5160</b> <b>1560</b> <b>1573</b>
--	------------------------	-----------------------------	---

# RNAV (GPS) RWY 32

NORFOLK RGNL/KARL STEFAN MEML FLD (OFK)

RNP APCH.	MISSED APPROACH: Climb to 3900 direct ADUWU and hold.
<p><b>▼</b> Rwy 32 helicopter visibility reduction below 3/4 SM NA.</p> <p><b>▲</b> For uncompensated Baro-VNAV systems, LNAV/VNAV NA below -22°C or above 54°C.</p>	

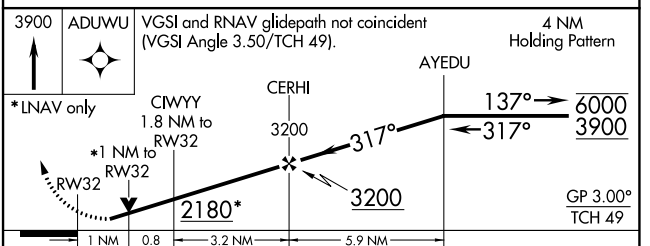
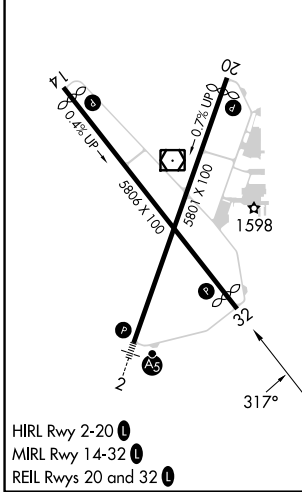
ASOS <b>119.025</b>	MINNEAPOLIS CENTER <b>125.025 235.625</b>	UNICOM <b>122.7 (CTAF) 0</b>
------------------------	--	---------------------------------



NC-2, 08 AUG 2024 to 05 SEP 2024

NC-2, 08 AUG 2024 to 05 SEP 2024

ELEV 1573	<b>D</b>	TDZE 1560
-----------	----------	-----------



CATEGORY	A	B	C	D
LPV DA	1858-1		298 (300-1)	
LNAV/VNAV DA	2019-1 <sup>3</sup> / <sub>8</sub>		459 (500-1 <sup>3</sup> / <sub>8</sub> )	
LNAV MDA	1980-1	420 (500-1)	1980-1 <sup>1</sup> / <sub>8</sub>	420 (500-1 <sup>1</sup> / <sub>8</sub> )
<b>C</b> CIRCLING	2060-1 487 (500-1)	2100-1 527 (600-1)	2260-2 687 (700-2)	2360-2 <sup>1</sup> / <sub>2</sub> 787 (800-2 <sup>1</sup> / <sub>2</sub> )