

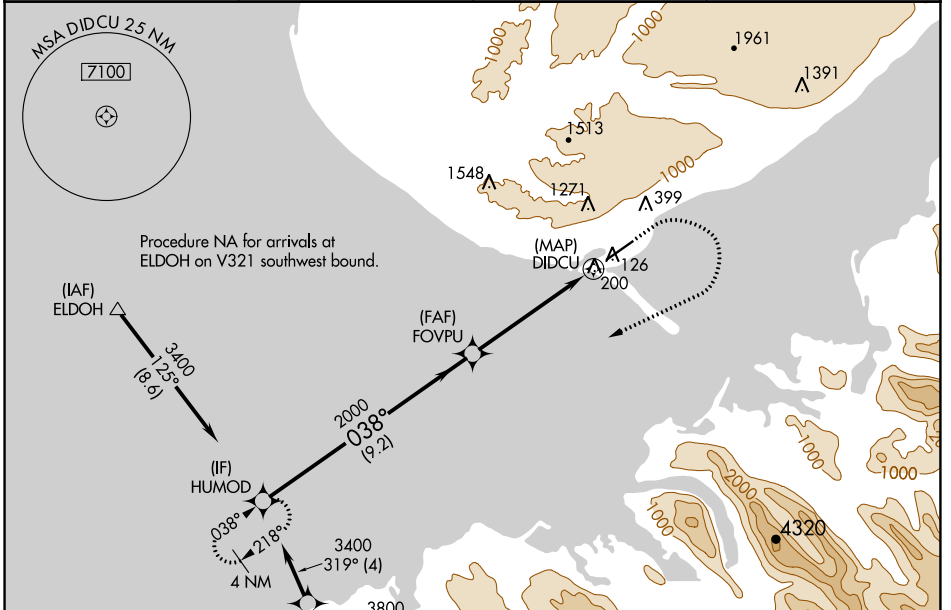
WAAS CH <b>86933</b> <b>W04B</b>	APP CRS <b>038°</b>	Rwy Idg TDZE Apt Elev	<b>6701</b> <b>78</b> <b>84</b>
--	------------------------	-----------------------------	---------------------------------------

# RNAV (GPS) Y RWY 4

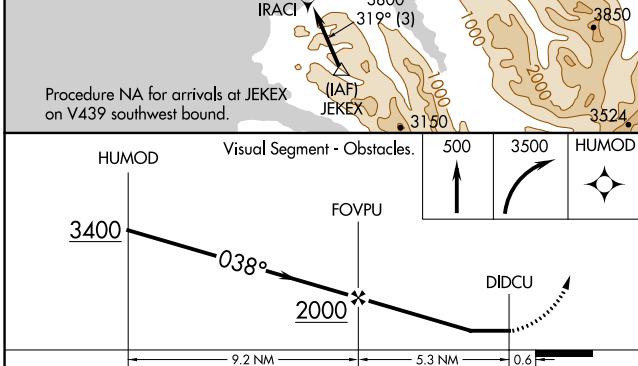
HOMER (HOM) (PAHO)

RNP APCH.	MALSF 	MISSED APPROACH: Climb to 500 then climbing right turn to 3500 direct HUMOD and hold.
<p> Circling NA northwest of Rwy 4-22. Inop table does not apply to LP and LNAV Cats A/B. Circling NA to waterways 6W and 24W. For inop ALS, increase LP Cat C/D visibility to 1 1/8 SM.</p>		

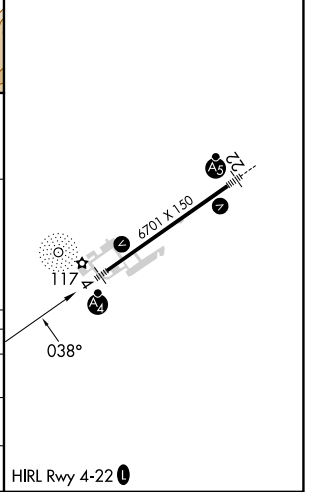
AFIS <b>135.65</b>	ANCHORAGE CENTER <b>125.9 270.3</b>	HOMER RADIO <b>123.6 (CTAF)</b>	UNICOM <b>122.7 123.0 123.05</b>
-----------------------	--	------------------------------------	-------------------------------------



ELEV 84	TDZE 78
---------	---------



CATEGORY	A	B	C	D
LP MDA	460-1 382 (400-1)			
LNAV MDA	760-1	682 (700-1)	760-1 3/4	682 (700-1 3/4)
CIRCLING	760-1	676 (700-1)	760-2 676 (700-2)	760-2 1/4 676 (700-2 1/4)



AK, 11 JUL 2024 to 05 SEP 2024

AK, 11 JUL 2024 to 05 SEP 2024