

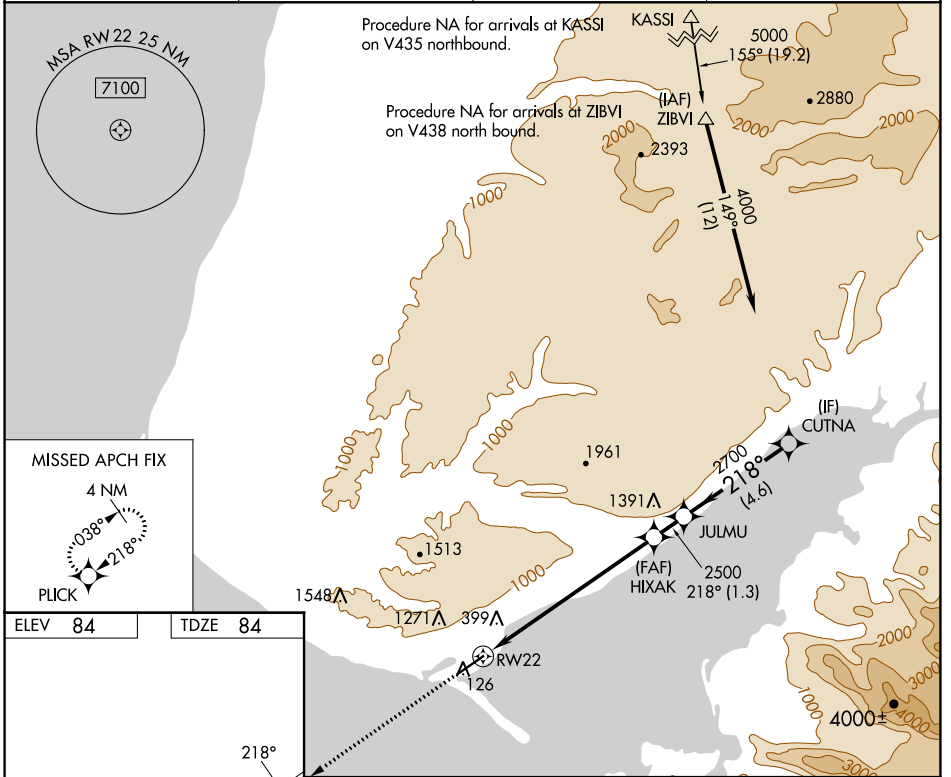
WAAS CH <b>82402</b> <b>W22A</b>	APP CRS <b>218°</b>	Rwy Idg TDZE Apt Elev	<b>6701</b> <b>84</b> <b>84</b>
--	------------------------	-----------------------------	---------------------------------------

# RNAV (GPS) Z RWY 22

HOMER (HOM) (PAHO)

RNP APCH. ▼ Helicopter visibility reduction below 3/4 SM NA. Inop table does not apply to LPV minimums. Baro-VNAV NA. When local altimeter setting not received, procedure NA. For inop ALS increase LNAV/VNAV all Cats visibility to 1 1/2 SM.	MALSR 	MISSED APPROACH: Climb to 2600 direct PLICK and hold.
--	-----------	---

AFIS <b>135.65</b>	ANCHORAGE CENTER <b>125.9 270.3</b>	HOMER RADIO <b>123.6 (CTAF) 0</b>	UNICOM <b>122.7 123.0 123.05</b>
-----------------------	--	--------------------------------------	-------------------------------------



AK, 11 JUL 2024 to 05 SEP 2024

AK, 11 JUL 2024 to 05 SEP 2024

ELEV 84	TDZE 84	MISSED APCH FIX 4 NM 218°			
		7.4 NM   1.3 NM   4.6 NM			
CATEGORY	A	B	C	D	
LPV DA		386-1	302 (400-1)		
LNAV/VNAV DA		731-1 1/2	647 (700-1 1/2)		