

20366

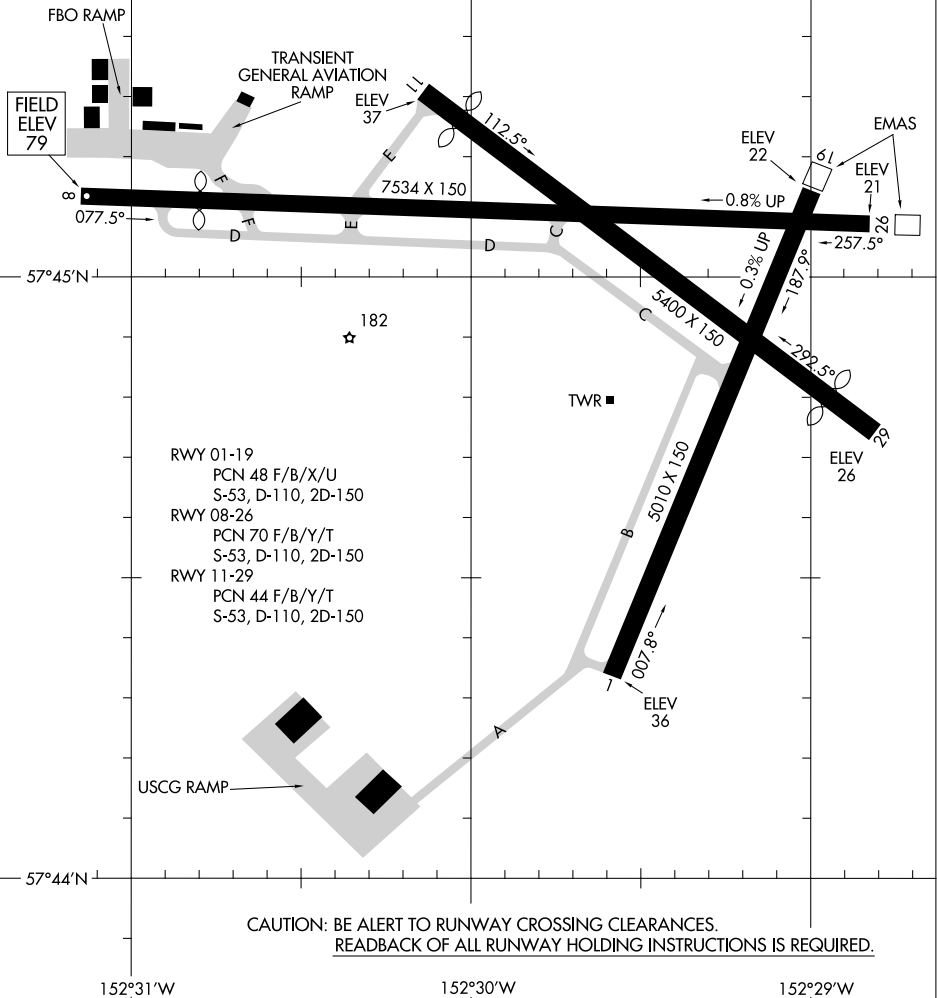
AIRPORT DIAGRAM

AL-1238 (FAA)

KODIAK (ADQ)(PADQ)
KODIAK, ALASKA

ATIS
 134.45
 KODIAK TOWER ★
 119.8 239.0
 GND CON
 121.9
D

VAR 14.5° E
 JANUARY 2020
 ANNUAL RATE OF CHANGE
 0.2° W



RWY 01-19
 PCN 48 F/B/X/U
 S-53, D-110, 2D-150
 RWY 08-26
 PCN 70 F/B/Y/T
 S-53, D-110, 2D-150
 RWY 11-29
 PCN 44 F/B/Y/T
 S-53, D-110, 2D-150

CAUTION: BE ALERT TO RUNWAY CROSSING CLEARANCES.
 READBACK OF ALL RUNWAY HOLDING INSTRUCTIONS IS REQUIRED.

152°31'W

152°30'W

152°29'W

AIRPORT DIAGRAM

20366

KODIAK, ALASKA
KODIAK (ADQ)(PADQ)

AK, 11 JUL 2024 to 05 SEP 2024

AK, 11 JUL 2024 to 05 SEP 2024