

FAIRBANKS, ALASKA

# RNAV (GPS) RWY 14

APCH CRS	Rwy Idg	14,530
140°	TDZE	537
	Arprt Elev	548

AL-1729 (USAF)

EIELSON AFB (PAEI)

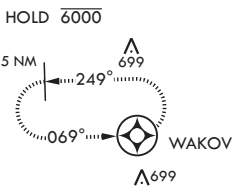
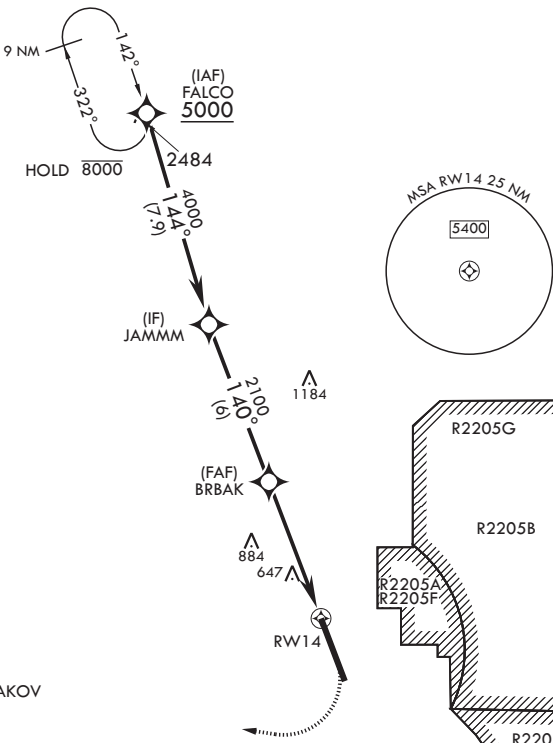
<p>⚠ * When ALS inop, increase RVR to 55 and vis to 1 mile. ** Circling not authorized E Rwy 14-32.</p>	<p>ALSF-1</p>	<p>MISSED APPROACH: Climb to 1100 then climbing right turn to 4000 direct WAKOV and hold, continue climb-in-hold to 4000.</p>
---	---------------	---

<p>ATIS* 119.9 273.5</p>	<p>FAIRBANKS APP CON 125.35 363.2 180°-359° 127.1 251.1 360°-179°</p>	<p>TOWER* 127.2 352.05</p>	<p>GND CON 121.8 275.8</p>	<p>CLNC DEL 343.7</p>
------------------------------	---	--------------------------------	--------------------------------	---------------------------

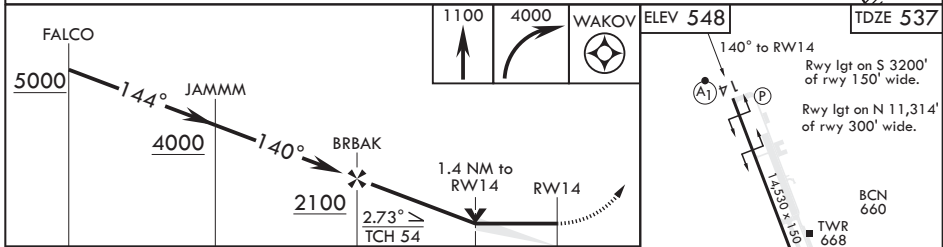
DME/DME RNP - 0.3 NA

CAUTION: CAT DE circling airspace not completely contained within controlled airspace. Uncontrolled airspace below 700' AGL outside EIL Class D.

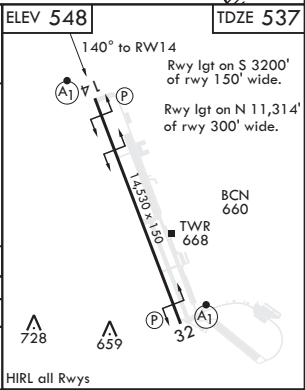
CAUTION: Holding not authorized at WAKOV unless approved by ATC.



EMERG SAFE ALT 100 NM 16,000



CATEGORY	A	B	C	D	E
LNVA MDA*	1000/24	463 (500-½)	1000/50	463	(500-1)
CIRCLING**	1000-1 452 (500-1)	1040-1 492 (500-1)	1040-1½ 492 (500-1½)	1280-2¼ 732 (800-2¼)	1280-2½ 732 (800-2½)



FAIRBANKS, ALASKA

64°40'N - 147°06'W

EIELSON AFB (PAEI)

Amdt 6 17JUN21  
TERPS

# RNAV (GPS) RWY 14

AK, 11 JUL 2024 to 05 SEP 2024

AK, 11 JUL 2024 to 05 SEP 2024