

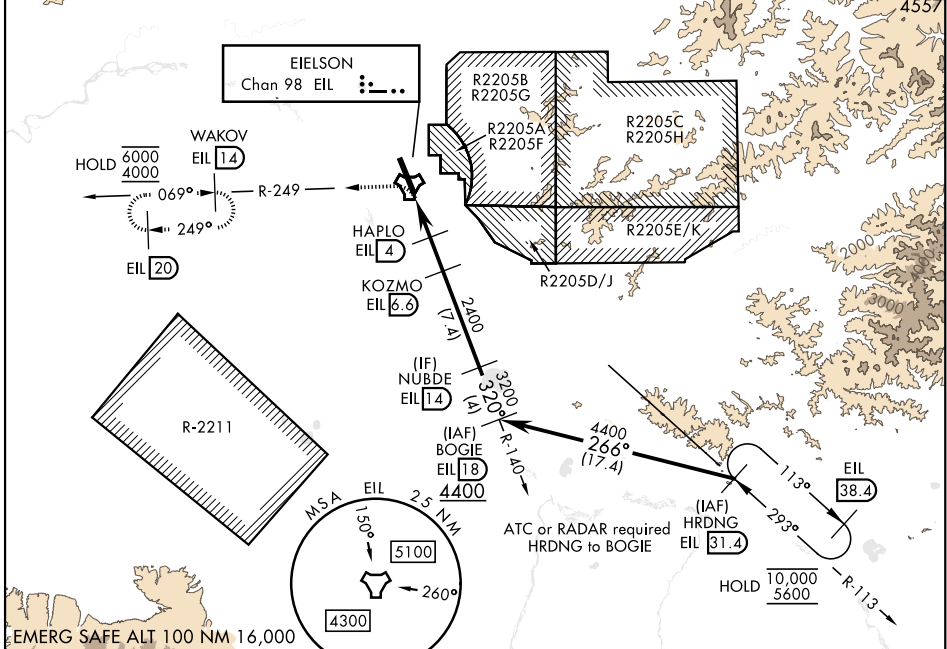
# TACAN Y RWY 32

TACAN EIL Chan 98	APCH CRS 320°	Rwy Ildg 14,530 TDZE 548 Arprt Elev 548	AL-1729 [USAF]	EIELSON AFB (PAEI)
----------------------	------------------	-----------------------------------------------	----------------	--------------------

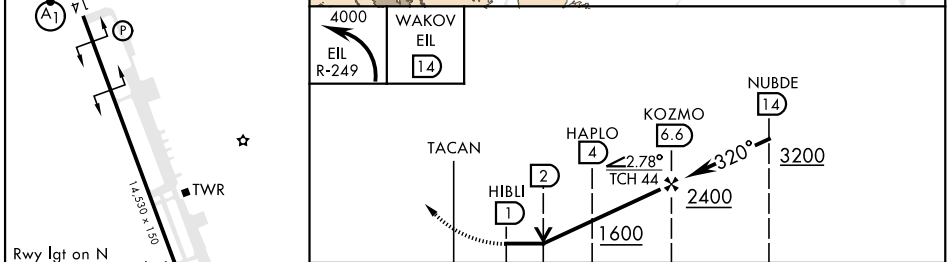
▼ \* When ALS inop., increase CAT AB RVR to 55, vis to 1 mile; CAT CDE vis to 1½ miles.  
 \*\* Circling not authorized E of Rwy 14-32.

ATIS ★ 119.9 273.5	FAIRBANKS APP CON 127.1 251.1 360° - 179° 125.35 363.2 180° - 359°	TOWER ★ 127.2 352.05	GND CON 121.8 275.8	CLNC DEL 343.7
-----------------------	--------------------------------------------------------------------------	-------------------------	------------------------	-------------------

Missed approach requires the use of RNAV or ATC RADAR monitoring.  
 CAUTION: Uncontrolled airspace below 700' AGL outside EIL CLASS D.



ELEV 548	TDZE 548
----------	----------



	A	B	C	D	E
CATEGORY	A	B	C	D	E
S-32*	1040/24 492 (500-½)		1040/50 492 (500-1)		
**			1040-1½	1280-2¼	1280-2½
☑ CIRCLING	1040-1 492 (500-1)		492 (500-1½)	732 (800-2¼)	732 (800-2½)

FAIRBANKS, ALASKA 64° 40' N - 147° 06' W EIELSON AFB (PAEI)

Orig 15JUN23

# TACAN Y RWY 32

AK, 11 JUL 2024 to 05 SEP 2024

AK, 11 JUL 2024 to 05 SEP 2024