

# TACAN Z RWY 32

TACAN EIL Chan <b>98</b>	APCH CRS <b>320°</b>	Rwy ldg <b>14,530</b> TDZE <b>548</b> Arpt Elev <b>548</b>
-----------------------------	-------------------------	--

AL-1729 [USAF]

EIELSON AFB (PAEI)

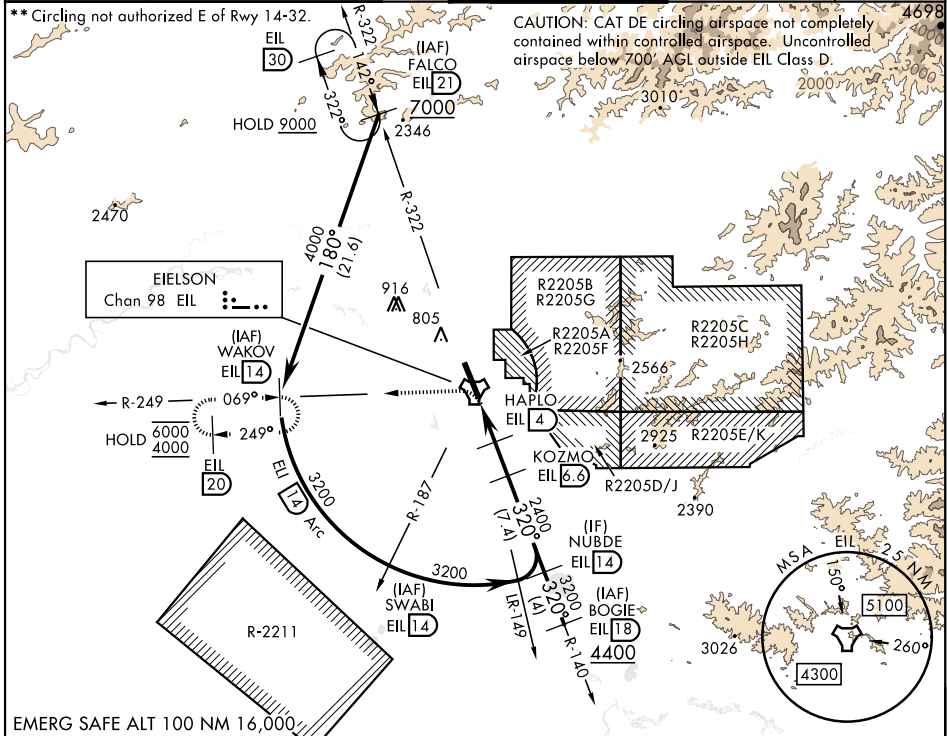
DME or RADAR required. RADAR required b/n FALCO-WAKOV.



MISSED APPROACH: Climbing left turn on EIL R-249 to 4000 to WAKOV and hold. Continue climb in hold.

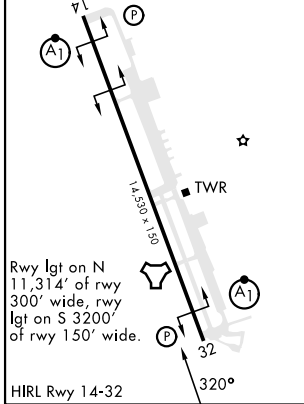
▼ \*When ALS inop, increase CAT AB RVR to 55, vis to 1 mile; CAT CDE vis to 1 1/8 mile.

ATIS ★ <b>119.9 273.5</b>	FAIRBANKS APP CON <b>127.1 251.1 360° - 179°</b> <b>125.35 363.2 180° - 359°</b>	TOWER ★ <b>127.2 352.05</b>	GND CON <b>121.8 275.8</b>	CLNC DEL <b>343.7</b>
------------------------------	--	--------------------------------	-------------------------------	--------------------------



EMERG SAFE ALT 100 NM 16,000

ELEV <b>548</b>	TDZE <b>548</b>
-----------------	-----------------



TACAN Z RWY 32

CATEGORY	A	B	C	D	E
S-32 *	1040/24 492 (500-1/2)		1040/50 492 (500-1)		
** CIRCLING	1040-1 492 (500-1)		1040-1 1/2 492 (500-1 1/2)	1280-2 1/4 732 (800-2 1/4)	1280-2 1/2 732 (800-2 1/2)

# TACAN Z RWY 32

AK, 11 JUL 2024 to 05 SEP 2024

AK, 11 JUL 2024 to 05 SEP 2024