

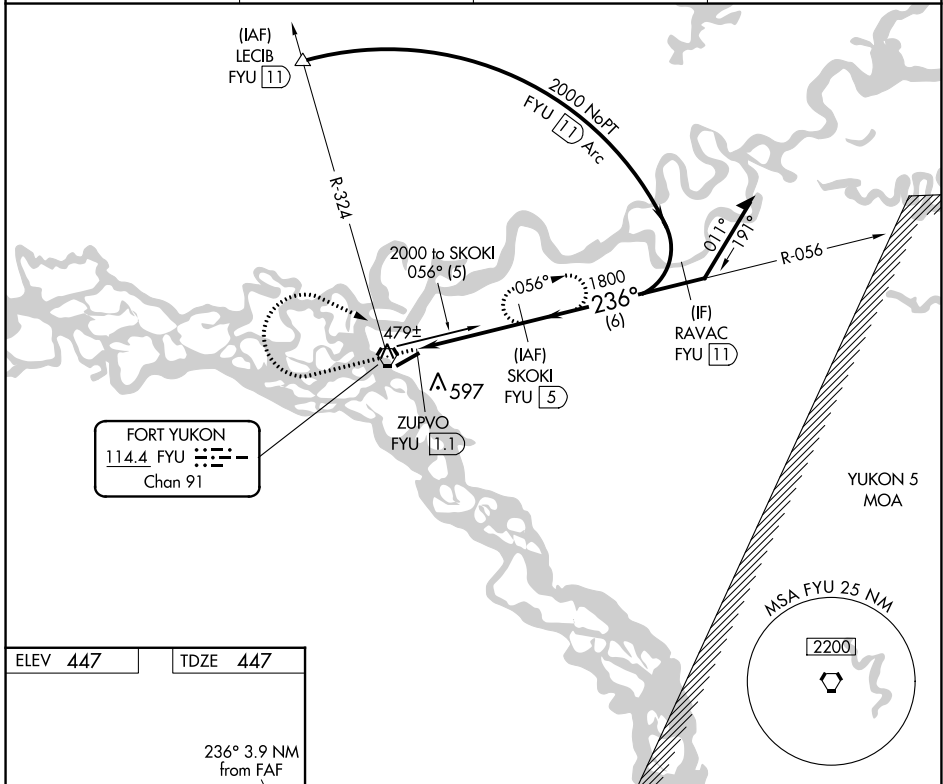
VORTAC FYU 114.4 Chan 91	APP CRS 236°	Rwy Idg 5000 TDZE 447 Apt Elev 447
--	------------------------	---

VOR/DME or TACAN RWY 22

FORT YUKON (FYU) (PFYU)

Inop table does not apply. Circling NA southeast of Rwy 4-22. Rwy 22 Straight-In and Circling minimums NA at night. Helicopter visibility reduction below 1 SM NA.		MISSED APPROACH: Climb to 2000 then right turn on heading 100° and FYU VORTAC R-056 to SKOKI/5 DME and hold.
--	--	---

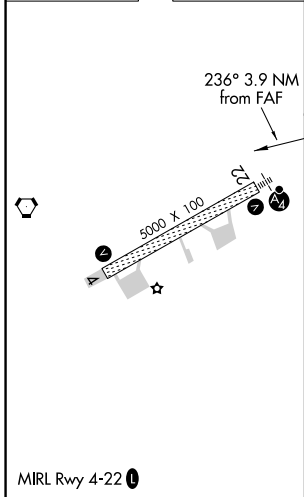
AWOS-3P 125.8	ANCHORAGE CENTER 135.0 225.4	FAIRBANKS RADIO 122.05	CTAF 122.5
-------------------------	--	----------------------------------	----------------------



AK, 11 JUL 2024 to 05 SEP 2024

AK, 11 JUL 2024 to 05 SEP 2024

ELEV 447	TDZE 447
-----------------	-----------------



2000	FYU R-056	SKOKI FYU (5)	SKOKI FYU (5)	VGSI and descent angles not coincident (VGSI Angle 3.00/TCH 27).
↑	hdg 100°			Remain within 10 NM
	ZUPVO FYU (1.1)	≤3.14° TCH 45	1800	056°
				236°
				2000
				3.9 NM
CATEGORY	A	B	C	D
S-22	960-1	513 (600-1)	960-1 $\frac{3}{8}$	513 (600-1 $\frac{3}{8}$)
CIRCLING	960-1	513 (600-1)	960-1 $\frac{1}{2}$	1000-2
			513 (600-1 $\frac{1}{2}$)	553 (600-2)