

LOC/DME I-OTZ 110.7 Chan 44	APP CRS 089°	Rwy Idg TDZE Apt Elev	5900 13 15
---	------------------------	-----------------------------	---------------------------------------

ILS or LOC RWY 9

RALPH WIEN MEML (OTZ) (PAOT)

DME required.

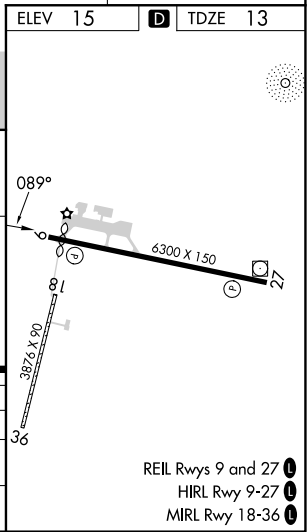
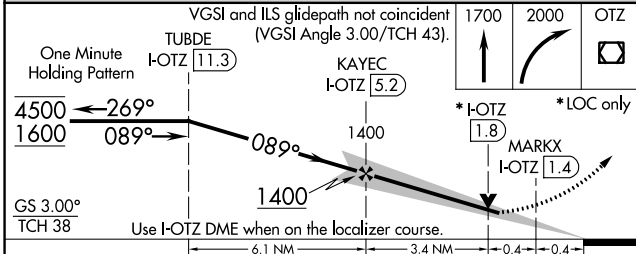
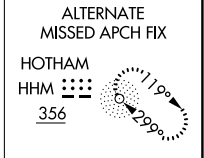
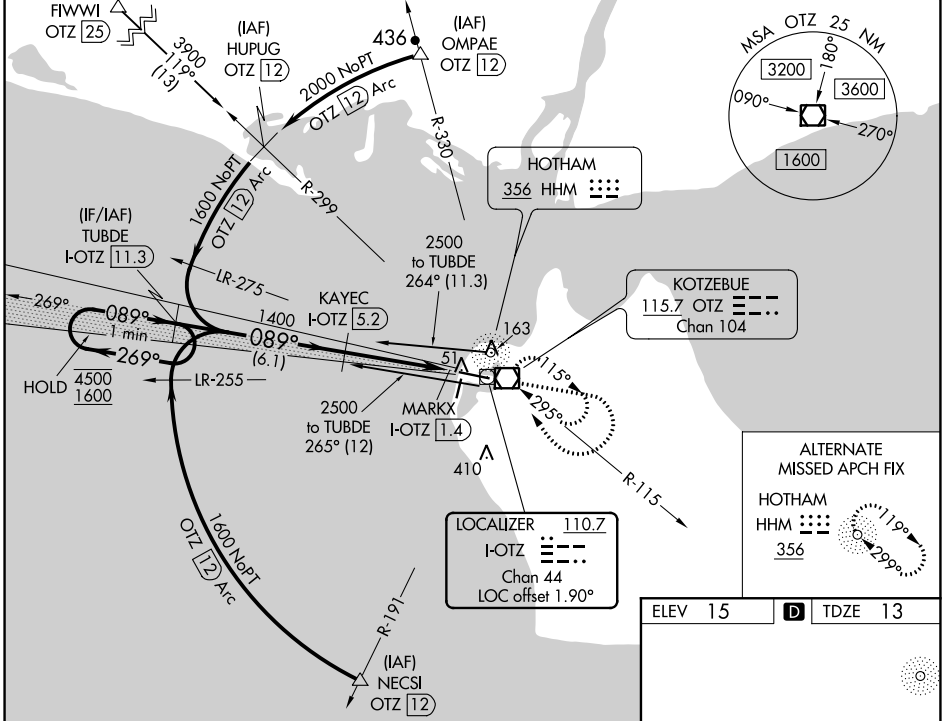
⚠ Circling Rwy 18, 36 NA at night, Circling Rwy 27 at night, operational VGSI required, remain on or above VGSI glidepath until threshold. Rwy 9 helicopter visibility reduction below RVR 4000 NA.

MISSED APPROACH: Climb to 1700 then climbing right turn to 2000 direct OTZ VOR/DME and hold, continue climb-in-hold to 2000.

AFIS
135.45

ANCHORAGE CENTER
119.2 263.0

KOTZEBUE RADIO
123.6 (CTAF) 0



CATEGORY	A	B	C	D
S-ILS 9	263/50		250 (300-1)	
S-LOC 9	320/55	307 (400-1)		320/50 307 (400-1)
C CIRCLING	520-1	505 (600-1)		720-2 720-2¼ 705 (800-2) 705 (800-2¼)

AK, 11 JUL 2024 to 05 SEP 2024

AK, 11 JUL 2024 to 05 SEP 2024