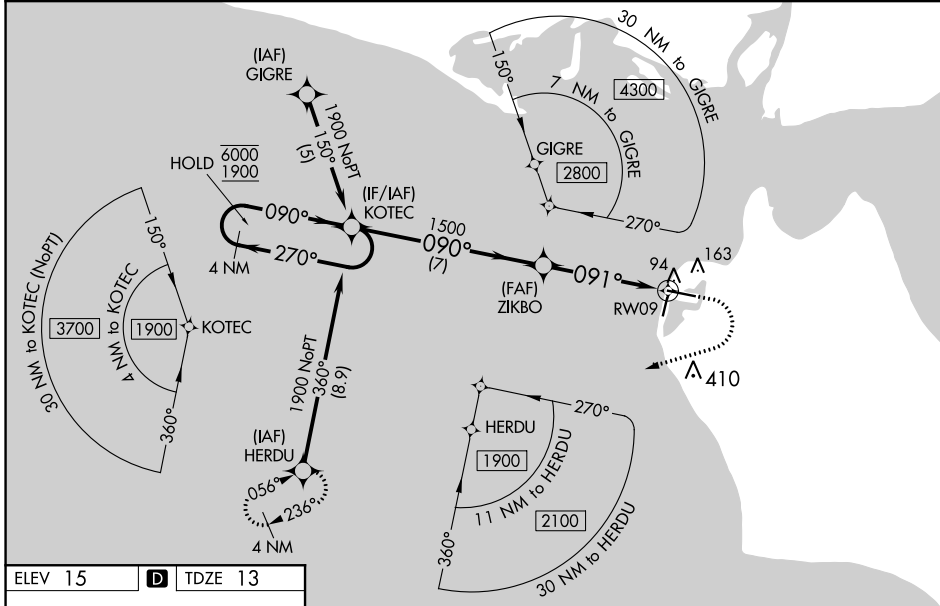


WAAS CH 57941 W09A	APP CRS 091°	Rwy Idg TDZE Apt Elev	5900 13 15
--	------------------------	-----------------------------	---------------------------------------

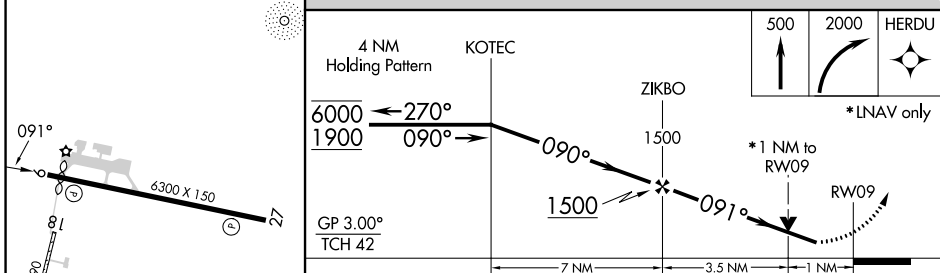
RNAV (GPS) RWY 9
RALPH WIEN MEML (OTZ) (PAOT)

RNP APCH.	<p>MISSED APPROACH: Climb to 500 then climbing right turn to 2000 direct HERDU and hold.</p>
<p>⚠ Circling Rwy 18, 36 NA at night, Circling Rwy 27 at night, operational VGSi required, remain on or above VGSi glidepath until threshold. Rwy 9 helicopter visibility reduction below RVR 4000 NA. For uncompensated Baro-VNAV systems, LNAV/VNAV NA below -20°C or above 54°C.</p>	

AFIS 135.45	ANCHORAGE CENTER 119.2 263.0	KOTZEBUE RADIO 123.6 (CTAF) 0
-----------------------	--	---



ELEV 15	D	TDZE 13
---------	----------	---------



CATEGORY	A	B	C	D
LPV DA		263/50	250 (300-1)	
LNAV/VNAV DA		263/50	250 (300-1)	
LNAV MDA		360/55	347 (400-1)	
C CIRCLING	520-1	505 (600-1)	720-2 705 (800-2)	720-2¼ 705 (800-2¼)

AK, 11 JUL 2024 to 05 SEP 2024

AK, 11 JUL 2024 to 05 SEP 2024