

| | | |
|--|------------------------|--|
| VOR/DME OTZ 115.7 Chan 104 | APP CRS 257° | Rwy Idg 5900 TDZE 15 Apt Elev 15 |
|--|------------------------|--|

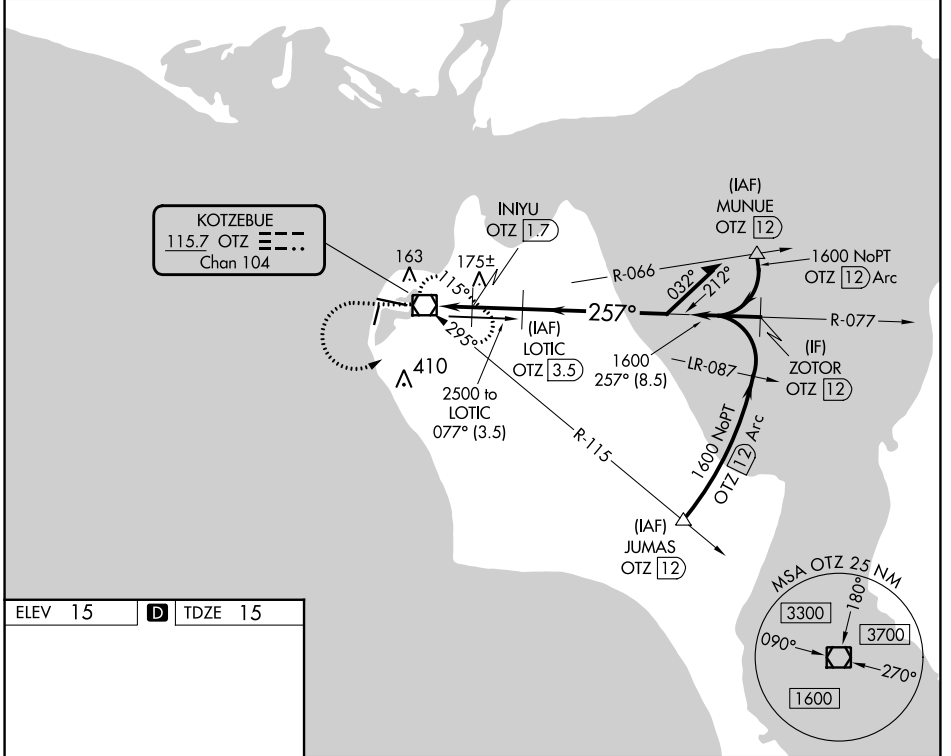
VOR RWY 27
RALPH WIEN MEML (OTZ) (PAOT)

DME required.

▼ Circling to Rwy 18, 36 NA at night. Rwy 27 helicopter visibility reduction below 1 SM NA. Straight-in Rwy 27 at night, Circling Rwy 27 at night, operational VGSI required, remain on or above glidepath until threshold.

MISSED APPROACH: Climb to 1600 then climbing left turn to 2000 direct OTZ VOR/DME and hold, continue climb-in-hold to 2000.

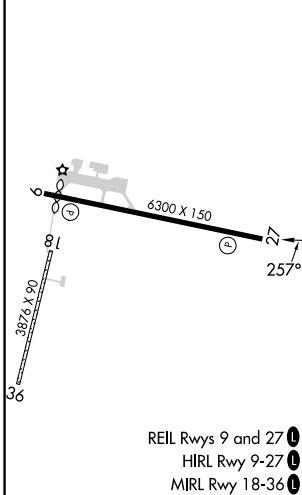
| | | |
|-----------------------|--|---|
| AFIS 135.45 | ANCHORAGE CENTER 119.2 263.0 | KOTZEBUE RADIO 123.6 (CTAF) 0 |
|-----------------------|--|---|



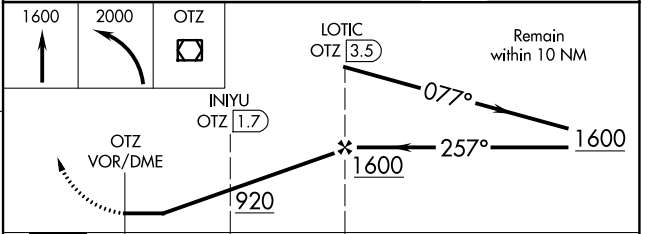
AK, 11 JUL 2024 to 05 SEP 2024

AK, 11 JUL 2024 to 05 SEP 2024

| | |
|---------|------------------|
| ELEV 15 | D TDZE 15 |
|---------|------------------|



- REIL Rwys 9 and 27 **0**
- HIRL Rwy 9-27 **0**
- MIRL Rwy 18-36 **0**
- 0** CIRCLING



| CATEGORY | A | B | C | D |
|-------------------|-------|-------------|--------|------------------------|
| S-27 | 440-1 | 425 (500-1) | 440-1¼ | 425 (500-1¼) |
| 0 CIRCLING | 520-1 | 505 (600-1) | 720-2 | 720-2¼ 705 (800-2¼) |