

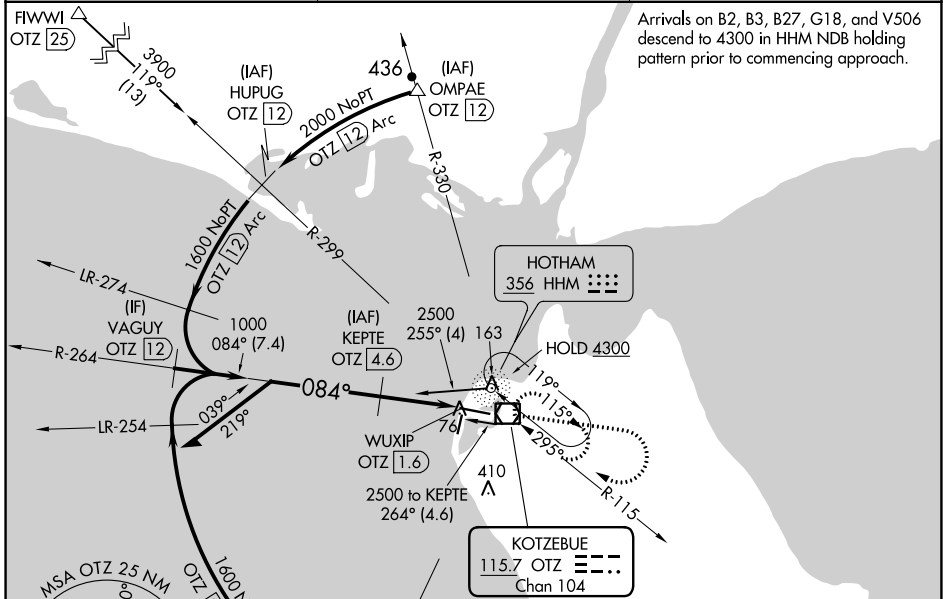
VOR/DME OTZ	APP CRS	Rwy ldg	5900
115.7	084°	TDZE	13
Chan 104		Apt Elev	15

VOR RWY 9

RALPH WIEN MEML (OTZ) (PAOT)

DME required.	MISSED APPROACH: Climb to 1500 then climbing right turn to 2000 direct OTZ VOR/DME and hold, continue climb-in-hold to 2000.
<p>▼ Circling Rwy 18, 36 NA at night, Circling Rwy 27 at night, operational VGSI required, remain on or above VGSI glidepath until threshold. Rwy 9 helicopter visibility reduction below RVR 4000 NA.</p>	

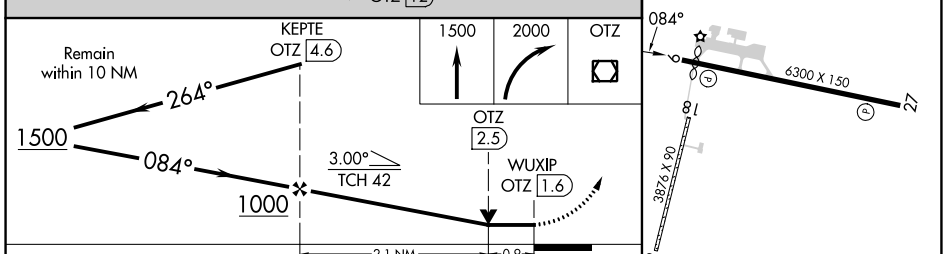
AFIS 135.45	ANCHORAGE CENTER 119.2 263.0	KOTZEBUE RADIO 123.6 (CTAF) 0
-----------------------	--	---



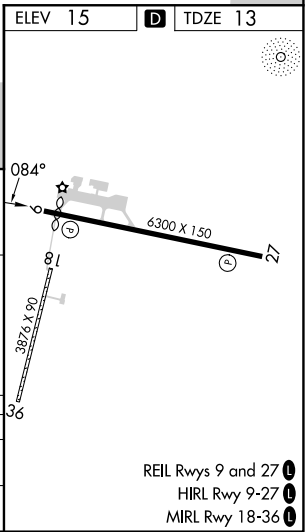
Arrivals on B2, B3, B27, G18, and V506 descend to 4300 in HHM NDB holding pattern prior to commencing approach.

AK, 11 JUL 2024 to 05 SEP 2024

AK, 11 JUL 2024 to 05 SEP 2024



CATEGORY	A	B	C	D
S-9	340/55 327 (400-1)		340/50 327 (400-1)	
C CIRCLING	520-1 505 (600-1)		720-2 705 (800-2)	720-2 1/4 705 (800-2 1/4)



- REIL Rwy 9 and 27 **0**
- HIRL Rwy 9-27 **0**
- MIRL Rwy 18-36 **0**

VOR RWY 9