

RNAV (GPS) RWY 23

APCH CRS	Rwy Idg	5018
230°	TDZE	34
	Arprt Elev	41

AL-3214 [USA]

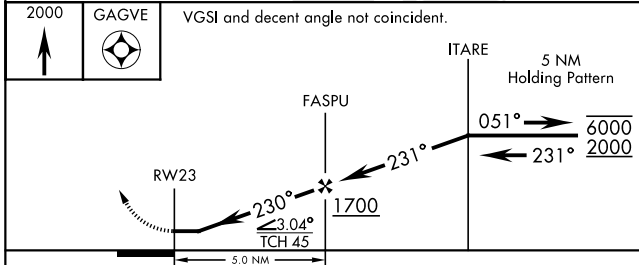
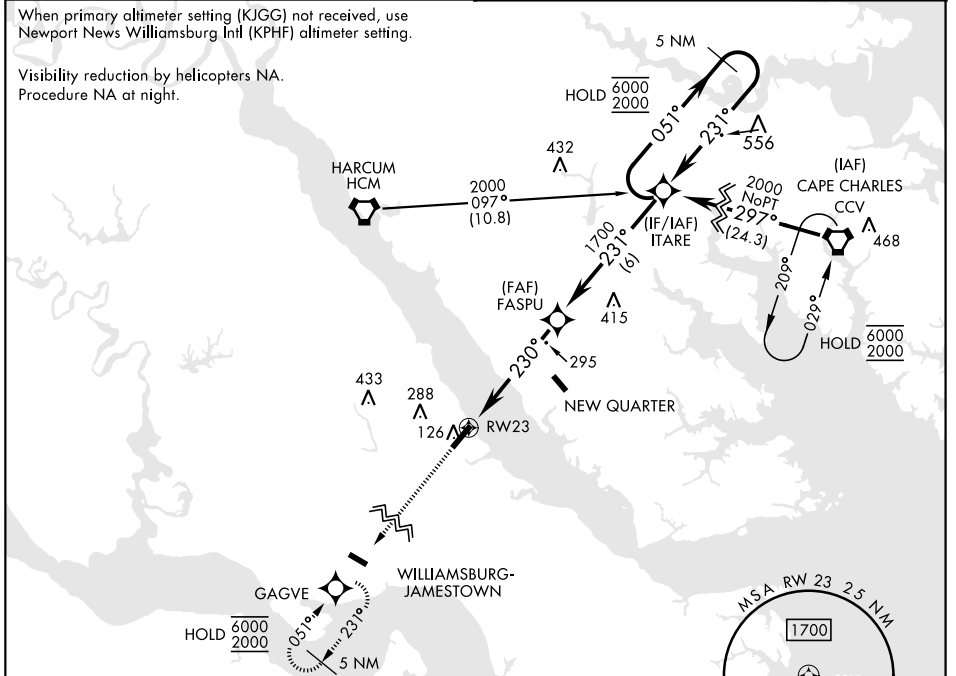
CAMP PEARY LNDG STRIP (KW94)

RNP APCH - GPS
 ▼ Restricted airfield, PPR. Contact Camp Peary Ops prior to landing.
 Williamsburg Jamestown (KJGG) Primary altimeter setting.

MISSED APPROACH: Climb to 2000 direct GAGVE and hold.

WILLIAMSBURG-JAMESTOWN AWOS-3
120.625

NORFOLK APP CON
125.7 335.625



ELEV	41	TDZE	34																														
<table border="1"> <tr> <th>CATEGORY</th> <th>A</th> <th>B</th> <th>C</th> <th>D</th> </tr> <tr> <td>LNVA MDA</td> <td>560-1</td> <td>526 (600-1)</td> <td>560-1½</td> <td>526 (600-1½)</td> </tr> <tr> <td> CIRCLING</td> <td>560-1 519 (600-1)</td> <td>620-1 579 (600-1)</td> <td>620-1½ 579 (600-1½)</td> <td>760-2¼ 719 (800-2¼)</td> </tr> <tr> <td colspan="5">NEWPORT NEWS / WILLIAMSBURG INTL ALTIMETER SETTING MINIMUMS</td> </tr> <tr> <td>LNVA MDA</td> <td>580-1</td> <td>546 (600-1)</td> <td>580-1½</td> <td>546 (600-1½)</td> </tr> <tr> <td> CIRCLING</td> <td>580-1 539 (600-1)</td> <td>620-1 579 (600-1)</td> <td>620-1½ 579 (600-1½)</td> <td>780-2¼ 739 (800-2¼)</td> </tr> </table>				CATEGORY	A	B	C	D	LNVA MDA	560-1	526 (600-1)	560-1½	526 (600-1½)	CIRCLING	560-1 519 (600-1)	620-1 579 (600-1)	620-1½ 579 (600-1½)	760-2¼ 719 (800-2¼)	NEWPORT NEWS / WILLIAMSBURG INTL ALTIMETER SETTING MINIMUMS					LNVA MDA	580-1	546 (600-1)	580-1½	546 (600-1½)	CIRCLING	580-1 539 (600-1)	620-1 579 (600-1)	620-1½ 579 (600-1½)	780-2¼ 739 (800-2¼)
CATEGORY	A	B	C	D																													
LNVA MDA	560-1	526 (600-1)	560-1½	526 (600-1½)																													
CIRCLING	560-1 519 (600-1)	620-1 579 (600-1)	620-1½ 579 (600-1½)	760-2¼ 719 (800-2¼)																													
NEWPORT NEWS / WILLIAMSBURG INTL ALTIMETER SETTING MINIMUMS																																	
LNVA MDA	580-1	546 (600-1)	580-1½	546 (600-1½)																													
CIRCLING	580-1 539 (600-1)	620-1 579 (600-1)	620-1½ 579 (600-1½)	780-2¼ 739 (800-2¼)																													
LIRL Rwy 5-23 REIL Rwy 5, 23																																	

RNAV (GPS) RWY 23

NE-3, 08 AUG 2024 to 05 SEP 2024

NE-3, 08 AUG 2024 to 05 SEP 2024