

WILLIAMSBURG, VIRGINIA

RNAV (GPS) RWY 5

APCH CRS	Rwy Idg	5018
050°	TDZE	41
	Arpt Elev	41

AL-3214 [USA]

CAMP PEARY LNDG STRIP (KW94)

RNP APCH - GPS

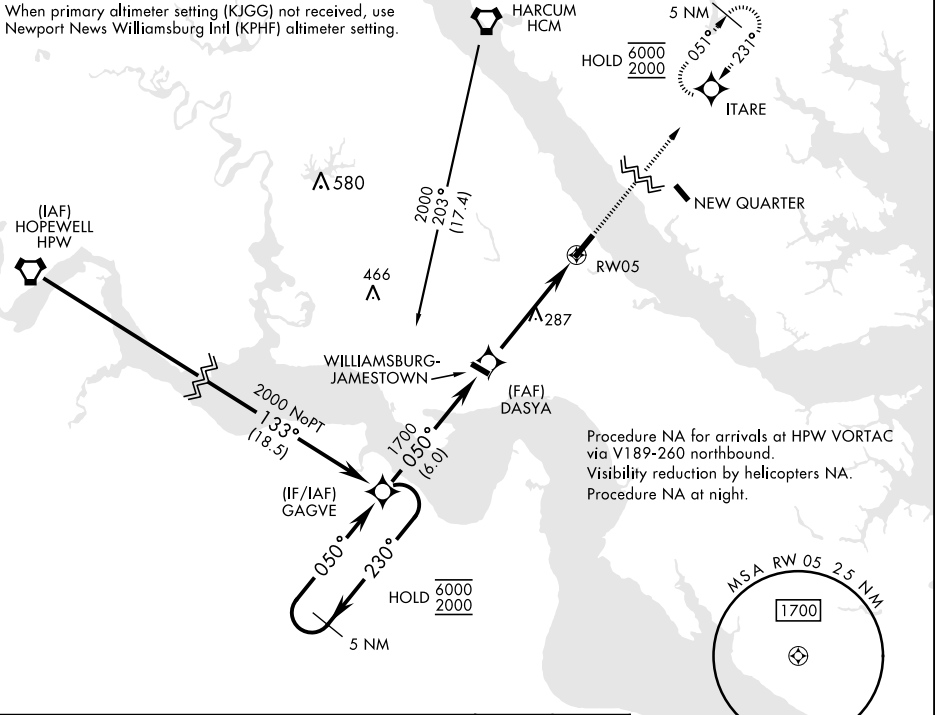
MISSED APPROACH: Climb to 2000 direct ITARE and hold.

▼ Restricted airfield, PPR. Contact Camp Peary Ops prior to landing. Williamsburg Jamestown (KJGG) primary altimeter setting.

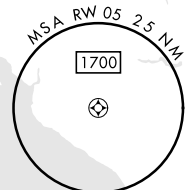
WILLIAMSBURG-JAMESTOWN AWOS-3
120.625

NORFOLK APP CON
125.7 335.625

When primary altimeter setting (KJGG) not received, use Newport News Williamsburg Intl (KPHF) altimeter setting.

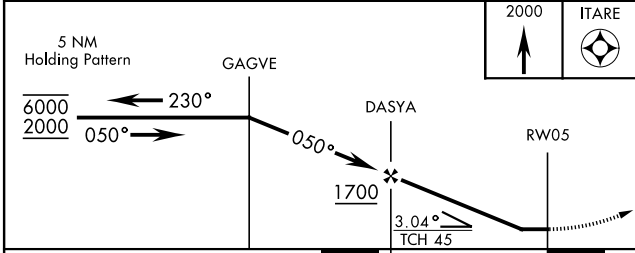


Procedure NA for arrivals at HPW VORTAC via V189-260 northbound. Visibility reduction by helicopters NA. Procedure NA at night.



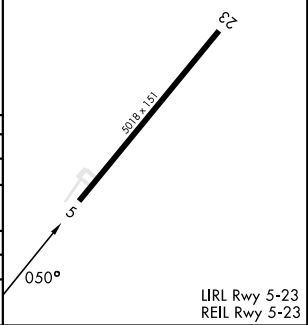
NE-3, 08 AUG 2024 to 05 SEP 2024

NE-3, 08 AUG 2024 to 05 SEP 2024



ELEV 41	TDZE 41
---------	---------

CATEGORY	A	B	C	D
LNAV MDA	600-1	559 (600-1)	600-1 $\frac{5}{8}$	559 (600-1 $\frac{1}{2}$)
CIRCLING	600-1	620-1	620-1 $\frac{5}{8}$	760-2 $\frac{1}{4}$
	559 (600-1)	579 (600-1)	579 (600-1 $\frac{5}{8}$)	719 (800-2 $\frac{1}{4}$)
NEWPORT NEWS / WILLIAMSBURG INTL ALTIMETER SETTING				
LNAV MDA	640-1	599 (600-1)	640-1 $\frac{3}{4}$	599 (600-1 $\frac{3}{4}$)
CIRCLING	640-1	599 (600-1)	640-1 $\frac{3}{4}$	780-2 $\frac{1}{4}$
			599 (600-1 $\frac{3}{4}$)	739 (800-2 $\frac{1}{4}$)



WILLIAMSBURG, VIRGINIA
Amdt 1 02NOV23

37°18'N-76°38'W

CAMP PEARY LNDG STRIP (KW94)

RNAV (GPS) RWY 5

LIRL Rwy 5-23
REIL Rwy 5-23