

LOC I-STX <b>109.5</b>	APP CRS <b>097°</b>	Rwy ldg <b>9003</b> TDZE <b>74</b> Apt Elev <b>74</b>
---------------------------	------------------------	---

# ILS or LOC RWY 10

HENRY E ROHLSEN (STX)(TISX)

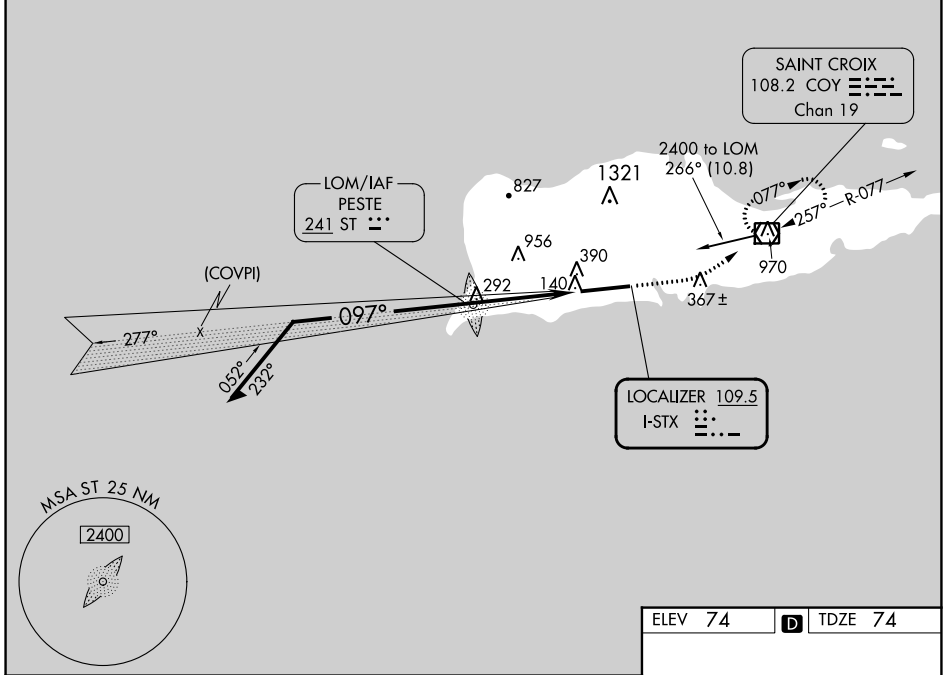
**⚠** Circling NA N of Rwy 10-28. If local altimeter setting not received, procedure NA. For inoperative MALSR, increase S-ILS 10 all Cats visibility to 1.

**MALSR**

**MISSED APPROACH:** Climb to 700 then climbing left turn to 2400 direct COY VOR/DME and hold, continue climb-in-hold to 2400.

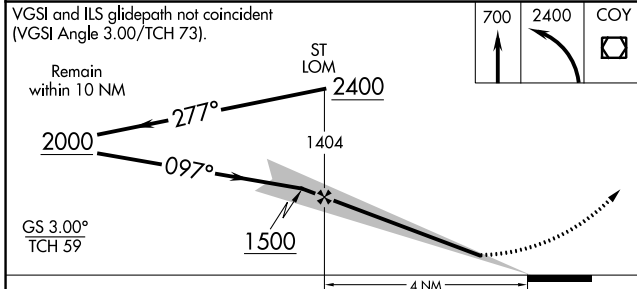
ATIS <b>135.65</b>	SAN JUAN CENTER <b>128.65 279.6</b>	ST. CROIX TOWER ★ <b>118.6 (CTAF) 239.3</b>	GND CON <b>121.7</b>	UNICOM <b>123.0</b>
-----------------------	--	--	-------------------------	------------------------

## ADF REQUIRED



SE-3, 08 AUG 2024 to 05 SEP 2024

SE-3, 08 AUG 2024 to 05 SEP 2024



ELEV 74	<b>D</b> TDZE 74				
700	2400	COY			
REIL Rwy 28 HIRL Rwy 10-28 <b>Ⓛ</b>					
FAF to MAP 4 NM					
Knots	60	90	120	150	180
Min:Sec	4:00	2:40	2:00	1:36	1:20

CATEGORY	A	B	C	D
S-ILS 10	375-½ 301 (400-½)			
S-LOC 10	480-½	406 (500-½)	480-¾	406 (500-¾)
CIRCLING	520-1 446 (500-1)	600-1 526 (600-1)	720-1¾ 646 (700-1¾)	720-2 646 (700-2)