

APP CRS 277°	Rwy Idg 8998
	TDZE 40
	Apt Elev 74

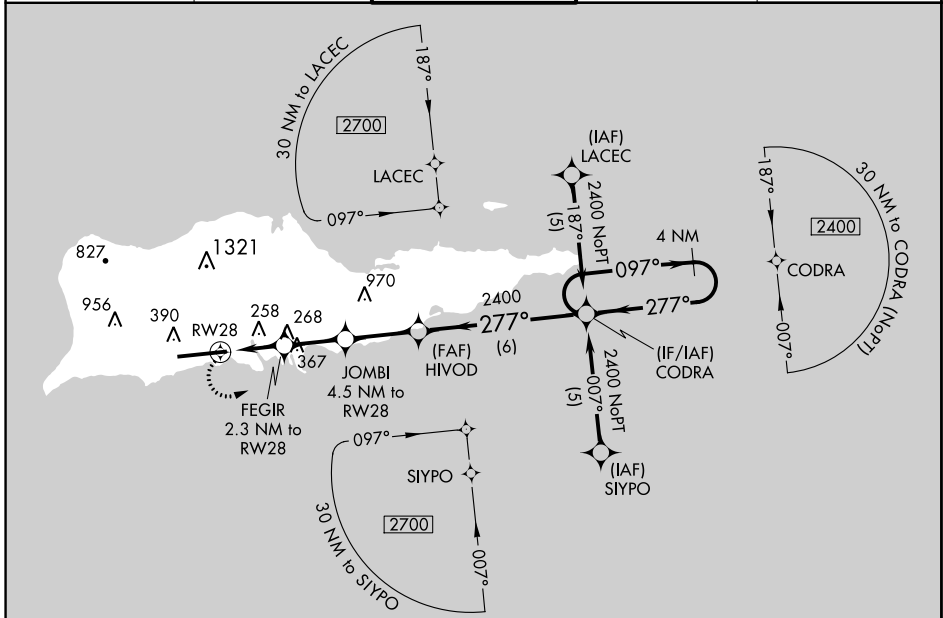
RNAV (GPS) RWY 28

HENRY E ROHLSEN (STX)(TISX)

⚠ Circling NA N of Rwy 10-28. DME/DME RNP-0.3 NA. Visibility reduction by helicopters NA. When local altimeter setting not received, procedure NA.

MISSED APPROACH: Climbing left turn to 2400 direct CODRA and hold.

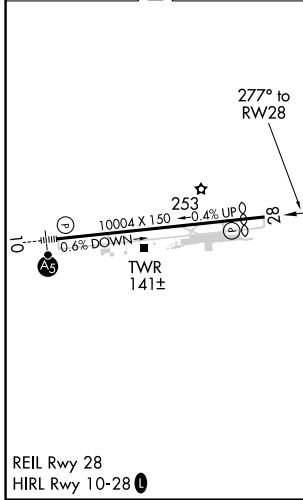
ATIS 135.65	SAN JUAN CENTER 128.65 279.6	ST. CROIX TOWER ★ 118.6(CTAF) 239.3	GND CON 121.7	UNICOM 123.0
-----------------------	----------------------------------------	-----------------------------------------------	-------------------------	------------------------



SE-3. 08 AUG 2024 to 05 SEP 2024

SE-3. 08 AUG 2024 to 05 SEP 2024

ELEV 74	D	TDZE 40
---------	----------	---------



2400	CODRA	JOMBI 4.5 NM to RWY 28	HIVOD	CODRA	4 NM Holding Pattern
2400	277°	FEGR 2.3 NM to RWY 28	277°	2400	097°
1520	800	1.4 NM to RWY 28	2400	277°	2400
3.06°	TCH 55	1.4 NM to RWY 28	2.3 NM to RWY 28	2.2	2.6 NM
VGS1 and descent angles not coincident (VGS1 Angle 3.00/TCH 80).					
CATEGORY	A	B	C	D	
LNAV MDA	560-1	520 (500-1)	560-1½ 520 (500-1½)	560-1¾ 520 (500-1¾)	
CIRCLING	560-1 486 (500-1)	600-1 526 (600-1)	720-1¾ 646 (700-1¾)	720-2 646 (700-2)	