

PIQUA, OHIO

AL-5022 (FAA)

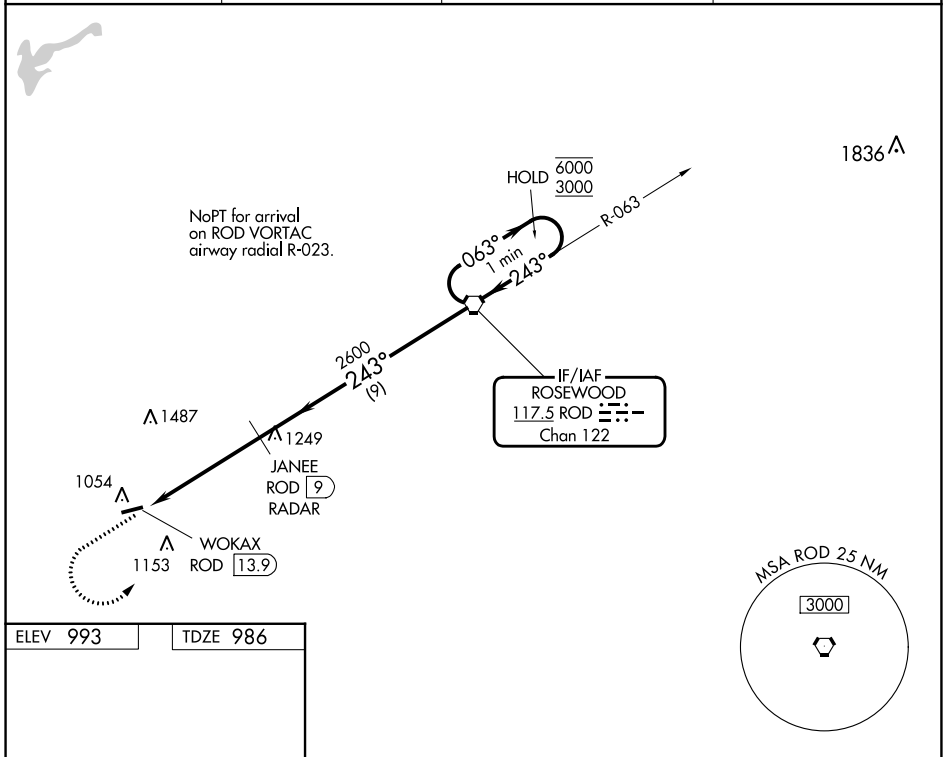
24137

VORTAC ROD <b>117.5</b> Chan <b>122</b>	APP CRS <b>243°</b>	Rwy Idg TDZE Aprt Elev	<b>3998</b> <b>986</b> <b>993</b>
---	------------------------	------------------------------	---

# VOR RWY 26

PIQUA/HARTZELL FLD (I17)

DME or RADAR required.		MISSED APPROACH: Climb to 3000 then left turn direct ROD VORTAC and hold.	
<p>▼ Rwy 26 helicopter visibility reduction below 3/4 SM NA. ▲ NA Use James M Cox Dayton Intl altimeter setting.</p>		DAY ASOS <b>125.8</b>	VES AWOS-3T <b>125.9</b>
		COLUMBUS APP CON <b>134.45 294.5 352.05</b>	UNICOM <b>123.0 (CTAF) 0</b>



ELEV 993	TDZE 986
----------	----------

MRL Rwy 8-26  
REIL Rws 8 and 26

FAF to MAP 4.9 NM					
Knots	60	90	120	150	180
Min:Sec	4:54	3:16	2:27	1:58	1:38

3000 ↑ ROD

WOKAX ROD (13.9)

JANEE ROD (9) RADAR

2600

4.9 NM

9 NM

ROD VORTAC One Minute Holding Pattern

063° → 6000  
← 243° 3000

CATEGORY	A	B	C	D
S-26	1500-1	514 (600-1)	1500-1 3/8	514 (600-1 3/8)
<input checked="" type="checkbox"/> CIRCLING	1500-1 507 (600-1)	1560-1 567 (600-1)	1560-1 1/2 567 (600-1 1/2)	1880-3 887 (900-3)

EC-2, 08 AUG 2024 to 05 SEP 2024

EC-2, 08 AUG 2024 to 05 SEP 2024

PIQUA, OHIO

Amdt 6E 20JUN19

40°10'N-84°19'W

PIQUA/HARTZELL FLD (I17)  
**VOR RWY 26**