

APP CRS	Rwy ldg	<b>3975</b>
<b>289°</b>	TDZE	<b>118</b>
	Apt Elev	<b>118</b>

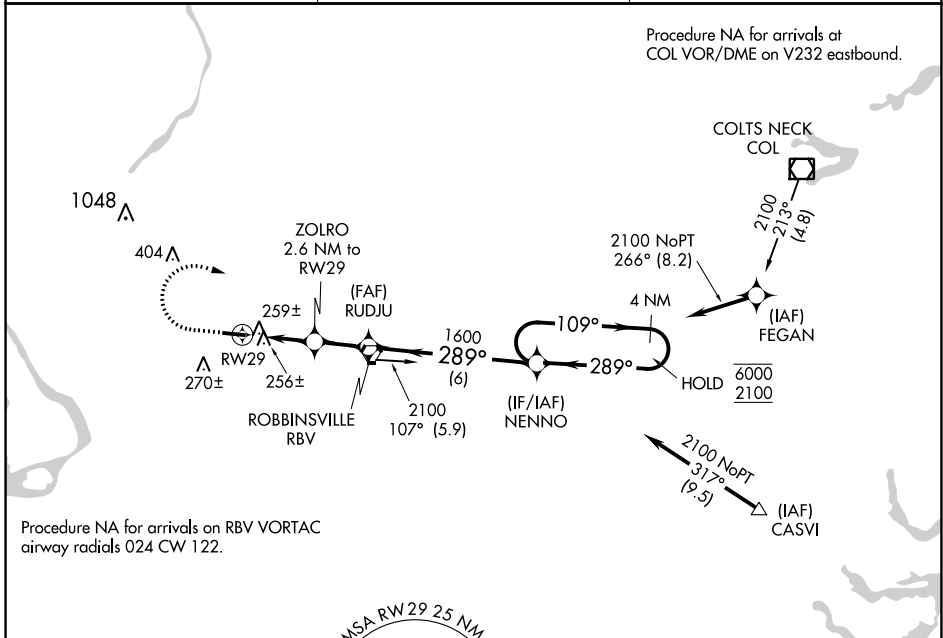
# RNAV (GPS) RWY 29

TRENTON-ROBBINSVILLE (N87)

RNP APCH. Procedure NA at night. Rwy 29 helicopter visibility reduction below 1 SM NA. Use Wrightstown altimeter setting.

MISSED APPROACH: Climb to 1000, then climbing right turn to 2100 direct NENNO and hold.

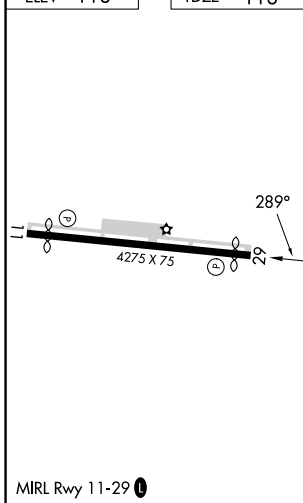
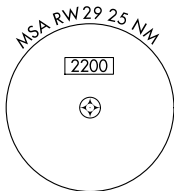
MC GUIRE APP CON <b>126.475 363.8</b>	UNICOM <b>123.0 (CTAF)</b>	<b>123.3 0</b>
--	-------------------------------	----------------



NE-2, 08 AUG 2024 to 05 SEP 2024

NE-2, 08 AUG 2024 to 05 SEP 2024

ELEV 118 TDZE 118



1000	2100	NENNO	Visual Segment - Obstacles.	
			RUDJU	NENNO 4 NM Holding Pattern
			ZOLRO 2.6 NM to RWY 29	109° → 6000
			RWY 29	← 289° 2100
			980	1600
			2.6 NM	1.9 NM
			6 NM	
CATEGORY	A	B	C	D
LNAV MDA	540-1	422 (500-1)	540-1½	422 (500-1½)
CIRCLING	680-1	562 (600-1)	680-1½	760-2
			562 (600-1½)	642 (700-2)