

VORTAC PXV 113.3 Chan 80	APP CRS 150°	Rwy Idg TDZE Apt Elev	N/A N/A 387
--	------------------------	-----------------------------	--

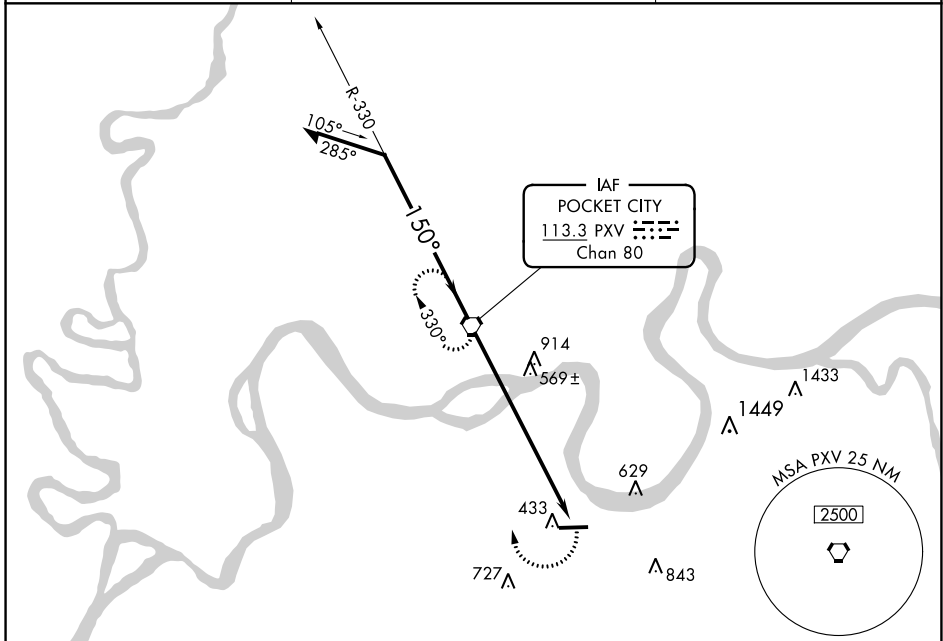
VOR-A

HENDERSON CITY-COUNTY (EHR)

NA When local altimeter setting not received, use Evansville altimeter setting and increase all MDAs 80 feet, and increase Circling Cats C/D visibility ¼ SM.

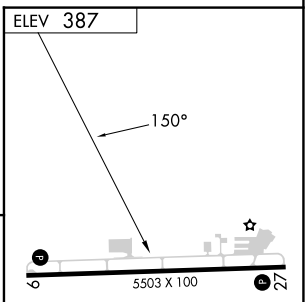
MISSED APPROACH: Climbing right turn to 2100 direct PXV VORTAC and hold.

AWOS-3PT 118.85	EVANSVILLE APP CON ★ 124.025 257.8	UNICOM 122.8 (CTAF) 0
---------------------------	--	--



SE-1, 08 AUG 2024 to 05 SEP 2024

SE-1, 08 AUG 2024 to 05 SEP 2024



REIL Rwys 9 and 27 **0**
MIRL Rwy 9-27 **0**

CATEGORY	A		B		C		D		FAF to MAP 7.9 NM					
	920-1	533 (600-1)	1040-1¾	653 (700-1¾)	1200-2¾	813 (900-2¾)	Knots	60	90	120	150	180		
CIRCLING									Min:Seq	7:54	5:16	3:57	3:10	2:38