

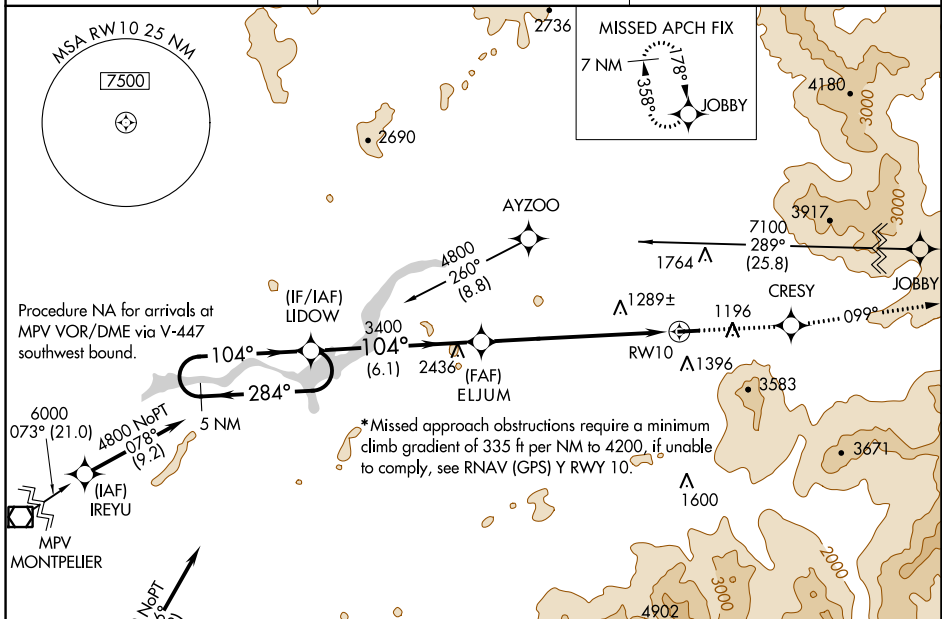
WAAS CH <b>53512</b> <b>W10A</b>	APP CRS <b>104°</b>	Rwy Idg TDZE Apt Elev	<b>4001</b> <b>1057</b> <b>1074</b>
--	------------------------	-----------------------------	---

# RNAV (GPS) Z RWY 10

MOUNT WASHINGTON RGNL (HIE)

<p><b>▼</b> DME/DME RNP-0.3 NA. Visibility reduction by helicopters NA. When local altimeter setting not received, use Lyndonville altimeter setting and increase DA 71 feet and LPV all Cals visibility 1/2 mile.</p> <p><b>▲</b> MISSED APPROACH: Climb to 7100 direct CRESY and via track 099° to JOBBY and hold, continue climb-in-hold to 7100.</p>
--

ASOS <b>118.525</b>	BOSTON CENTER <b>135.7 282.2</b>	UNICOM <b>122.8 (CTAF) ①</b>
------------------------	-------------------------------------	---------------------------------



NE-1, 08 AUG 2024 to 05 SEP 2024

NE-1, 08 AUG 2024 to 05 SEP 2024



<p>4800 ← 284°</p> <p>104° →</p> <p>3400</p> <p>ELJUM</p> <p>3400</p> <p>RW10</p> <p>6.1 NM</p> <p>7.1 NM</p>	<p>7100 CRESY</p> <p>↑</p> <p>JOBBY</p> <p>099°</p>			
CATEGORY	A	B	C	D
*LPV DA	1507-1 1/2 450 (500-1 1/2)			NA

REIL Rwy 10 and 28 ①	MIRL Rwy 10-28 ①
----------------------	------------------