

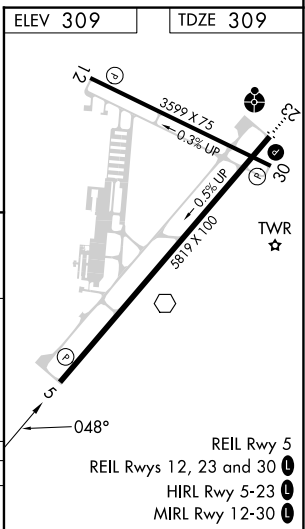
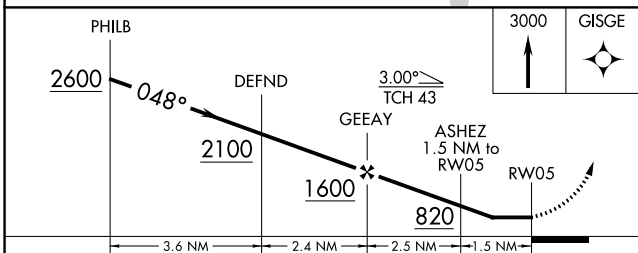
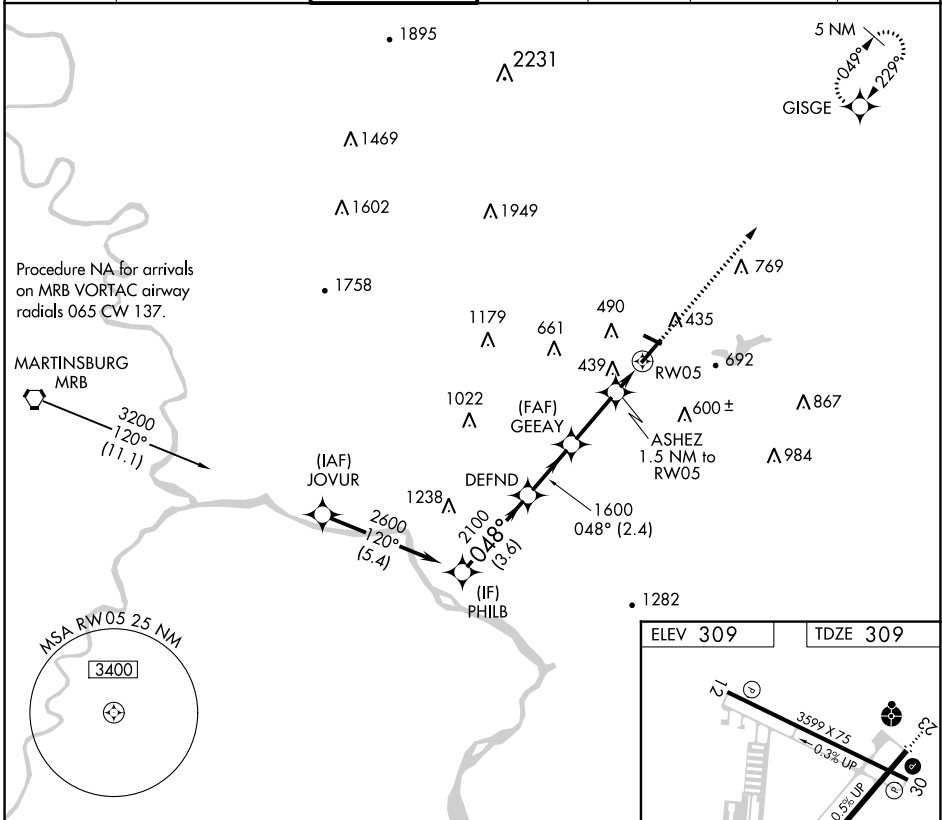
APP CRS	Rwy ldg	5819
048°	TDZE	309
	Apt Elev	309

RNAV (GPS) RWY 5

FREDERICK MUNI (F'DK)

RNP APCH - GPS.		MISSED APPROACH: Climb to 3000 direct GISGE and hold, continue climb-in-hold to 3000.			
Rwy 5 helicopter visibility reduction below 3/4 SM NA.					

ATIS 124.875	POTOMAC APP CON 126.1 338.25	FREDERICK TOWER ★ 132.4 (CTAF)	GND CON 127.425	CLNC DEL 127.425	CLNC DEL 126.9 (When twr closed)	UNICOM 122.95
------------------------	--	--	---------------------------	----------------------------	---	-------------------------



CATEGORY	A	B	C	D
LNAV MDA	700-1	391 (400-1)	700-1 1/8	391 (400-1 1/8)

NE-3, 08 AUG 2024 to 05 SEP 2024

NE-3, 08 AUG 2024 to 05 SEP 2024