

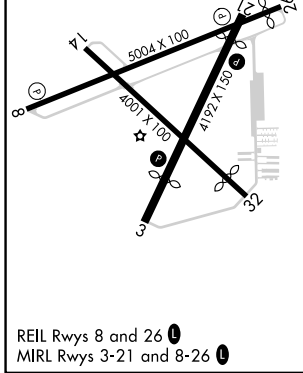
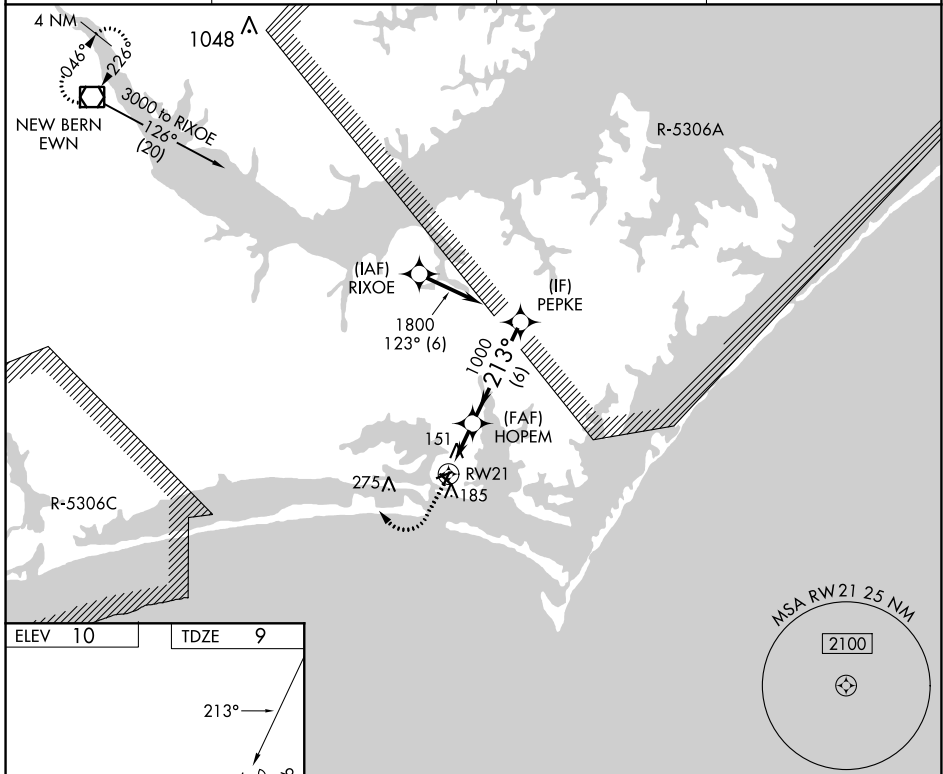
APP CRS 213°	Rwy Idg TDZE Apt Elev	3676 9 10
------------------------	-----------------------------	--------------------------------------

RNAV (GPS) RWY 21

MICHAEL J SMITH FLD (MR.H)

RNP APCH - GPS.		MISSED APPROACH: Climb to 500 then climbing right turn to 3000 direct EWN VOR/DME and hold.
<p>⚠ Circling Rwy 8, 14, 32 NA at night. Rwy 21 helicopter visibility reduction below 3/4 SM NA. ATC clearance required to penetrate R-5306A and R-5306C.</p>		

ASOS 135,375	CHERRY POINT APP CON 132,575 299.6	CLNC DEL 125,65	UNICOM 122.8 (CTAF) 0
------------------------	--	---------------------------	---------------------------------



500	3000	EWN	VGSI and descent angles not coincident (VGSI Angle 4.00/TCH 54).	
↑	↷	◻		
<p>HOPEM</p> <p>0.8 NM to RW21</p> <p>3.00° TCH 40</p> <p>1000</p> <p>213°</p> <p>1800</p>		PEPKE		
<p>0.8</p> <p>2.2 NM</p> <p>6 NM</p>				
CATEGORY	A	B	C	D
LNAV MDA	420-1	411 (500-1)		NA
CIRCLING	540-1	530 (600-1)		NA

SE-2, 08 AUG 2024 to 05 SEP 2024

SE-2, 08 AUG 2024 to 05 SEP 2024