

WAAS CH 69227 W32A	APP CRS 321°	Rwy Idg TDZE Apt Elev	3511 10 10
--	------------------------	-----------------------------	---------------------------------------

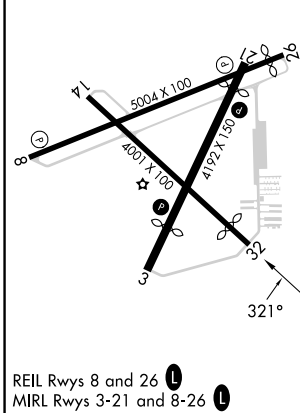
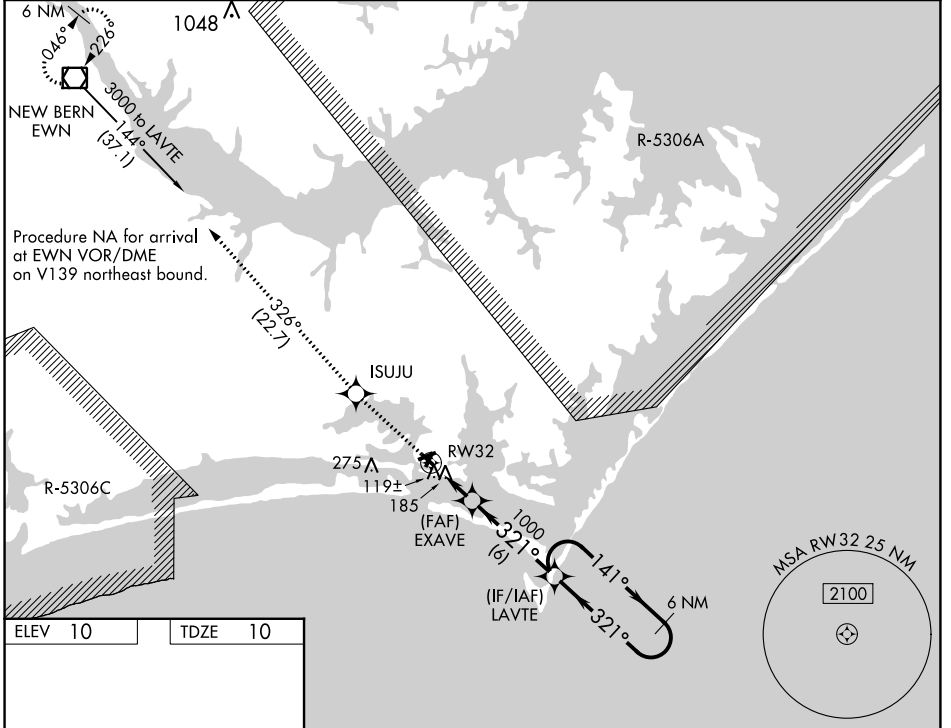
RNAV (GPS) RWY 32

MICHAEL J SMITH FLD (MRH)

⚠ DME/DME RNP-0.3 NA. ATC clearance required to penetrate R-5306A and R-5306C. When local altimeter setting not received, use Cherry Point MCAS (Cunningham Fld) altimeter setting and increase all MDA 40 feet; increase LP Cats C and D visibility 1/8 mile. Straight-in Rwy 32 NA at night, Circling Rwy 8, 14, 32 NA at night. Rwy 8, 14, 32 helicopter visibility reduction below 1 SM NA.

⚠ MISSED APPROACH: Climb to 3000 direct ISUJU and on track 326° to EWN VOR/DME and hold.

ASOS 135.375	CHERRY POINT APP CON 132.575 299.6	CLNC DEL 125.65	UNICOM 122.8 (CTAF) 0
------------------------	--	---------------------------	---------------------------------



3000	ISUJU	tr 326°	EWN	LAVTE	6 NM Holding Pattern
↑	✧		◻		
RW32		EXAVE	3.00° TCH 40	1000	141° → 2300
← 321°					← 321°
3 NM		6 NM			
CATEGORY	A	B	C	D	
LP MDA	380-1 370 (400-1)				
LNAV MDA	460-1	450 (500-1)	460-1 3/8	450 (500-1 3/8)	
CIRCLING	540-1	530 (600-1)	580-1 1/2	570 (600-1 1/2)	580-2
				570 (600-2)	

SE-2, 08 AUG 2024 to 05 SEP 2024

SE-2, 08 AUG 2024 to 05 SEP 2024